

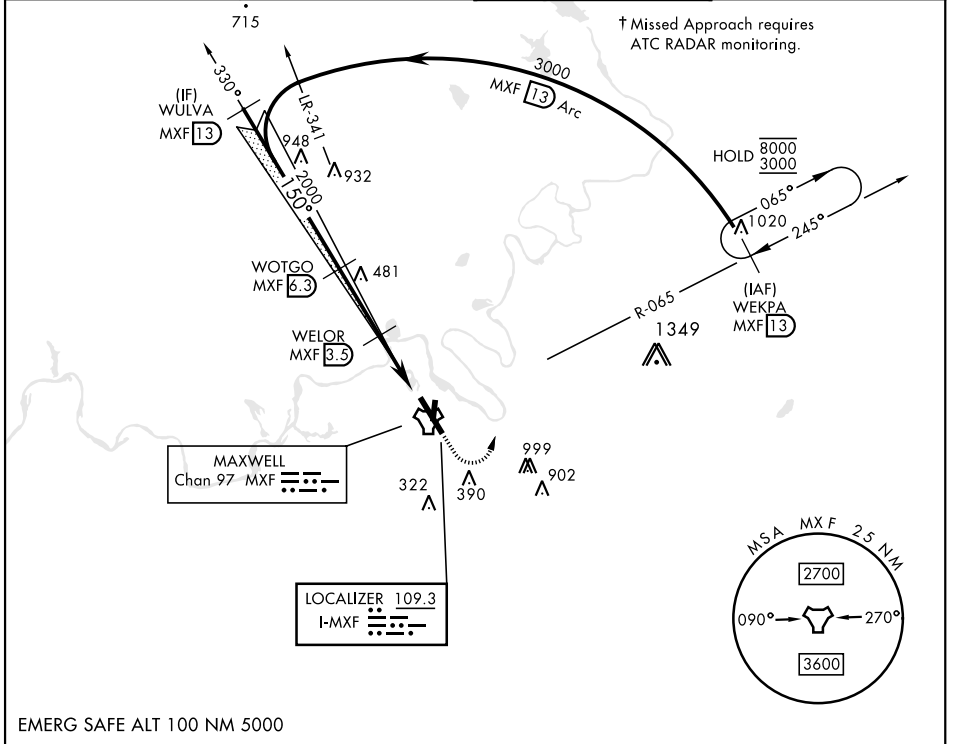
I LS or LOC/DME RWY 15

LOC I-MXF 109.3	APCH CRS 150°	Rwy Idg TDZE Arprt Elev 8008 171 171	AL-274 [USAF]	MAXWELL AFB (KMXF)
---------------------------	-------------------------	--	---------------	--------------------

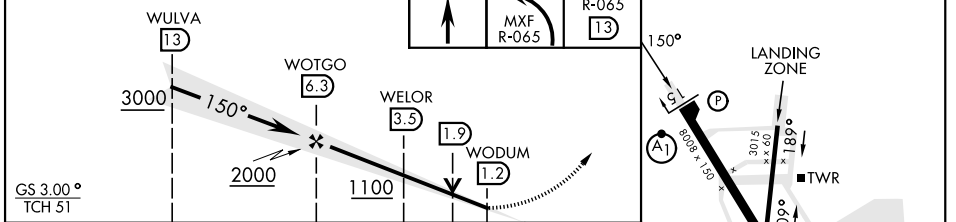
▼ **** When ALS inop, increase RVR to 40 and vis to ¾ mile.**
**** When ALS inop, increase CAT AB RVR to 55 and vis to 1 mile, CAT CDE vis to 1¼ mile.**
***** Circling not authorized E of Rwy 15-33.**

ALSF-1 **† MISSED APPROACH: Climb to 1000, then climbing left turn to 3000 to intercept MXF TACAN R-065 outbound to 13 DME (WEKPA) and hold.**

ATIS ★ 134.7 269.9	MONTGOMERY APP CON 121.2 269.05 (N) 124.0 363.025 (S)	TOWER ★ 118.15 253.5	GND CON 127.15 289.4
------------------------------	---	--------------------------------	--------------------------------



EMERG SAFE ALT 100 NM 5000	ELEV 171	TDZE 171
----------------------------	----------	----------



CATEGORY	A	B	C	D	E
S-ILS 15 *	371/24		200	(200-½)	
S-LOC 15 **	600/24	429 (500-½)	600/40	429	(500-¾)
*** CIRCLING	680-1	509 (600-1)	720-1½ 549 (600-1½)	920-2½ 749 (800-2½)	NA

HIRL Rwy 15-33

I LS or LOC/DME RWY 15

SE-4, 11 JUL 2024 to 08 AUG 2024

SE-4, 11 JUL 2024 to 08 AUG 2024