

APP CRS	Rwy Idg	<b>5008</b>
<b>062°</b>	TDZE	<b>21</b>
	Apt Elev	<b>36</b>

# RNAV (GPS) RWY 6

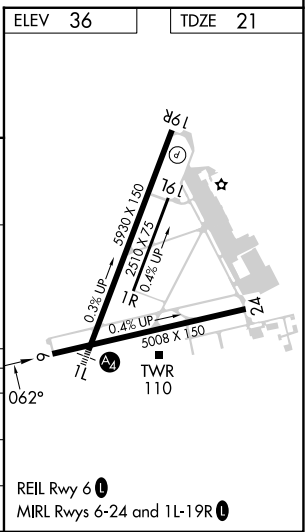
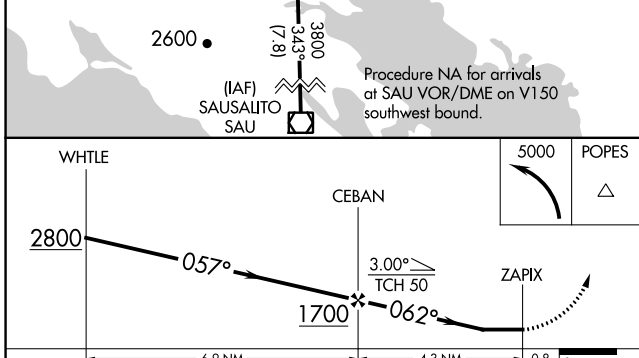
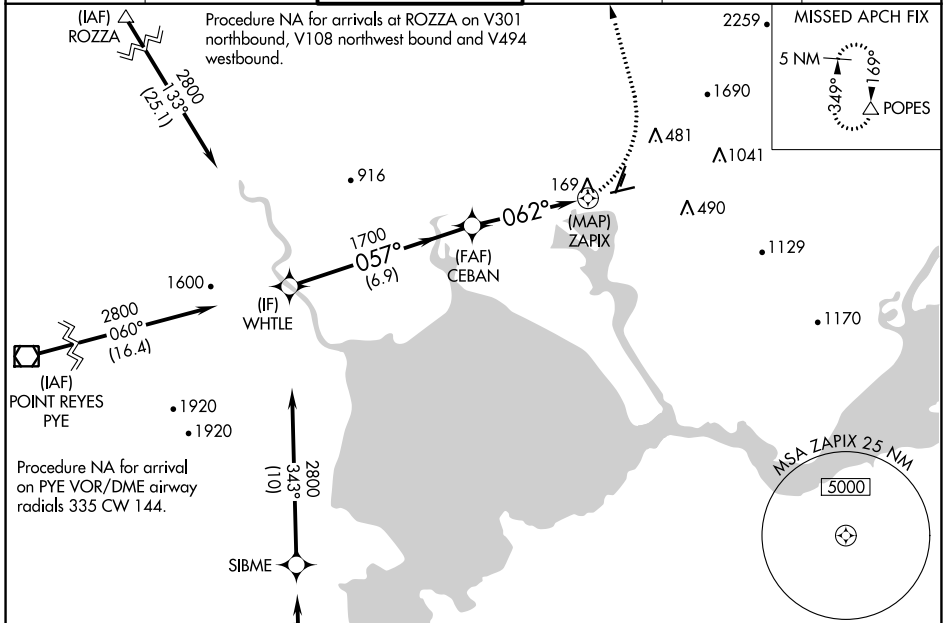
NAPA COUNTY (APC)

RNP APCH-GPS.

**▼** Rwy 6 helicopter visibility reduction below 3/4 SM NA.  
**▲** Circling Cats A/B/C NA east of Rwy 19R and northwest of Rwy 24. Circling Cat D NA east of Rwy 19L-1R.

MISSED APPROACH: Climbing left turn to 5000 direct POPES and hold, continue climb-in-hold to 5000.  
 \*Missed approach requires minimum climb of 410 feet per NM to 2200.

ATIS <b>124.05</b>	OAKLAND CENTER <b>127.8 353.5</b>	NAPA TOWER * <b>118.7 (CTAF) 257.8</b>	GND CON <b>121.7</b>	CLNC DEL <b>127.85</b>	UNICOM <b>122.95</b>
-----------------------	--------------------------------------	---	-------------------------	---------------------------	-------------------------



CATEGORY	A	B	C	D
LNAV MDA*	480-1	459 (500-1)	480-1 3/8	459 (500-1 3/8)
LNAV MDA	1340-1 1/4 1319 (1400-1 1/4)	1340-1 1/2 1319 (1400-1 1/2)	1340-3	1319 (1400-3)
<b>C</b> CIRCLING	1340-1 1/4 1304 (1400-1 1/4)	1340-1 1/2 1304 (1400-1 1/2)	1340-3	1304 (1400-3)

SW-2, 11 JUL 2024 to 08 AUG 2024

SW-2, 11 JUL 2024 to 08 AUG 2024