

VORTAC SGD 112.1 Chan 58	APP CRS 050°	Rwy Idg TDZE 21 Apt Elev 36	5008
---------------------------------------	------------------------	---	-------------

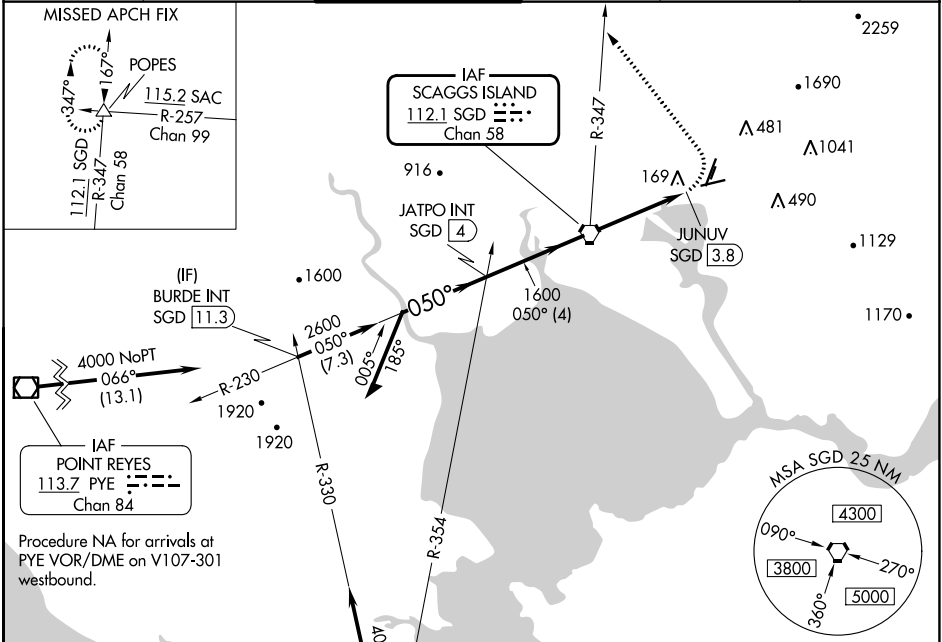
VOR RWY 6

NAPA COUNTY (APC)

⚠ Rwy 6 helicopter visibility reduction below ¼ SM NA.
Circling Cats A/B/C NA east of Rwy 19R and northwest of Rwy 24. Circling Cat D NA east of Rwy 19L-1R.

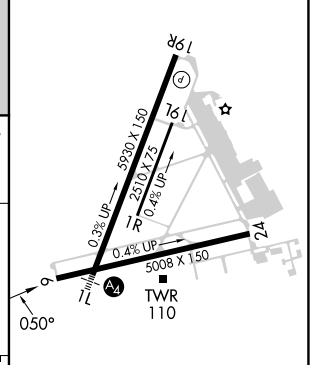
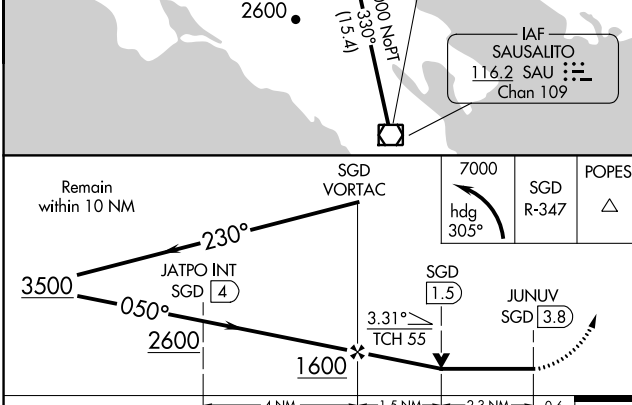
MISSED APPROACH: Climbing left turn to 7000 on heading 305° and SGD VORTAC R-347 to POPES INT and hold, continue climb-in-hold to 7000.

ATIS 124.05	OAKLAND CENTER 127.8 353.5	NAPA TOWER ★ 118.7 (CTAF) 257.8	GND CON 121.7	CLNC DEL 127.85	UNICOM 122.95
-----------------------	--------------------------------------	--	-------------------------	---------------------------	-------------------------



Procedure NA for arrivals at PYE VOR/DME on V107-301 westbound.

ELEV 36	TDZE 21
---------	---------



CATEGORY	A	B	C	D
S-6	1080-1¼ 1059 (1100-1¼)	1080-1½ 1059 (1100-1½)	1080-3 1059 (1100-3)	
C CIRCLING	1080-1¼ 1044 (1100-1¼)	1080-1½ 1044 (1100-1½)	1280-3 1244 (1300-3)	1300-3 1264 (1300-3)

Knots	60	90	120	150	180
Min:Sec	3:48	2:32	1:54	1:31	1:16

SW-2, 11 JUL 2024 to 08 AUG 2024

SW-2, 11 JUL 2024 to 08 AUG 2024