

(OAK.VNYRD1) 24193

AL-281 (FAA)

# VNYRD ONE ARRIVAL (RNAV) Arrival Routes

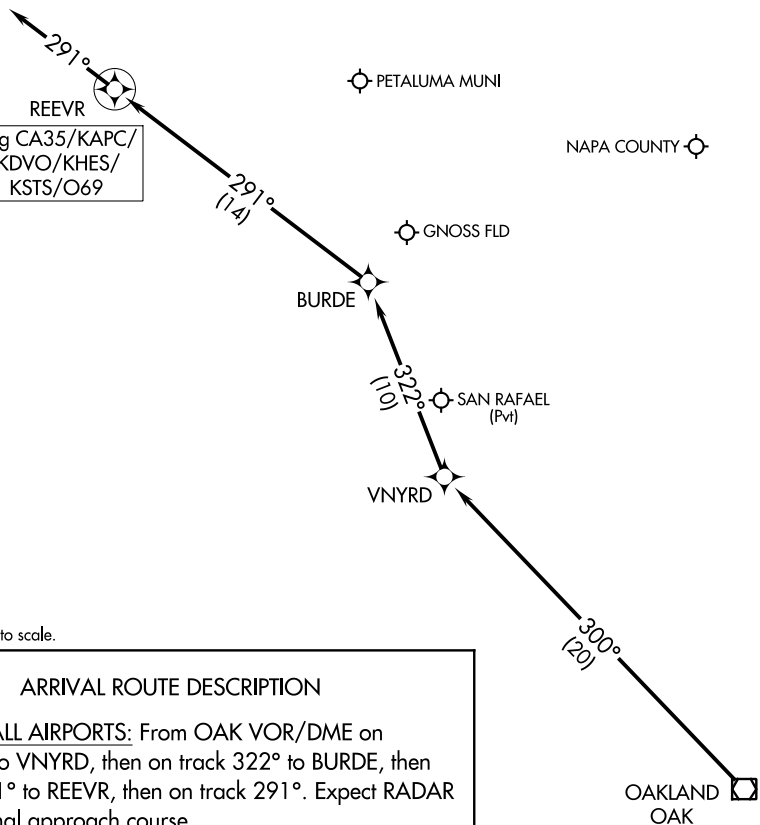
NAPA, CALIFORNIA

HEALDSBURG  
MUNI

RNAV 1 - DME/DME/IRU or GPS.  
RADAR required.

OAKLAND CENTER  
127.8 353.5  
APC ATIS  
124.05  
STS ATIS  
120.55  
APC GND CON  
121.7  
STS GND CON  
121.9  
NAPA TOWER ★  
118.7 257.8  
SANTA ROSA TOWER ★  
118.5 363.0

CHARLES M SCHULZ-  
SONOMA COUNTY



Ldg CA35/KAPC/  
KDVO/KHES/  
KSTS/O69

NOTE: Chart not to scale.

### ARRIVAL ROUTE DESCRIPTION

LANDING ALL AIRPORTS: From OAK VOR/DME on track 300° to VNYRD, then on track 322° to BURDE, then on track 291° to REEVR, then on track 291°. Expect RADAR vectors to final approach course.

# VNYRD ONE ARRIVAL (RNAV) Arrival Routes

NAPA, CALIFORNIA

(OAK.VNYRD1) 11JUL24

SW-2, 11 JUL 2024 to 08 AUG 2024

SW-2, 11 JUL 2024 to 08 AUG 2024