

# ILS RWY 2R (CAT II & III) NASHVILLE INTL (BNA)

LOC/DME I-UQU <b>111.75</b> Chan <b>54 (Y)</b>	APP CRS <b>021°</b>	Rwy Idg TDZE Apt Elev	<b>8000</b> <b>590</b> <b>599</b>
--	------------------------	-----------------------------	---

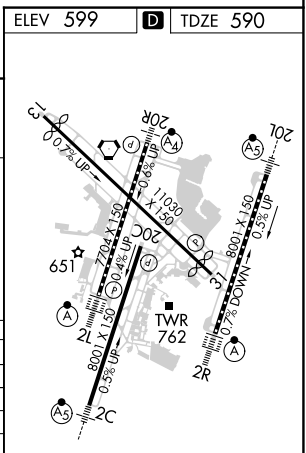
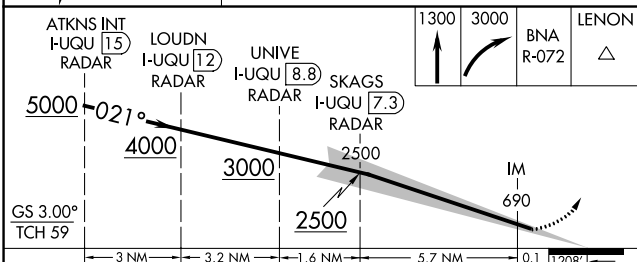
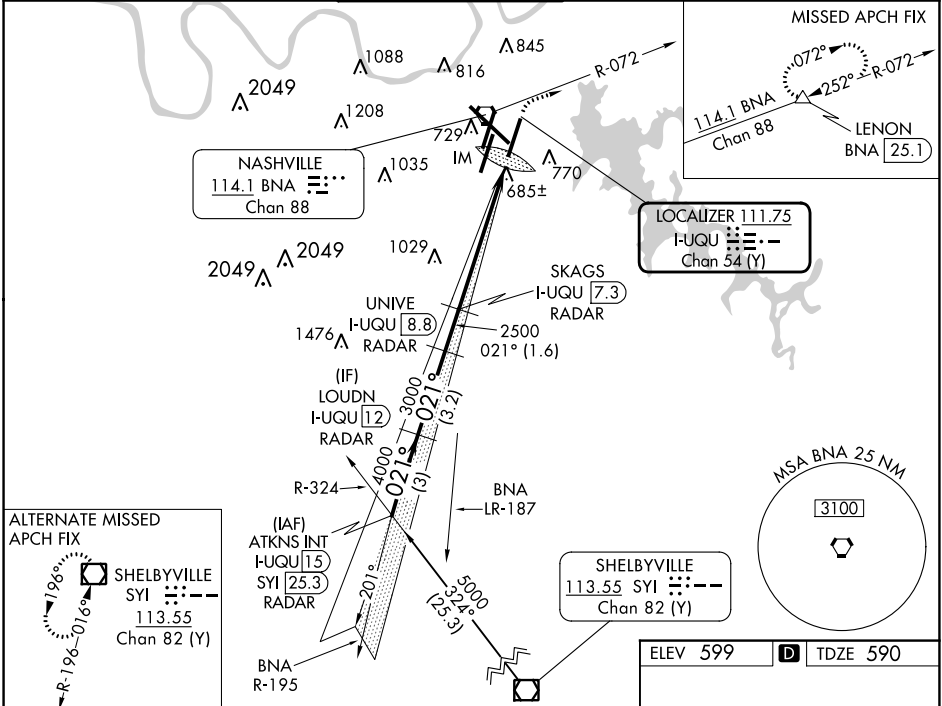
DME required.

**Simultaneous approach authorized with Rwy 2L/C.**

ALSF-2

**MISSED APPROACH:** Climb to 1300 then climbing right turn to 3000 on BNA R-072 to LENON/BNA 25.1 DME and hold.

D-ATIS <b>135.1</b>	NASHVILLE APP CON <b>118.4 360.7</b>	NASHVILLE TOWER <b>118.6 257.8</b>	GND CON <b>121.9 348.6</b>	CLNC DEL <b>126.05</b>	CPDLC
------------------------	---	---------------------------------------	-------------------------------	---------------------------	-------



CATEGORY	A	B	C	D
S-ILS 2R		CAT II	RA 116/12	100 DA 690
S-ILS 2R		CAT IIIa	RVR 07	
S-ILS 2R		CAT IIIb	RVR 06	
S-ILS 2R		CAT IIIc	NA	

**CATEGORY II & III ILS - SPECIAL AIRCREW & AIRCRAFT CERTIFICATION REQUIRED**

HIRL all Rwys  
TDZ/CL Rwys 2L and 2R  
REIL Rwys 13, 20C, and 31

SE-1, 11 JUL 2024 to 08 AUG 2024

SE-1, 11 JUL 2024 to 08 AUG 2024