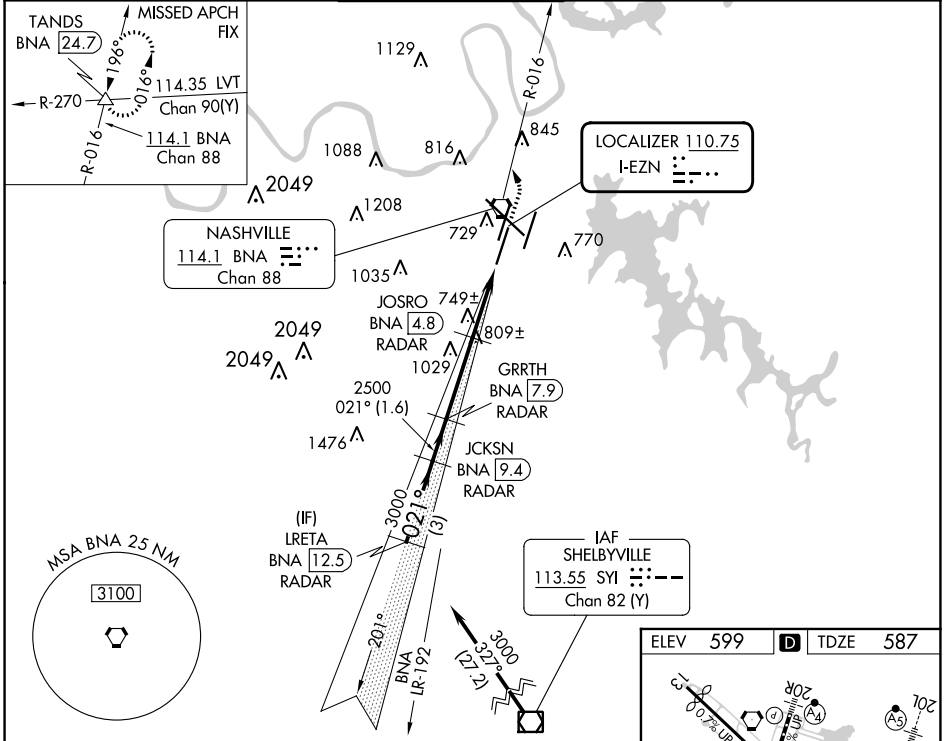


LOC I-EZN <b>110.75</b>	APP CRS <b>021°</b>	Rwy Idg 7601
		TDZE 587
		Apt Elev 599

# ILS or LOC RWY 2C

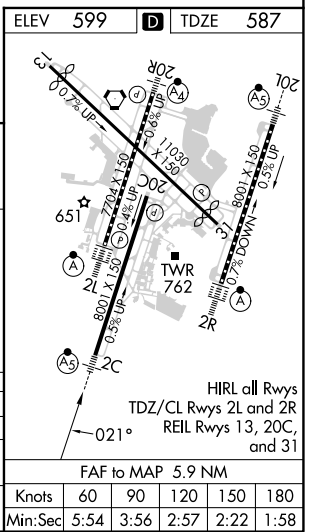
NASHVILLE INTL (BNA)

DME or RADAR required.		MALSR	MISSED APPROACH: Climb to 1300 then climbing left turn to 4000 on BNA VORTAC R-016 to TANDS INT/BNA 24.7 and hold.		
▼ Simultaneous approach authorized. For inop ALS, increase S-LOC 2C Cats C and D visibility to RVR 6000. DME from BNA VORTAC. ▲ Simultaneous reception of I-EZN and BNA DME required. # RVR 1800 authorized with the use of FD or AP or HUD to DA.					
D-ATIS <b>135.1</b>	NASHVILLE APP CON <b>118.4 360.7</b>	NASHVILLE TOWER <b>118.6 257.8</b>	GND CON <b>121.9 348.6</b>	CLNC DEL <b>126.05</b>	CPDLC



VGSI and ILS glidepath not coincident.

	1300	4000	BNA R-016	TANDS
	↑	↩		△
	*LOC only.			
IRETA BNA 12.5 RADAR	JCKSN BNA 9.4 RADAR	GRRTH BNA 7.9 RADAR	JOSRO BNA 4.8 RADAR	BNA 2
3000	2500	1520		
GS 3.00° TCH 60				
3 NM	1.6 NM	3.1 NM	1.6 NM	1.2 NM
CATEGORY	A	B	C	D
S-ILS 2C #	787/24		200 (200-1/2)	
S-LOC 2C	1000/24	413 (500-1/2)	1000/40	413 (500-3/4)
CIRCLING	1100-1 501 (600-1)	1120-1 521 (600-1)	1200-1 3/4 601 (700-1 3/4)	1380-2 1/2 781 (800-2 1/2)



SE-1, 11 JUL 2024 to 08 AUG 2024

SE-1, 11 JUL 2024 to 08 AUG 2024