

APP CRS Rwy Idg **9487**  
 136° TDZE **567**  
 Apt Elev **599**

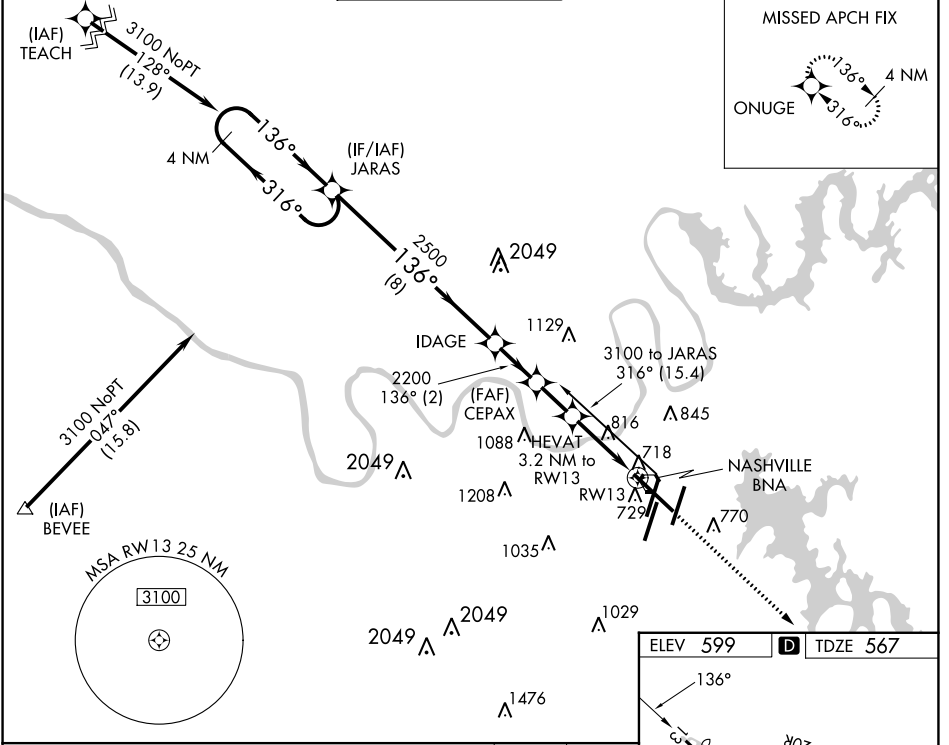
# RNAV (GPS) RWY 13

NASHVILLE INTL (BNA)

RNP APCH:  
 ▼ For uncompensated Baro-VNAV systems, LNAV/VNAV  
 ▲ NA below -16°C or above 47°C.

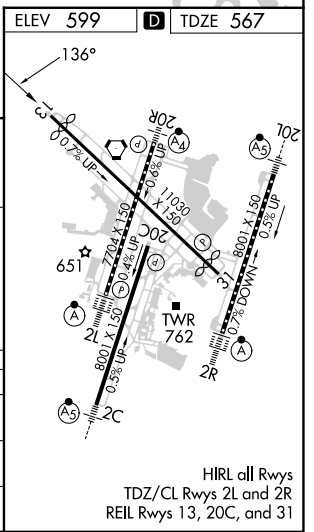
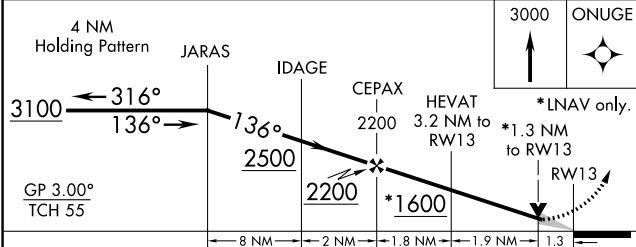
MISSED APPROACH: Climb to 3000 direct ONUGE and hold.

D-ATIS <b>135.1</b>	NASHVILLE APP CON <b>118.4 360.7</b>	NASHVILLE TOWER <b>118.6 257.8</b>	GND CON <b>121.9 348.6</b>	CLNC DEL <b>126.05</b>	CPDLC
------------------------	---	---------------------------------------	-------------------------------	---------------------------	-------



SE-1, 11 JUL 2024 to 08 AUG 2024

SE-1, 11 JUL 2024 to 08 AUG 2024



CATEGORY	A	B	C	D
LNAV/ VNAV	968-1½ 401 (400-1½)			
LNAV MDA	1080-1	513 (500-1)	1080-1½ 513 (500-1½)	1080-1¾ 513 (500-1¾)
Ⓢ CIRCLING	1100-1 501 (600-1)	1120-1 521 (600-1)	1200-1¾ 601 (700-1¾)	1380-2½ 781 (800-2½)

HIRL all Rwys  
 TDZ/CL Rwys 2L and 2R  
 REIL Rwys 13, 20C, and 31