

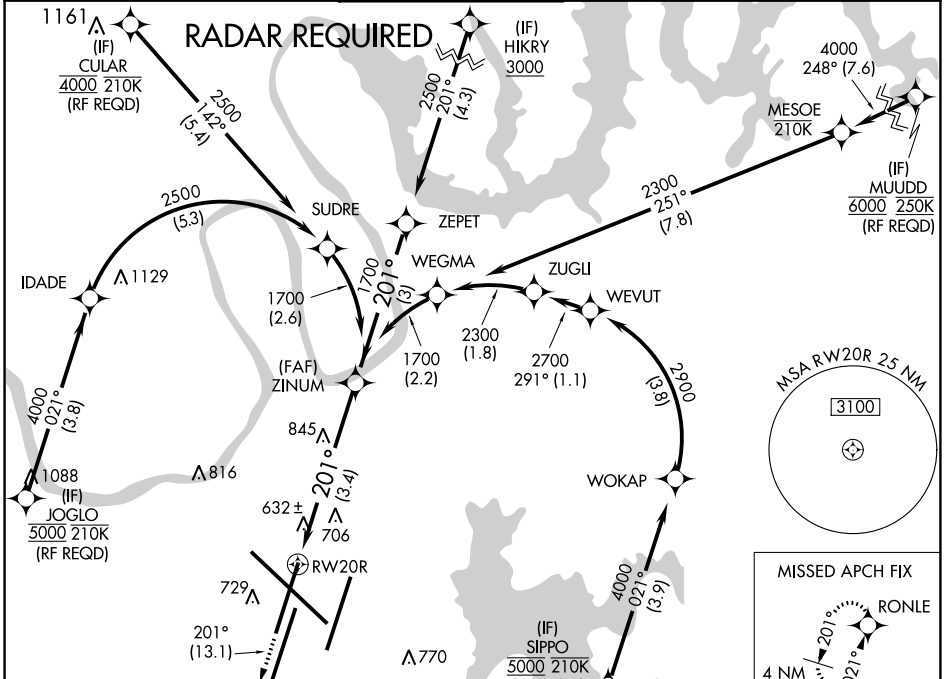
APP CRS	Rwy Idg	7702
201°	TDZE	578
	Apt Elev	599

RNAV (RNP) Z RWY 20R

NASHVILLE INTL (BNA)

<p>GPS required. Simultaneous approach authorized with Rwy 20L. Use of FD or AP providing RNAV track guidance required during simultaneous operations. For uncompensated Baro-VNAV systems, procedure NA below -11°C (13°F) or above 54°C (130°F). For inoperative MALSF, increase RNP 0.18 all Cats visibility to RVR 5600 and RNP 0.30 all Cats visibility to 1½.</p>	<p>MALSF</p>	<p>MISSED APPROACH: Climb to 3000 on track 201° to RONLE and hold.</p>

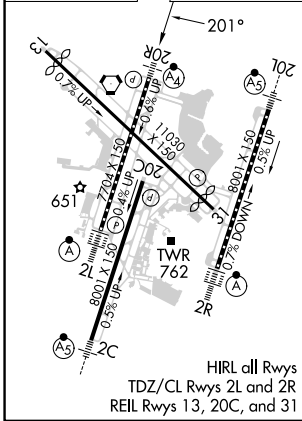
D-ATIS 135.1	NASHVILLE APP CON 118.4 360.7	NASHVILLE TOWER 118.6 257.8	GND CON 121.9 348.6	CLNC DEL 126.05	CPDLC
------------------------	---	---------------------------------------	-------------------------------	---------------------------	-------



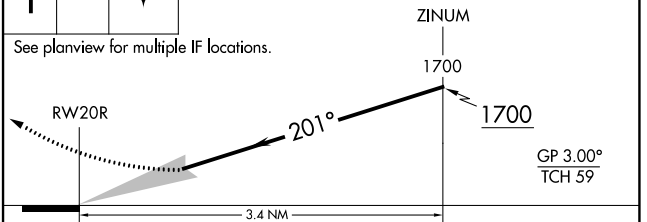
SE-1, 11 JUL 2024 to 08 AUG 2024

SE-1, 11 JUL 2024 to 08 AUG 2024

ELEV 599	D	TDZE 578
----------	----------	----------



3000	tr 201°	RONLE	VGSI and RNAV glidepath not coincident (VGSI Angle 3.00/TCH 79).
------	---------	-------	--



CATEGORY	A	B	C	D
RNP 0.18 DA		927/42	349 (400-7/8)	
RNP 0.30 DA		1042/60	464 (500-1¼)	

AUTHORIZATION REQUIRED