

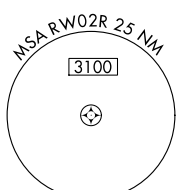
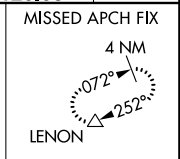
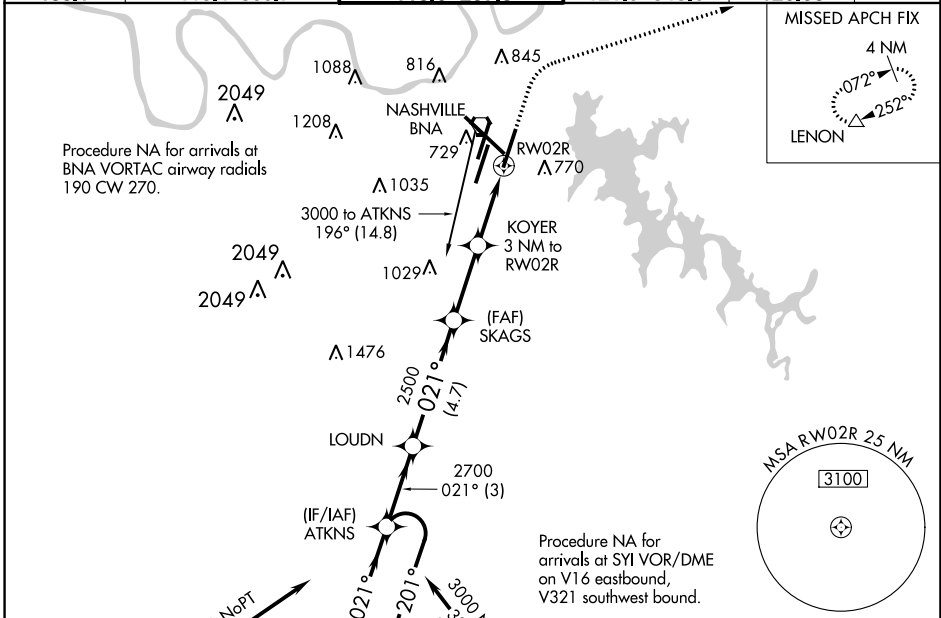
WAAS CH <b>93713</b> <b>W02D</b>	APP CRS <b>021°</b>	Rwy Idg TDZE Apt Elev	<b>8000</b> <b>590</b> <b>599</b>
--	------------------------	-----------------------------	---

# RNAV (GPS) Y RWY 2R

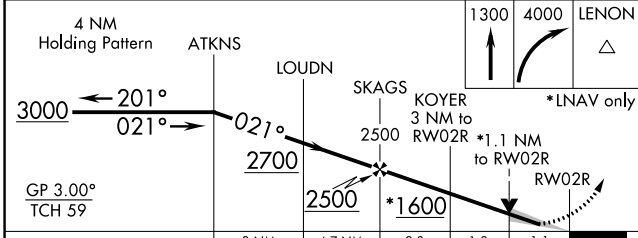
NASHVILLE INTL (BNA)

RNP APCH.	<p>For uncompensated Baro-VNAV systems, LNAV/VNAV NA below -11°C or above 54°C. Simultaneous approach authorized with Rwy 2L/C. LNAV procedure NA during simultaneous operations. Use of FD or AP providing RNAV track guidance required during simultaneous operations. For inop ALSF-2 increase LNAV/VNAV visibility all Cats to RVR 5400.</p>	<p>ALSF-2</p>	<p>MISSED APPROACH: Climb to 1300 then climbing right turn to 4000 direct LENON and hold.</p>
-----------	--	---------------	---

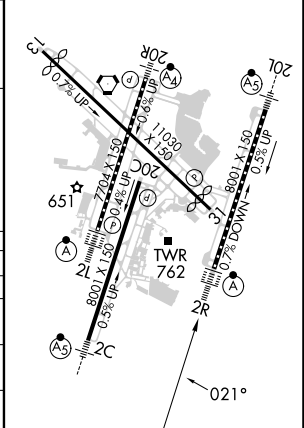
D-ATIS <b>135.1</b>	NASHVILLE APP CON <b>118.4 360.7</b>	NASHVILLE TOWER <b>118.6 257.8</b>	GND CON <b>121.9 348.6</b>	CLNC DEL <b>126.05</b>	CPDLC
------------------------	---	---------------------------------------	-------------------------------	---------------------------	-------



ELEV 599	<b>D</b> TDZE 590
HIRL all Rwys TDZ/CL Rwys 2L and 2R REIL Rwys 13, 20C, and 31	



CATEGORY	A	B	C	D
LPV DA		790/18	200 (200-½)	
LNAV/VNAV DA		928/30	338 (400-¾)	
LNAV MDA	1020/24	430 (500-½)	1020/40	430 (500-¾)
<b>C</b> CIRCLING	1100-1 501 (600-1)	1120-1 521 (600-1)	1200-1¾ 601 (700-1¾)	1380-2½ 781 (800-2½)



SE-1, 11 JUL 2024 to 08 AUG 2024

SE-1, 11 JUL 2024 to 08 AUG 2024