

GBAS CH 21905 G11A	APP CRS 108°	Rwy ldg TDZE 17 Apt Elev 17	6726
--	------------------------	---	-------------

GLS RWY 11

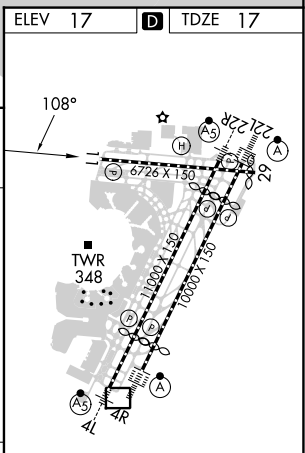
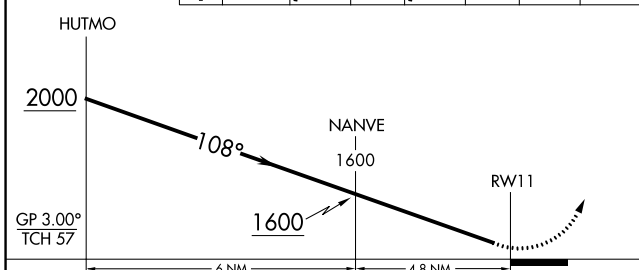
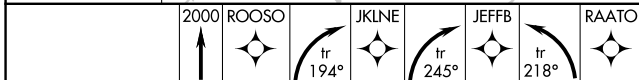
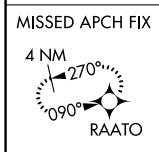
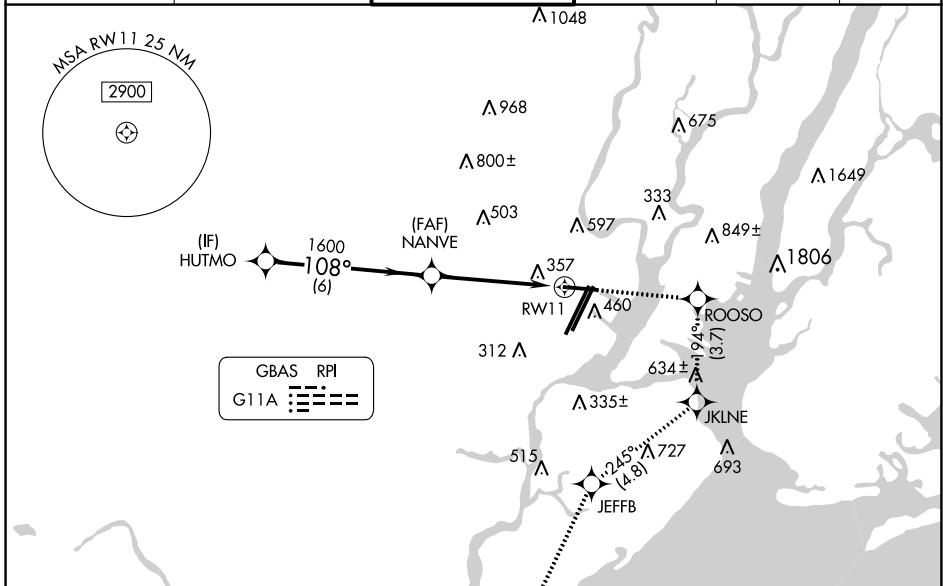
NEWARK LIBERTY INTL (EWR)

RNP APCH - GPS.
RADAR required.

MISSED APPROACH: (Do not exceed 230K until JKLNE)
Climb to 2000 direct ROOSO and right turn on track 194° to JKLNE and right turn on track 245° to JEFFB and left turn on track 218° to RAATO and hold.

Autopilot coupled approach NA below 312.
Rwy 11 helicopter visibility reduction below RVR 4000 NA.

D-ATIS 115.7 134.825	NEW YORK APP CON 128.55 379.9	NEWARK TOWER 118.3 257.6	GND CON 121.8	CLNC DEL 118.85	CPDLC
--------------------------------	---	------------------------------------	-------------------------	---------------------------	-------



CATEGORY	A	B	C	D
GLS DA	312/45		295 (300-7%)	

HIRL All Rwy's
REIL Rwy's 11, 22R, and 29
TDZ/CL All Rwy's

NE-2, 11 JUL 2024 to 08 AUG 2024

NE-2, 11 JUL 2024 to 08 AUG 2024