

LOC/DME I-EZA <b>108.7</b> Chan <b>24</b>	APP CRS <b>039°</b>	Rwy Idg <b>8810</b> TDZE <b>11</b> Apt Elev <b>17</b>
-------------------------------------------------	------------------------	-------------------------------------------------------------

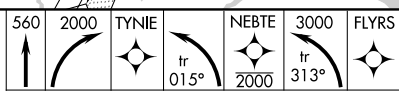
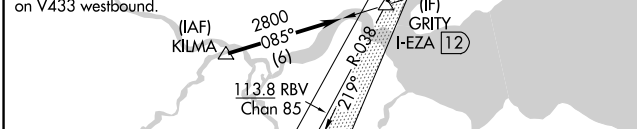
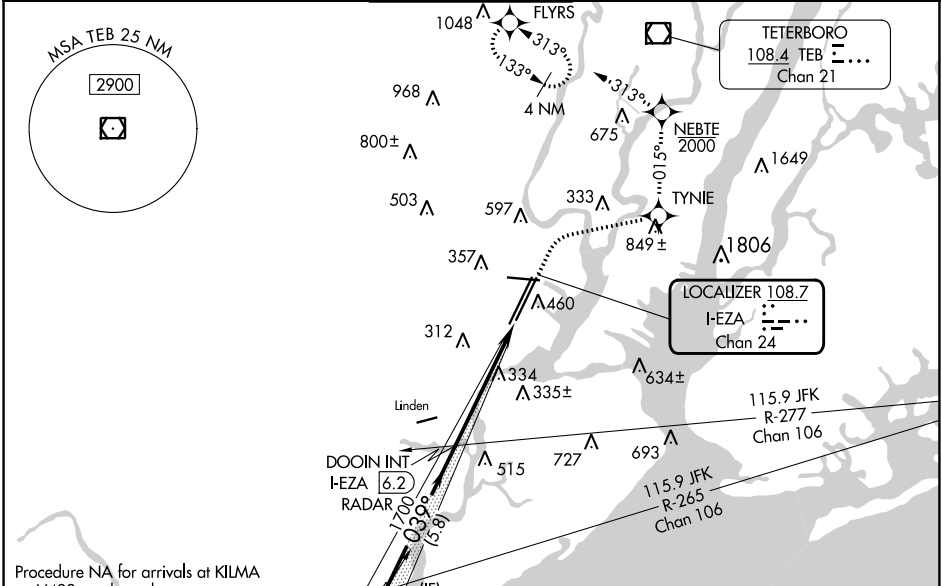
# ILS RWY 4R (CAT II & III)

NEWARK LIBERTY INTL (EWR)

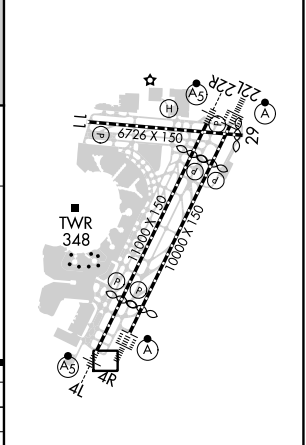
RNP APCH - GPS. RADAR required.	ALSF-2 
------------------------------------	------------

MISSED APPROACH: (Do not exceed 210K until NEBTE) Climb to 560 then climbing right turn to 2000 direct TYNIE and left turn on track 015° to NEBTE, cross NEBTE at or below 2000 then climbing left turn to 3000 on track 313° to FLYRS and hold, continue climb-in-hold to 3000.

D-ATIS <b>115.7 134.825</b>	NEW YORK APP CON <b>128.55 379.9</b>	NEWARK TOWER <b>118.3 257.6</b>	GND CON <b>121.8</b>	CLNC DEL <b>118.85</b>	CPDLC
--------------------------------	-----------------------------------------	------------------------------------	-------------------------	---------------------------	-------



ELEV 17	<b>D</b>	TDZE 11
---------	----------	---------



CATEGORY	A	B	C	D
S-ILS 4R	CAT II	RA 100/12	100	DA 111
S-ILS 4R	CAT III	RVR 06		

## CATEGORY II & III ILS - SPECIAL AIRCREW & AIRCRAFT CERTIFICATION REQUIRED

HIRL All Rwys  
REIL Rwys 11, 22R, and 29  
TDZ/CL All Rwys

NE-2, 11 JUL 2024 to 08 AUG 2024

NE-2, 11 JUL 2024 to 08 AUG 2024