

LOC/DME I-GPR 109.15 Chan 28 (Y)	APP CRS 107°	Rwy ldg 6726 TDZE 17 Apt Elev 17
---	------------------------	---

ILS or LOC RWY 11

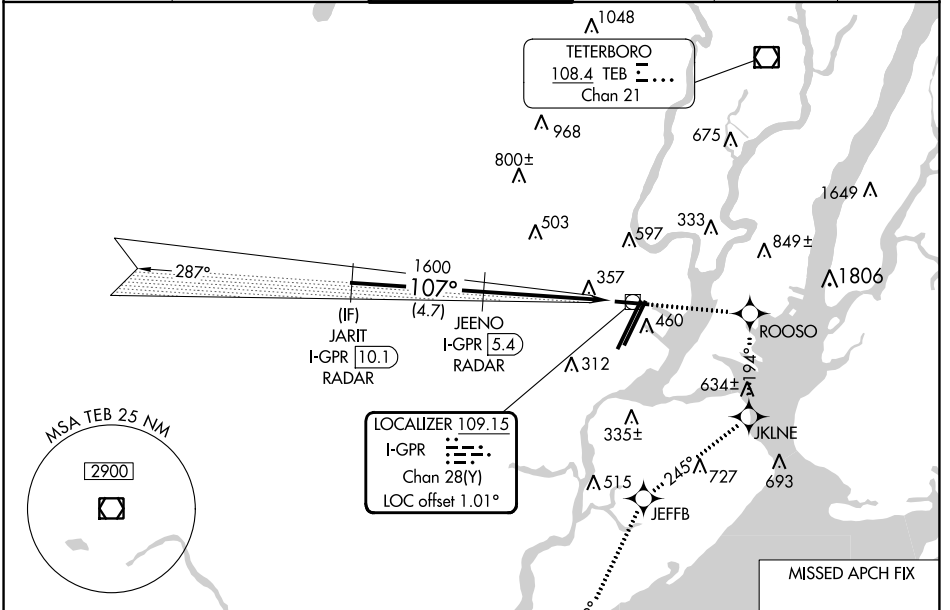
NEWARK LIBERTY INTL (EWR)

RNP APCH - GPS.
DME required. RADAR required.

⚠ Circling NA south of Rwy 11-29. When Circling to Rwy 29 at night, operational VGS1 required, remain on or above VGS1 glidepath until threshold. Rwy 11 helicopter visibility reduction below ¼ SM NA.

MISSED APPROACH: (Do not exceed 230K until JKLNE) Climb to 2000 direct ROOSO and right turn on track 194° to JKLNE and right turn on track 245° to JEFFB and left turn on track 218° to RAATO and hold.

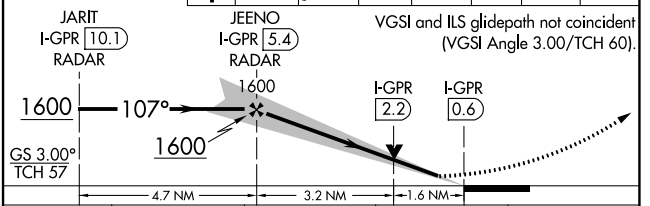
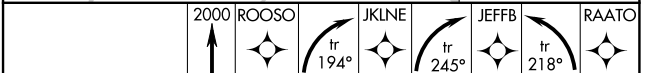
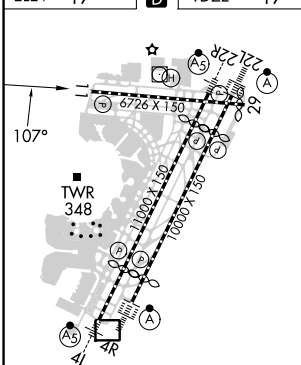
D-ATIS 115.7 134.825	NEW YORK APP CON 128.55 379.9	NEWARK TOWER 118.3 257.6	GND CON 121.8	CLNC DEL 118.85	CPDLC
--------------------------------	---	------------------------------------	-------------------------	---------------------------	-------



NE-2, 11 JUL 2024 to 08 AUG 2024

NE-2, 11 JUL 2024 to 08 AUG 2024

ELEV 17	D	TDZE 17
---------	----------	---------



CATEGORY	A	B	C	D
S- ILS 11	618-1¾ 601 (700-1¾)			
S- LOC 11	660/55	643 (700-1)	660-1⅝ 643 (700-1⅝)	900-2½ 900-2¾
C CIRCLING	660-1	643 (700-1)	883 (900-2½)	883 (900-2¾)