

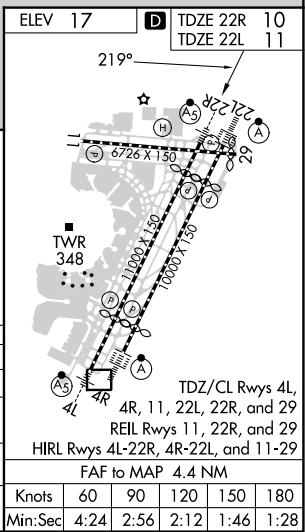
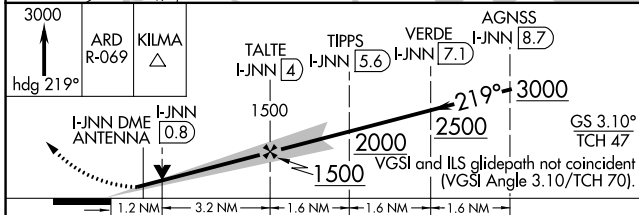
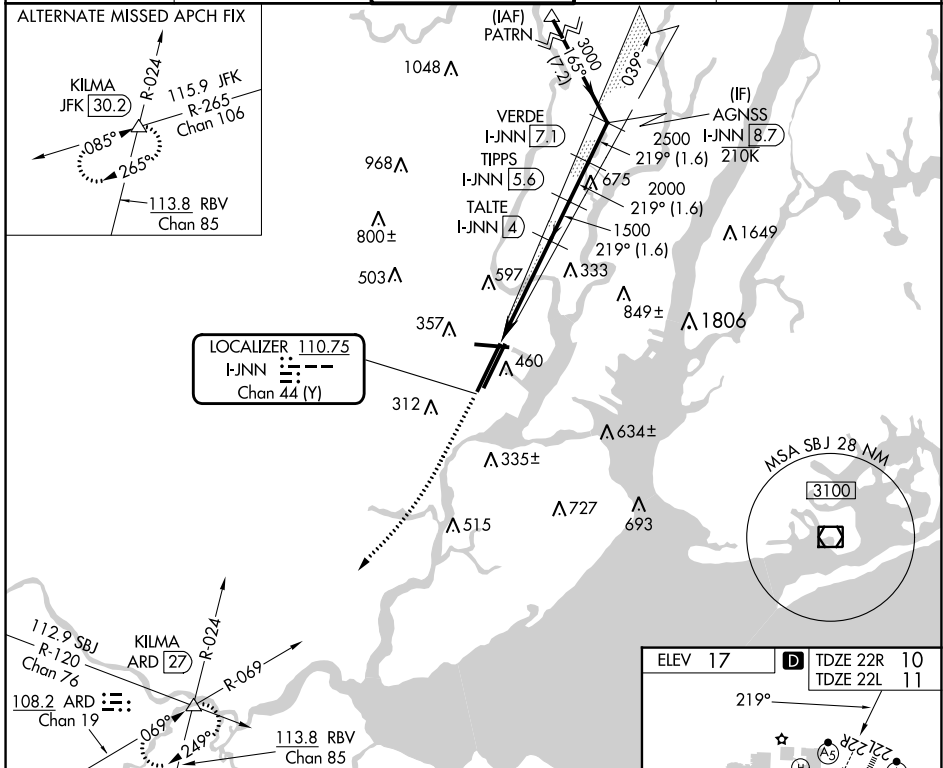
LOC/DME I-JNN <b>110.75</b> Chan 44 (Y)	APP CRS <b>219°</b>	Rwy Idg TDZE Apt Elev	22R <b>9560</b> <b>10</b> <b>17</b>	22L <b>8207</b> <b>11</b> <b>17</b>
---	------------------------	-----------------------------	--	--

# ILS or LOC RWY 22R

NEWARK LIBERTY INTL (EWR)

RNP APCH - GPS Aircraft not GPS equipped - RADAR required for procedure entry. DME required.		22R MALS R	22L ALS-F2	MISSED APPROACH: Climb to 3000 on heading 219° and ARD VOR/DME R-069 to KILMA INT/ARD 27 DME and hold.
<p>▼ Circling NA south of Rwy 11-29. When Circling to Rwy 29 at night, operational VGSI required, remain on or above VGSI glidepath until threshold. For inop ALS, increase S-LOC 22R Cat C/D visibility to 1 3/8 SM.</p> <p>▲</p>		AS	A	

D-ATIS <b>115.7</b>	NEW YORK APP CON <b>134.825</b>	NEW YORK APP CON <b>128.55 379.9</b>	NEWARK TOWER <b>118.3 257.6</b>	GND CON <b>121.8</b>	CLNC DEL <b>118.85</b>	CPDLC
------------------------	------------------------------------	---	------------------------------------	-------------------------	---------------------------	-------



CATEGORY	A	B	C	D
S-ILS 22R	210/18		200 (200-1/2)	
S-LOC 22R	480/24	470 (500-1/2)	480/50	470 (500-1)
SIDESTEP RWY 22L	540/55 529 (600-1)		540-1 1/2 529 (600-1 1/2)	
<b>C</b> CIRCLING	660-1	643 (700-1)	900-2 3/4 883 (900-2 3/4)	900-3 883 (900-3)

NE-2, 11 JUL 2024 to 08 AUG 2024

NE-2, 11 JUL 2024 to 08 AUG 2024