

LOC/DME I-EZA	APP CRS	Rwy Idg	4R	4L
<b>108.7</b>	<b>039°</b>		<b>8810</b>	<b>8460</b>
Chan <b>24</b>		TDZE	<b>11</b>	<b>10</b>
		Apt Elev	<b>17</b>	<b>17</b>

# ILS or LOC RWY 4R

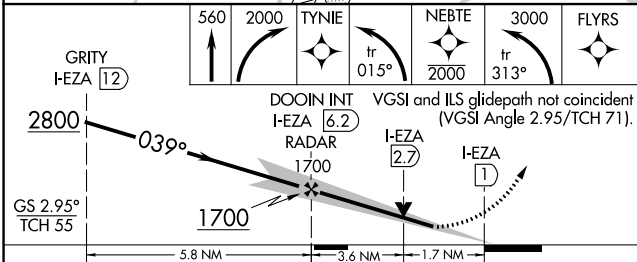
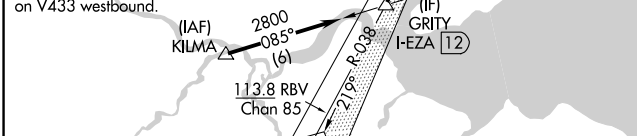
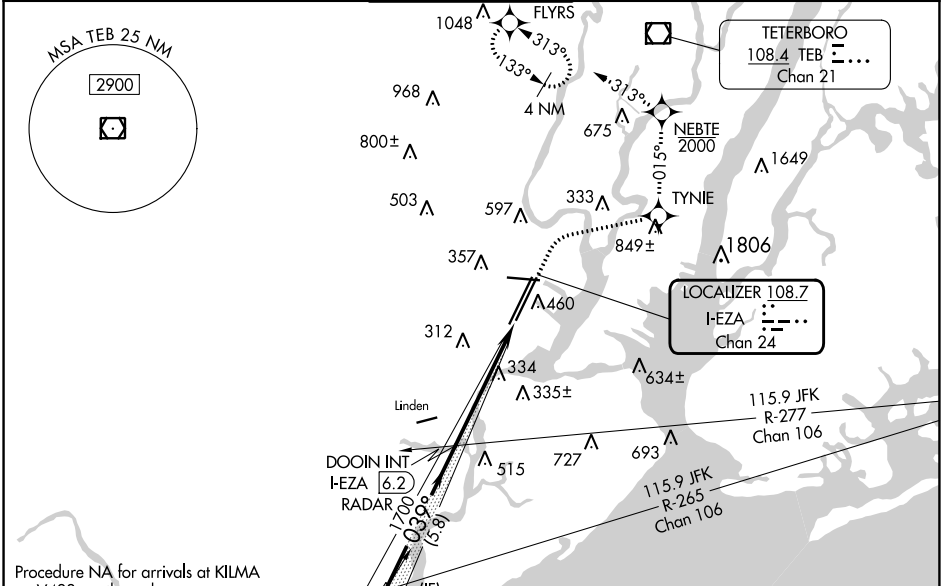
NEWARK LIBERTY INTL (EWR)

RNP APCH - GPS. RADAR required.

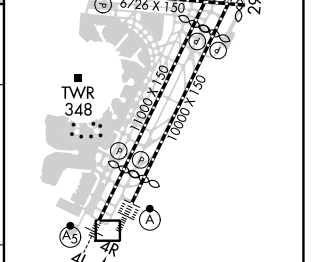
When Circling to Rwy 29 at night, operational VGSi required, remain on or above VGSi glidepath until threshold. For inop ALS, increase Sidestep 4L Cat C visibility to 1½ SM.

MISSED APPROACH: (Do not exceed 210K until NEBTE) Climb to 560 then climbing right turn to 2000 direct TYNIE and left turn on track 015° to NEBTE, cross NEBTE at or below 2000 then climbing left turn to 3000 on track 313° to FLYRS and hold, continue climb-in-hold to 3000.

D-ATIS	NEW YORK APP CON	NEWARK TOWER	GND CON	CLINC DEL	CPDLC
<b>115.7 134.825</b>	<b>128.55 379.9</b>	<b>118.3 257.6</b>	<b>121.8</b>	<b>118.85</b>	



ELEV 17	TDZE 4R 11
	TDZE 4L 10



CATEGORY	A	B	C	D
S-ILS 4R	211/18 200 (200-½)			
S-LOC 4R	600/24	589 (600-½)	600-1¼	589 (600-1¼)
SIDESTEP RWY 4L	600/55	590 (600-1)	600-1¼ 590 (600-1¼)	600-1½ 590 (600-1½)
CIRCLING	760-1	743 (800-1)	900-2¾ 883 (900-2¾)	900-3 883 (900-3)

FAF to MAP 5.2 NM					
Knots	60	90	120	150	180
Min:Sec	5:12	3:28	2:36	2:05	1:44

NE-2, 11 JUL 2024 to 08 AUG 2024

NE-2, 11 JUL 2024 to 08 AUG 2024