

RNAV (GPS) RWY 4L

NEWARK LIBERTY INTL (EWR)

| | | |
|--|------------------------|---|
| WAAS CH 56224 W04A | APP CRS 039° | Rwy Idg 8460 TDZE 10 Apt Elev 17 |
|--|------------------------|---|

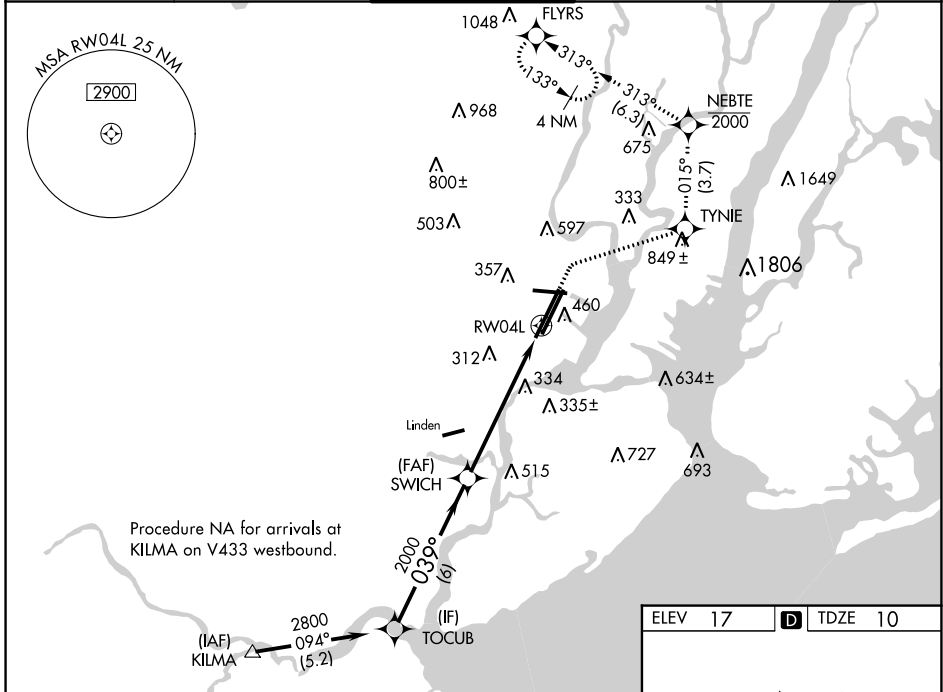
RNP APCH - GPS.

▼ When Circling to Rwy 29 at night, operational VGSI required, remain on or above VGSI glidepath until threshold. For uncompensated Baro-VNAV systems, LNAV/VNAV NA below -12°C or above 54°C.

MALSR
AS

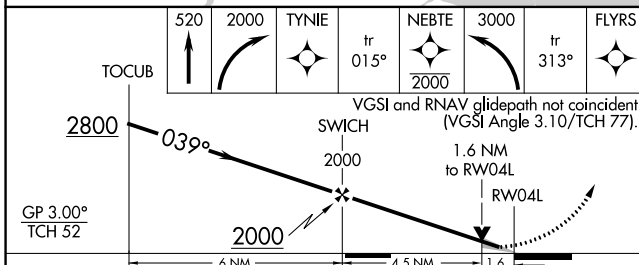
MISSED APPROACH: (Do not exceed 210K until NEBTE) Climb to 520, then climbing right turn to 2000 direct TYNIE, and on track 015° to NEBTE, cross NEBTE at or below 2000, then climbing left turn to 3000 on track 313° to FLYRS and hold, continue climb-in-hold to 3000.

| | | | | | |
|--------------------------------|---|---|-------------------------|---------------------------|-------|
| D-ATIS 115.7 134.825 | NEW YORK APP CON 128.55 379.9 | NEWARK TOWER 118.3 257.6 | GND CON 121.8 | CLNC DEL 118.85 | CPDLC |
|--------------------------------|---|---|-------------------------|---------------------------|-------|

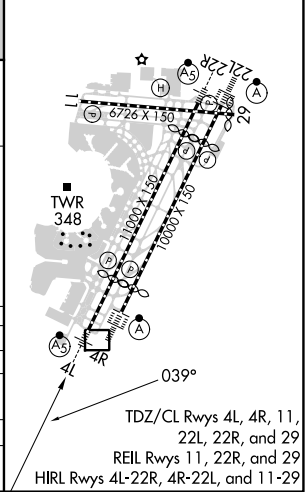


NE-2, 11 JUL 2024 to 08 AUG 2024

NE-2, 11 JUL 2024 to 08 AUG 2024



| | |
|---------|------------------|
| ELEV 17 | D TDZE 10 |
|---------|------------------|



| | | | | |
|-------------------|--------|-------------|------------------------|----------------------|
| CATEGORY | A | B | C | D |
| LPV DA | | 210/18 | 200 (200-½) | |
| LNAV/ VNAV | | 550/55 | 540 (600-1) | |
| LNAV MDA | 600/24 | 590 (600-½) | 600-1¼ | 590 (600-1¼) |
| C CIRCLING | 760-1 | 743 (800-1) | 900-2¾ 883 (900-2¾) | 900-3 883 (900-3) |