

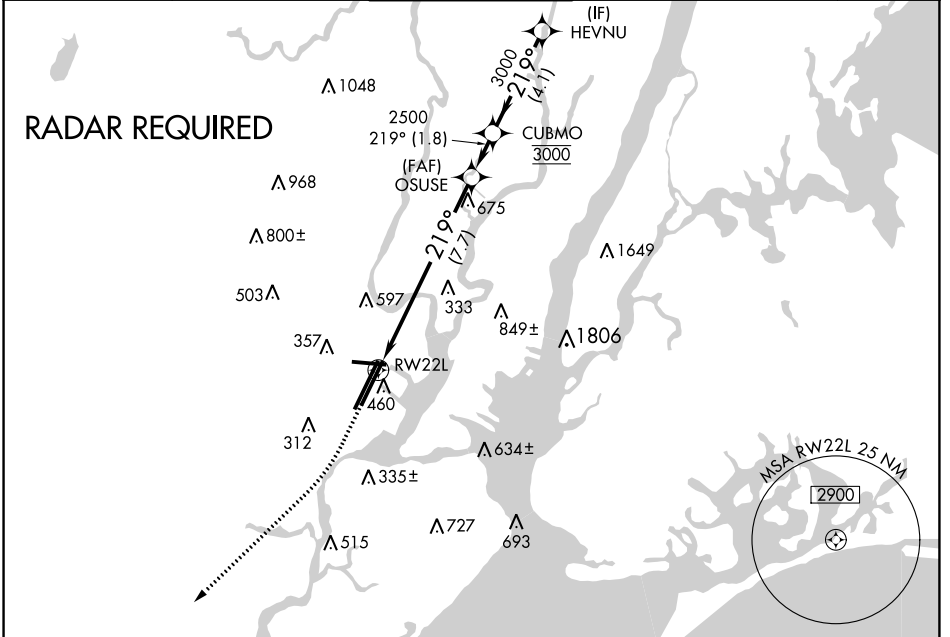
APP CRS <b>219°</b>	Rwy Idg <b>8207</b>
	TDZE <b>11</b>
	Apt Elev <b>17</b>

# RNAV (RNP) Y RWY 22L

NEWARK LIBERTY INTL (EWR)

RNP AR APCH - GPS.	ALSF-2 	MISSED APPROACH: Climb to 600 then climbing right turn to 3000 direct KILMA and hold.
For uncompensated Baro-VNAV systems, procedure NA below -13°C or above 54°C.		

D-ATIS <b>115.7 134.825</b>	NEW YORK APP CON <b>128.55 379.9</b>	NEWARK TOWER <b>118.3 257.6</b>	GND CON <b>121.8</b>	CLNC DEL <b>118.85</b>	CPDLC
--------------------------------	---	------------------------------------	-------------------------	---------------------------	-------

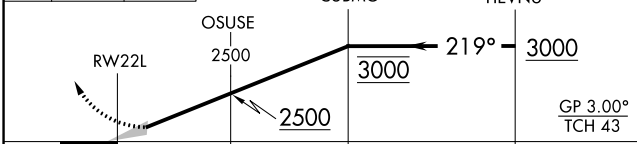


NE-2, 11 JUL 2024 to 08 AUG 2024

NE-2, 11 JUL 2024 to 08 AUG 2024

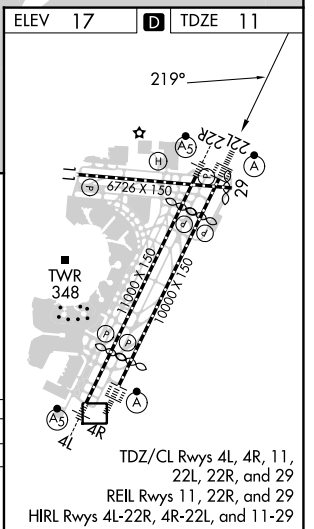


ELEV 17	TDZE 11
600	3000
KILMA	△
VGSI and RNAV glidepath not coincident (VGSI Angle 3.00/TCH 60).	



CATEGORY	A	B	C	D
RNP 0.30 DA	462/50		451 (500-1)	

## AUTHORIZATION REQUIRED



TDZ/CL Rwy's 4L, 4R, 11, 22L, 22R, and 29  
 REIL Rwy's 11, 22R, and 29  
 HIRL Rwy's 4L-22R, 4R-22L, and 11-29