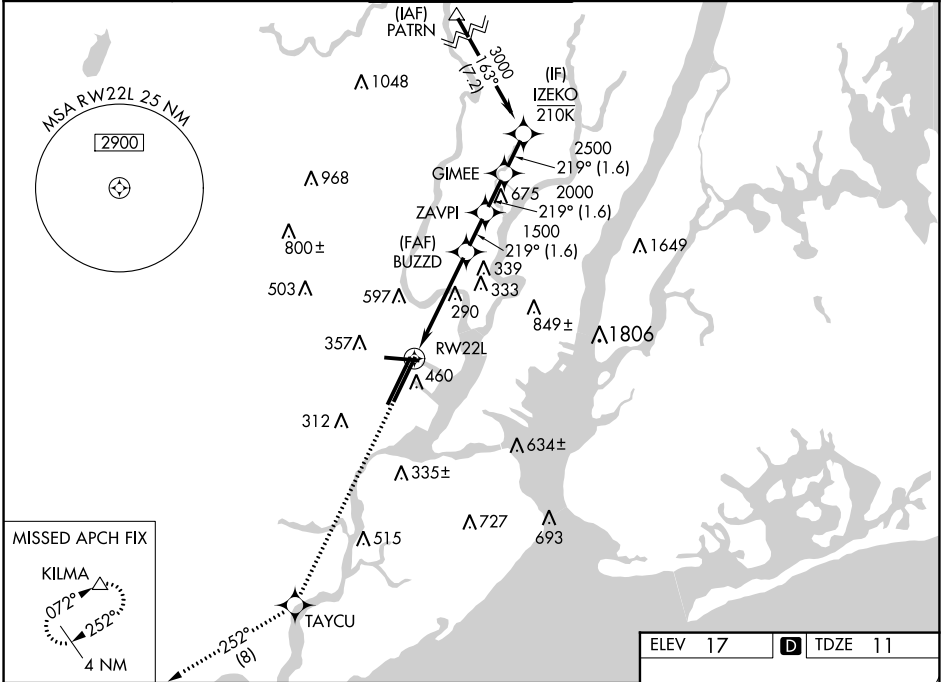


WAAS CH 70324 W22A	APP CRS 219°	Rwy Idg 8207 TDZE 11 Apt Elev 17
--	------------------------	---

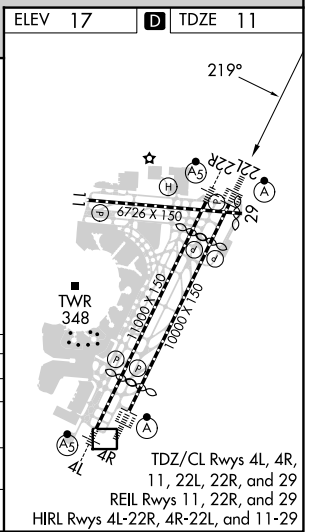
RNAV (GPS) Z RWY 22L

NEWARK LIBERTY INTL (EWR)

RNP APCH - GPS.		NEWARK TOWER 118.3 257.6		GND CON 121.8	CLNC DEL 118.85	CPDLC
<p>⚠ Circling NA south of Rwy 11-29. For uncompensated Baro-VNAV systems, LNAV/VNAV NA below -12°C or above 54°C. When Circling to Rwy 29 at night, operational VGSI required, remain on or above VGSI glidepath until threshold.</p>		<p>ALSF-2 (A)</p>		<p>MISSED APPROACH: Climb to 3000 direct TAYCU and on track 252° to KILMA and hold.</p>		



3000	TAYCU	tr 252°	KILMA	VGSI and RNAV glidepath not coincident (VGSI Angle 3.00/TCH 60).			
				<p>IZEKO GIMEE ZAVPI BUZZD RW22L</p> <p>3000 2500 2000 1500</p> <p>GP 3.00° TCH 43</p>			
1.5 NM		3 NM		1.6 NM		1.6 NM	
CATEGORY	A		B		C		D
LPV DA			211/18		200 (200-½)		
LNAV/VNAV DA			462/45		451 (500-¾)		
LNAV MDA	560/24		549 (600-½)		560/60		549 (600-1¼)
C CIRCLING	660-1		643 (700-1)		900-2¾ 883 (900-2¾)		900-3 883 (900-3)



NE-2, 11 JUL 2024 to 08 AUG 2024

NE-2, 11 JUL 2024 to 08 AUG 2024

RNAV (GPS) Z RWY 22L