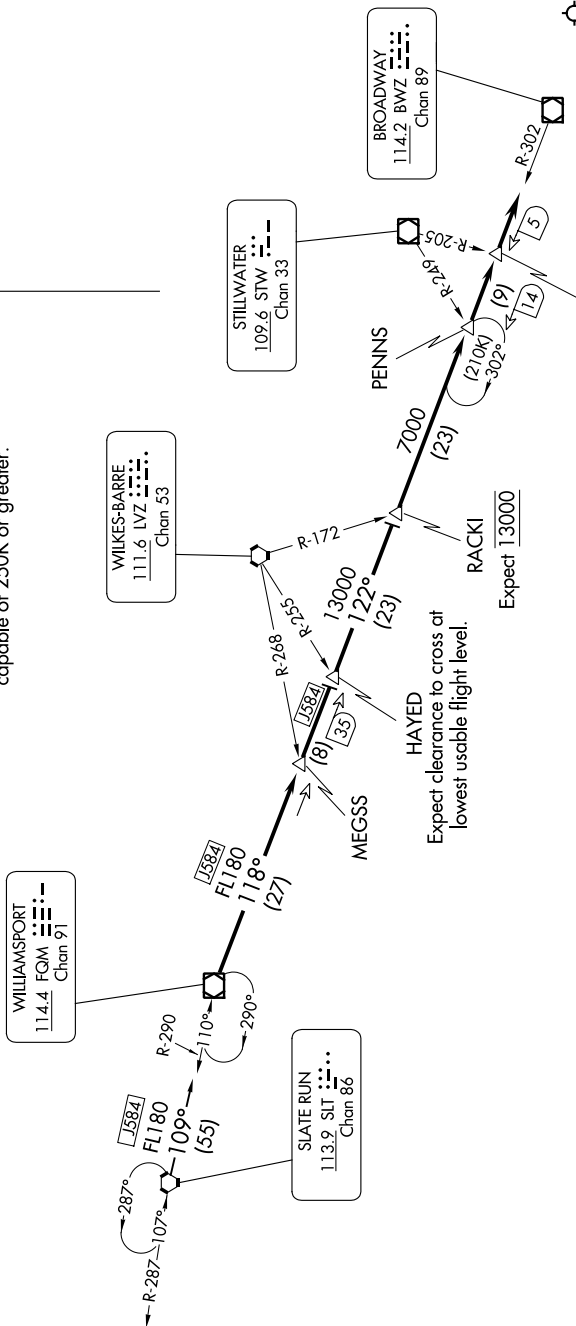


# WILLIAMSPORT THREE ARRIVAL

NE-2, 11 JUL 2024 to 08 AUG 2024

NEW YORK APP CON  
127.6 379.9  
D-AIS  
115.7 134.825

NOTE: This STAR is for aircraft capable of 250K or greater.



## ARRIVAL ROUTE DESCRIPTION

SLATE RUN TRANSITION (SLT.FQM3): From over SLT VORTAC on SLT R-109 to FQM VOR/DME.

From FQM VOR/DME on FQM R-118 to HAYED INT. Then on BWZ R-302 to RACKI INT. Then on BWZ R-302 to SWEET INT. Depart SWEET heading 122°. Expect vectors to final approach course.

SWEET  
Expect 7000  
A higher crossing altitude may be required between the hours of 2300 to 0700 local.

NOTE: Chart not to scale.

# WILLIAMSPORT THREE ARRIVAL

(FQM.FQM3) 31MAY12

NE-2, 11 JUL 2024 to 08 AUG 2024