

LOC/DME I-URD <b>110.5</b> Chan <b>42</b>	APP CRS <b>224°</b>	Rwy Idg TDZE <b>12</b> Apt Elev <b>21</b>	<b>7002</b>
-------------------------------------------------	------------------------	-------------------------------------------------	-------------

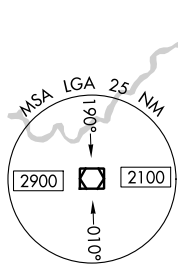
# COPTER ILS or LOC RWY 22

LAGUARDIA (LGA)

DME required.		ALSIF-1	MISSED APPROACH: Climb to 3000 on LGA VOR/DME R-225 to PROUD/LGA VOR/DME 11 DME and hold.		
---------------	--	---------	-------------------------------------------------------------------------------------------	--	--

D-ATIS ARR <b>125.95</b>	NEW YORK APP CON <b>120.8 263.0</b>	LAGUARDIA TOWER <b>118.7 263.0</b>	GND CON <b>121.7 263.0</b>	CLNC DEL <b>135.2</b> (COPTER)	CPDLC
D-ATIS DEP <b>127.05</b>					

## DME and RADAR REQUIRED

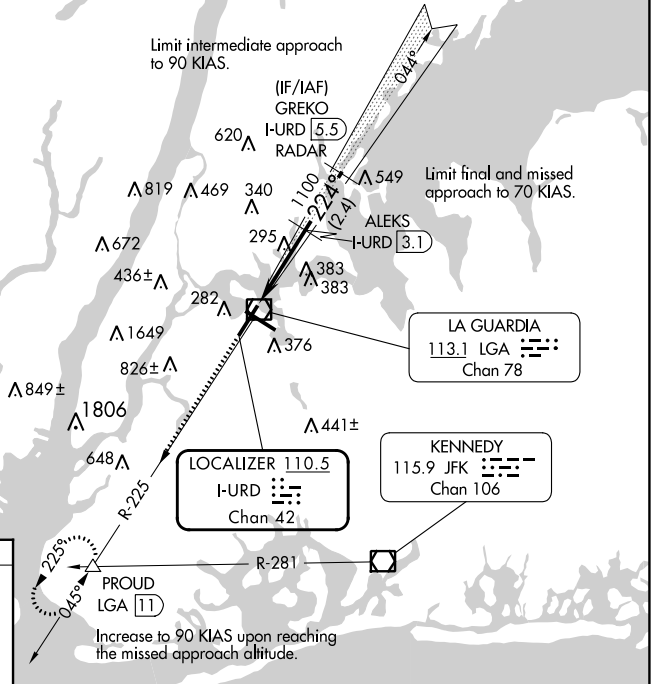
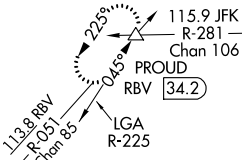


Limit intermediate approach to 90 KIAS.

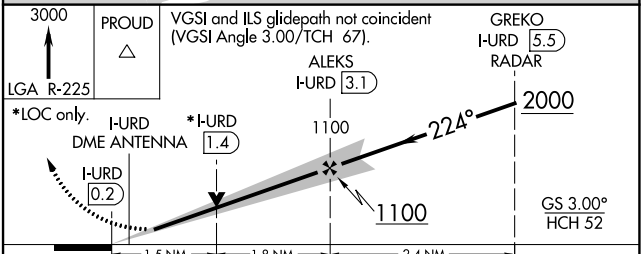
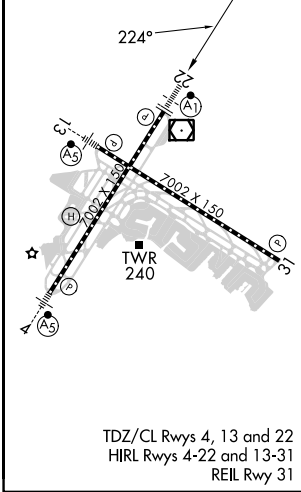
(IF/IAF) GREKO I-URD [5.5] RADAR

Limit final and missed approach to 70 KIAS.

### ALTERNATE MISSED APCH FIX



ELEV 21	<b>D</b>	TDZE 12
---------	----------	---------



CATEGORY	COPTER	
H-ILS 22	212/12	200 (200-1/8)
H-LOC 22	560/12	548 (600-1/8)

NE-2, 11 JUL 2024 to 08 AUG 2024

NE-2, 11 JUL 2024 to 08 AUG 2024