

LOC/DME I-LGA 110.5 Chan 42	APP CRS 044°	Rwy Idg TDZE 21 Apt Elev 21	7002
---	------------------------	---	-------------

ILS or LOC RWY 4

LAGUARDIA (LGA)

RNP APCH - GPS.

▼ Rwy 4 helicopter visibility reduction below RVR 5000 NA. Inop table does not apply to S-LOC 4 Cats A and B and WARIN fix minimums Cats A and B. For inop ALS increase S-ILS 4 all Cats visibility to RVR 4500. Going below glidepath may not provide obstacle clearance inside DA. Crossing Rwy threshold below charted TCH may not provide required visual area obstacle clearance. Autopilot couple approach NA. Circling NA northwest of Rwy 4 and southwest of Rwy 13.
* RVR 2400 authorized with use of FD or HUD to DA.

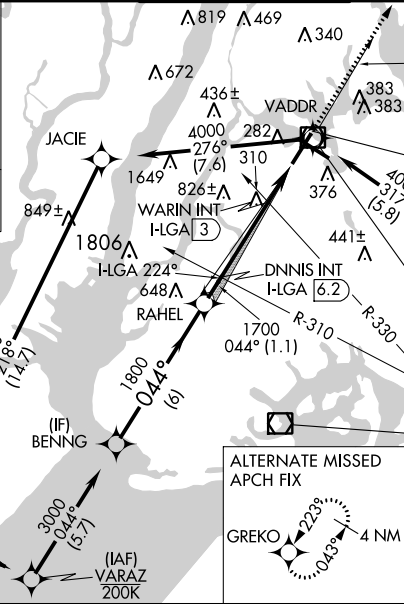
MALS R

MISSED APPROACH:
Climb to 2000 on LGA VOR/DME R-043 to GREKO INT/LGA 5.7 DME and hold, continue climb-in-hold to 2000.

D-ATIS ARR 125.95	NEW YORK APP CON D-ATIS DEP 127.05	LAGUARDIA TOWER 118.7 263.0	GND CON 121.7 263.0	CLNC DEL 135.2	CPDLC
--------------------------	--	---------------------------------------	-------------------------------	--------------------------	-------

MISSED APCH FIX

GREKO INT LGA **5.7**



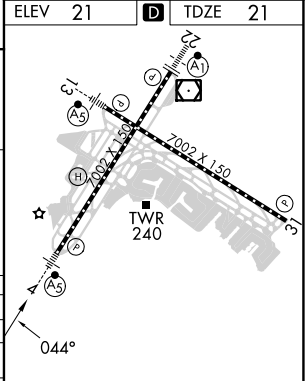
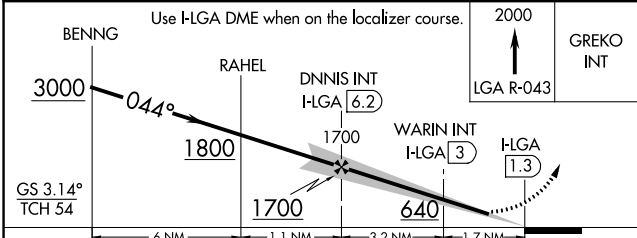
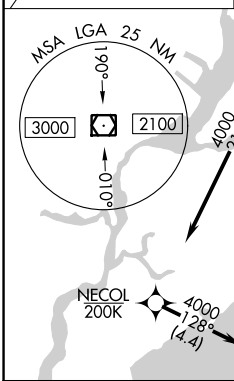
LOCALIZER 110.5
I-LGA Chan 42

LA GUARDIA
113.1 LGA Chan 78

KENNEDY
115.9 JFK Chan 106

CANARSIE
112.3 CRI Chan 70

ALTERNATE MISSED APCH FIX
GREKO **228** **043** 4 NM



CATEGORY	A	B	C	D
S-ILS 4 *	283/40 262 (300-¾)			
S-LOC 4	640/50	619 (700-1)	640-1⅜	619 (700-1⅜)
C CIRCLING	680-1	659 (700-1)	700-2 679 (700-2)	760-2¼ 739 (800-2¼)
WARIN FIX MINIMUMS (DUAL VOR RECEIVERS OR DME REQUIRED)				
S-LOC 4	560/50	539 (600-1)	560/55	539 (600-1)
C CIRCLING	680-1	659 (700-1)	700-2 679 (700-2)	760-2¼ 739 (800-2¼)

TDZ/CL Rws 4, 13 and 22
HIRL Rws 4-22 and 13-31
REIL Rwy 31

FAF to MAP 4.9 NM

Knots	60	90	120	150	180
Min:Sec	4:54	3:16	2:27	1:58	1:38

NE-2, 11 JUL 2024 to 08 AUG 2024

NE-2, 11 JUL 2024 to 08 AUG 2024