

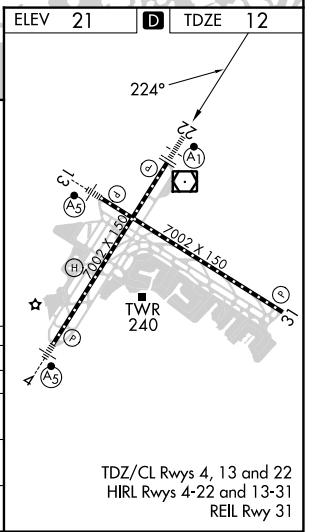
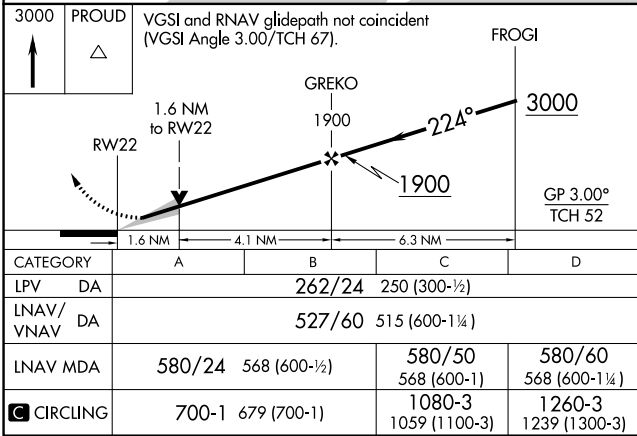
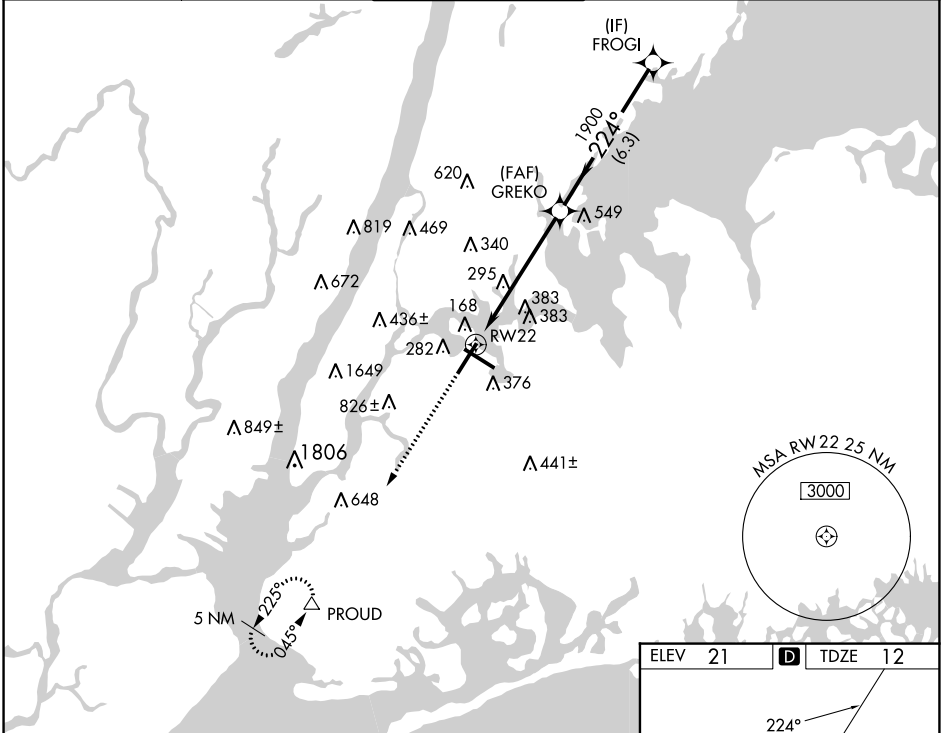
WAAS CH <b>70318</b> <b>W22A</b>	APP CRS <b>224°</b>	Rwy Idg TDZE <b>12</b> Apt Elev <b>21</b>
--	------------------------	---

# RNAV (GPS) Y RWY 22

LAGUARDIA (LGA)

RNP APCH - GPS.	ALSF-1	MISSED APPROACH: Climb to 3000 direct PROUD and hold, continue climb-in-hold to 3000.
<p>▼ For uncompensated Baro-VNAV systems, LNAV/VNAV NA below -11°C or above 54°C. Circling NA northwest of Rwy 4 and southwest of Rwy 13.</p>		

D-ATIS ARR <b>125.95</b>	NEW YORK APP CON D-ATIS DEP <b>127.05</b>	<b>120.8 263.0</b>	LAGUARDIA TOWER <b>118.7 263.0</b>	GND CON <b>121.7 263.0</b>	CLNC DEL <b>135.2</b>	CPDLC
--------------------------	--	--------------------	---------------------------------------	-------------------------------	--------------------------	-------



NE-2, 11 JUL 2024 to 08 AUG 2024

NE-2, 11 JUL 2024 to 08 AUG 2024