

(WNDSR.AANET1) 21168

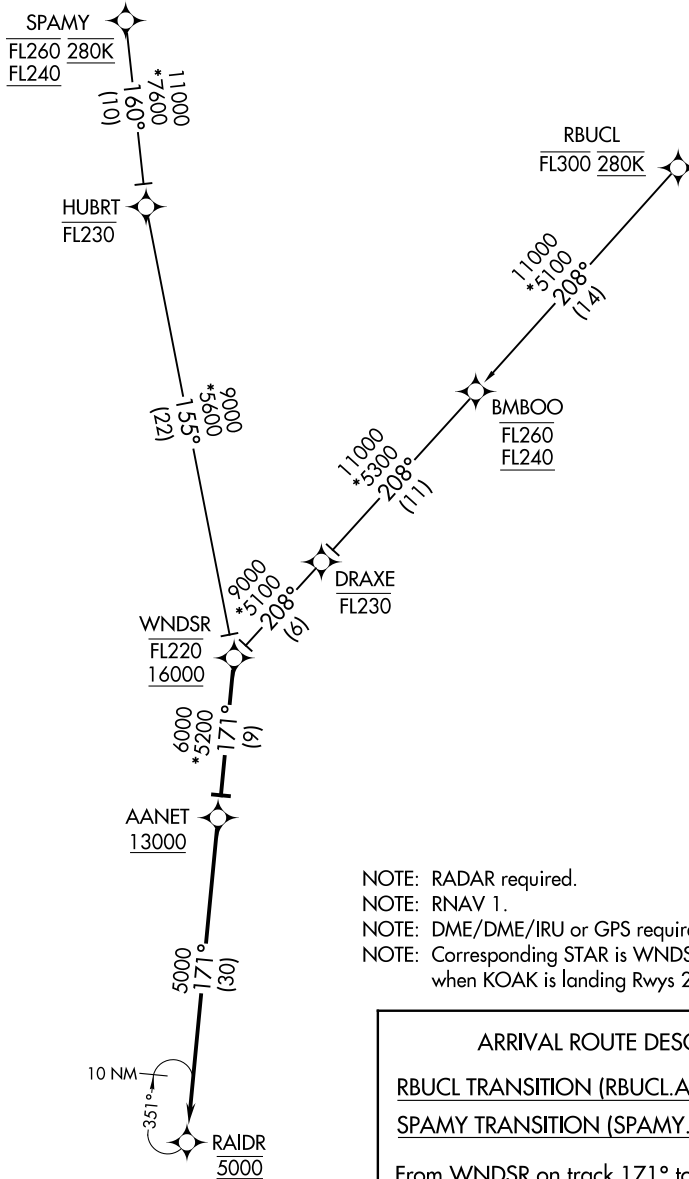
# AANET ONE ARRIVAL (RNAV)

AL-294 (FAA)

METRO OAKLAND INTL (OAK)  
OAKLAND, CALIFORNIA

SW-2, 11 JUL 2024 to 08 AUG 2024

SW-2, 11 JUL 2024 to 08 AUG 2024



D-ATIS  
133.775  
OAKLAND CENTER  
125.85 323.0  
NORCAL APP CON  
125.35 310.8  
OAKLAND TOWER  
127.2 256.9 (Rwy 12)  
GND CON  
121.75

- NOTE: RADAR required.
- NOTE: RNAV 1.
- NOTE: DME/DME/IRU or GPS required.
- NOTE: Corresponding STAR is WNDSR. Expect WNDSR when KOAK is landing Rwy 28L/R and 30.

**ARRIVAL ROUTE DESCRIPTION**

RBUCI TRANSITION (RBUCI.AANET1)

SPAMY TRANSITION (SPAMY.AANET1)

From WNDSR on track 171° to cross AANET at or above 13000.

LANDING RUNWAY 12: From AANET on track 171° to cross RAIDR at 5000. Expect assigned instrument approach procedure.

NOTE: Chart not to scale.

AANET ONE ARRIVAL (RNAV)  
(WNDSR.AANET1) 05MAR15

OAKLAND, CALIFORNIA  
METRO OAKLAND INTL (OAK)