

LOC/DME I-INB <b>108.7</b> Chan <b>24</b>	APP CRS <b>296°</b>	Rwy ldg <b>10000</b> TDZE <b>9</b> Apt Elev <b>9</b>
---	------------------------	--

# ILS RWY 30 (SA CAT I)

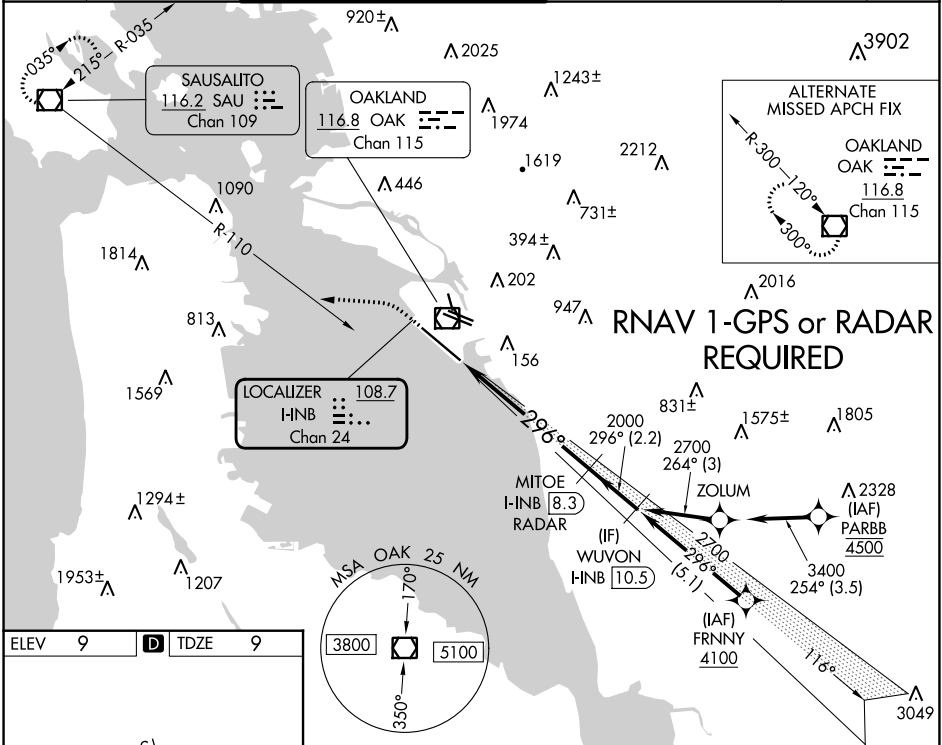
## METRO OAKLAND INTL (OAK)

**⚠** DME or RADAR required. Requires specific OPSPEC, MSPEC or LOA approval and use of HUD to DH. Missed approach requires minimum climb of 240 feet per NM to 2700, if unable to meet climb gradient, see ILS or LOC RWY 30.

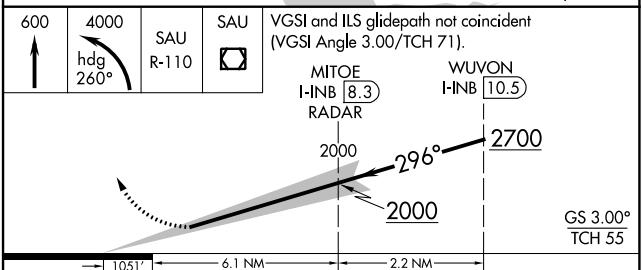
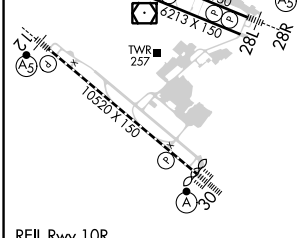
**ALSF-2**  
**A**

**MISSED APPROACH:** Climb to 600 then climbing left turn to 4000 on heading 260° and on SAU VOR/DME R-110 to SAU VOR/DME and hold, continue climb-in-hold to 4000.

D-ATIS <b>133.775</b>	NORCAL APP CON <b>125.35 263.15</b>	OAKLAND TOWER <b>118.3 291.65</b> (Rwys 10L/R-28L/R, 15-33) <b>127.2 256.9</b> (Rwy 12-30)	GND CON <b>121.9</b> (Rwys 10L/R-28L/R, 15-33) <b>121.75</b> (Rwy 12-30)	CLNC DEL <b>121.1</b>	CPDLC
--------------------------	--	--	--	--------------------------	-------



ELEV <b>9</b>	<b>D</b>	TDZE <b>9</b>
---------------	----------	---------------



CATEGORY	A	B	C	D
S-ILS 30	RA 159/14 150 DA 159			

**SA CATEGORY I ILS - SPECIAL AIRCREW & AIRCRAFT CERTIFICATION REQUIRED**

SW-2, 11 JUL 2024 to 08 AUG 2024

SW-2, 11 JUL 2024 to 08 AUG 2024