

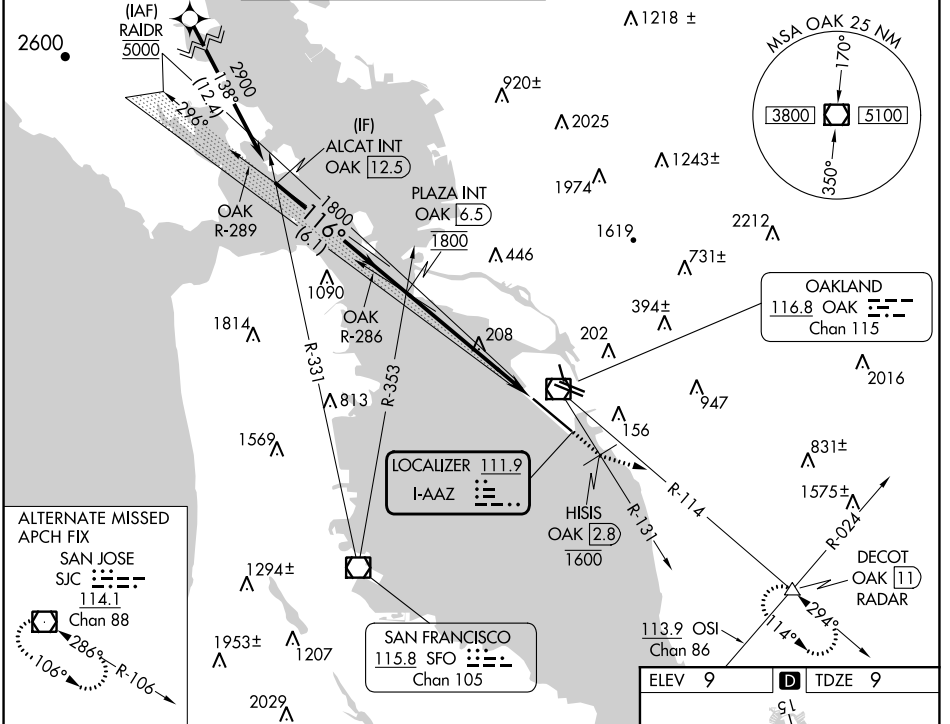
LOC I-AAZ 111.9	APP CRS 116°	Rwy Idg 10000
	TDZE 9	
	Apt Elev 9	

ILS or LOC RWY 12

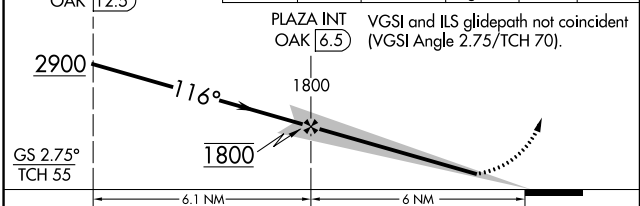
METRO OAKLAND INTL (OAK)

DME required. From RAIDR: RNAV 1-GPS required. MALS R MISSED APPROACH: Climb on heading 116° and on OAK VOR/DME R-131 to cross HISIS/OAK 2.8 DME at or below 1600 then climb to 5100 on heading 090° and on OAK VOR/DME R-114 to DECOT INT/OAK 11 DME/RADAR and hold, continue climb-in-hold to 5100.

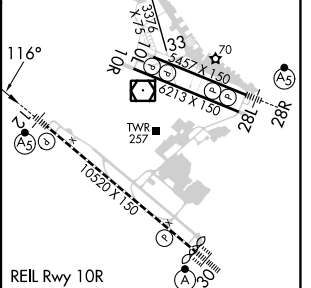
D-ATIS 133.775	NORCAL APP CON 125.35 263.15	OAKLAND TOWER 118.3 291.65 (Rwys 10L/R-28L/R, 15-33) 127.2 256.9 (Rwy 12-30)	GND CON 121.9 (Rwys 10L/R-28L/R, 15-33) 121.75 (Rwy 12-30)	CLNC DEL 121.1	CPDLC
--------------------------	--	--	--	--------------------------	-------



ALCAT INT OAK 12.5	OAK R-131	HISIS OAK 2.8	5100	OAK R-114	DECOT
hdg 116°		1600	hdg 090°		



ELEV 9	TDZE 9
--------	--------



CATEGORY	A	B	C	D
S-ILS 12*	209/24		200 (200-½)	
S-LOC 12	460/24 451 (500-½)		460/45 451 (500-¾)	
CIRCLING	560-1 551 (600-1)		660-1¾ 651 (700-1¾) 1400-3 1391 (1400-3)	

REIL Rwy 10R	TDZ/CL Rwy 30	MIRL Rwy 15-33	HIRL Rwys 12-30, 10L-28R, 10R-28L
FAF to MAP 6 NM			
Knots	60	90	120 150 180
Min:Sec	6:00	4:00	3:00 2:24 2:00

SW-2, 11 JUL 2024 to 08 AUG 2024

SW-2, 11 JUL 2024 to 08 AUG 2024