

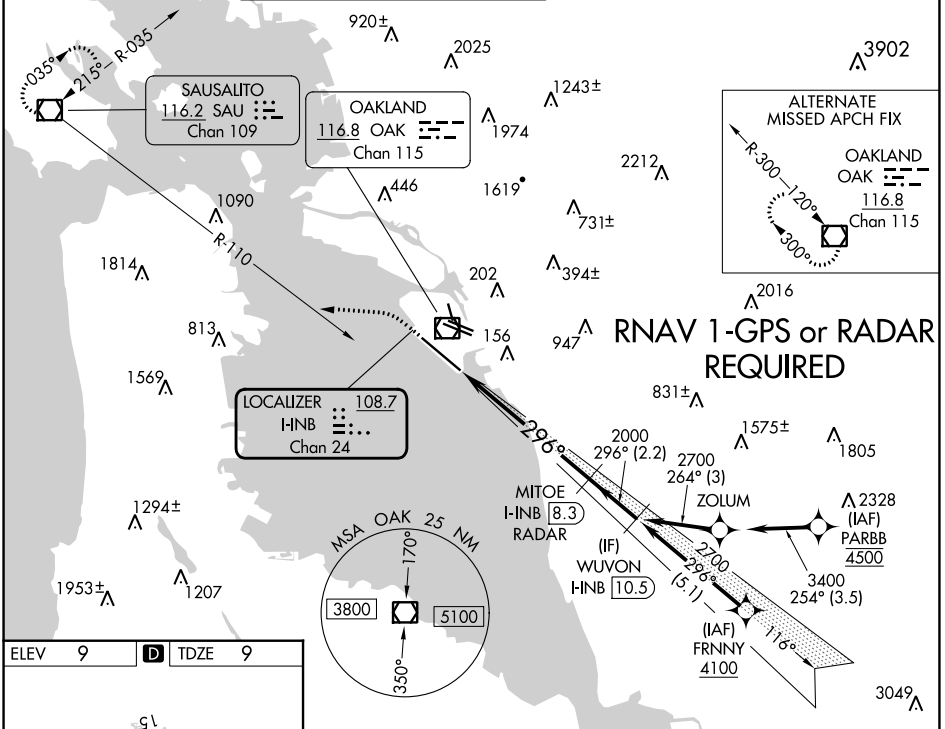
LOC/DME I-INB <b>108.7</b> Chan 24	APP CRS <b>296°</b>	Rwy Idg TDZE Apt Elev <b>10000</b> <b>9</b> <b>9</b>
--	------------------------	---

# ILS or LOC RWY 30

METRO OAKLAND INTL (OAK)

DME or RADAR required.		ALSIF-2	MISSED APPROACH: Climb to 600 then climbing left turn to 4000 on heading 260° and on SAU VOR/DME R-110 to SAU VOR/DME and hold, continue climb-in-hold to 4000.	
------------------------	--	---------	---	--

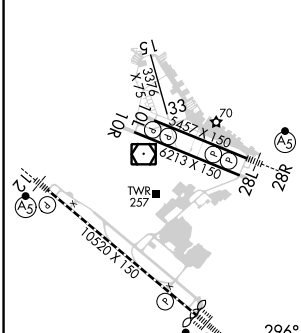
D-ATIS <b>133.775</b>	NORCAL APP CON <b>125.35 263.15</b>	OAKLAND TOWER <b>118.3 291.65</b> (Rwys 10L/R-28L/R, 15-33) <b>127.2 256.9</b> (Rwy 12-30)	GND CON <b>121.9</b> (Rwys 10L/R-28L/R, 15-33) <b>121.75</b> (Rwy 12-30)	CLNC DEL <b>121.1</b>	CPDLC
--------------------------	--	--	--	--------------------------	-------



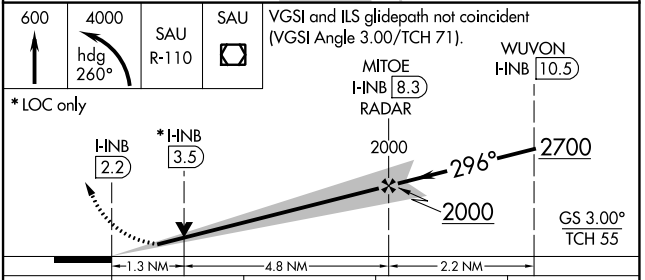
SW-2, 11 JUL 2024 to 08 AUG 2024

SW-2, 11 JUL 2024 to 08 AUG 2024

ELEV 9	<b>D</b>	TDZE 9
--------	----------	--------



REIL Rwy 10R	TDZ/CL Rwy 30	MIRL Rwy 15-33	HIRL Rwys 12-30, 10L-28R, 10R-28L
FAF to MAP 6.1 NM			
Knots	60	90	120 150 180
Min:Sec	6:06	4:04	3:03 2:26 2:02



CATEGORY	A	B	C	D
S-ILS 30	209/18 200 (200-½)			
S-LOC 30	500/24	491 (500-½)	500/50	491 (500-1)
<b>C</b> CIRCLING	560-1	551 (600-1)	660-1¾ 651 (700-1¾)	1400-3 1391 (1400-3)