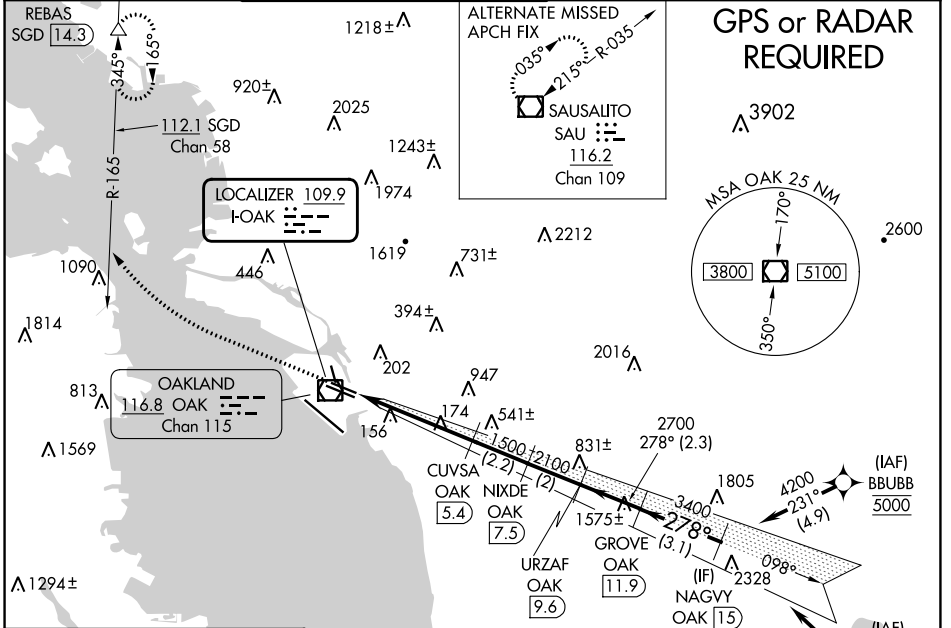


LOC I-OAK 109.9	APP CRS 278°	Rwy Idg TDZE Apt Elev	28R 5457 7 9	28L 6213 9 9
---------------------------	------------------------	-----------------------------	--	--

ILS or LOC/DME RWY 28R

METRO OAKLAND INTL (OAK)

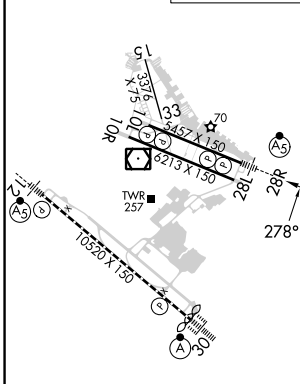
▽ DME required. DME from OAK VOR/DME. Simultaneous reception of I-OAK and OAK DME required. * RVR 1800 authorized with use of FD or AP or HUD to DA.	AS MALSR Rwy 28R	MISSED APPROACH: Climb to 1900 then climbing right turn to 3000 on heading 340° and SGD VORTAC R-165 to REBAS/SGD 14.3 DME and hold.			
		D-ATIS 133.775	NORCAL APP CON 125.35 263.15	OAKLAND TOWER 118.3 291.65 (Rwys 10L/R-28L/R, 15-33) 127.2 256.9 (Rwy 12-30)	GND CON 121.9 (Rwys 10L/R-28L/R, 15-33) 121.75 (Rwy 12-30)



SW-2, 11 JUL 2024 to 08 AUG 2024

SW-2, 11 JUL 2024 to 08 AUG 2024

ELEV 9	D TDZE 28R 7
	TDZE 28L 9



REIL Rwy 10R
 TDZ/CL Rwy 30
 MIRL Rwy 15-33
 HIRL Rwys 12-30, 10L-28R, 10R-28L

CATEGORY	A	B	C	D
*S-ILS 28R	207/24		200 (200-½)	
S-LOC 28R	440/24		433 (500-½)	
SIDESTEP 28L	440/55	431 (500-1)	440-1½	431 (500-1½)
C CIRCLING	560-1	551 (600-1)	660-1¾ 651 (700-1¾)	1400-3 1391 (1400-3)