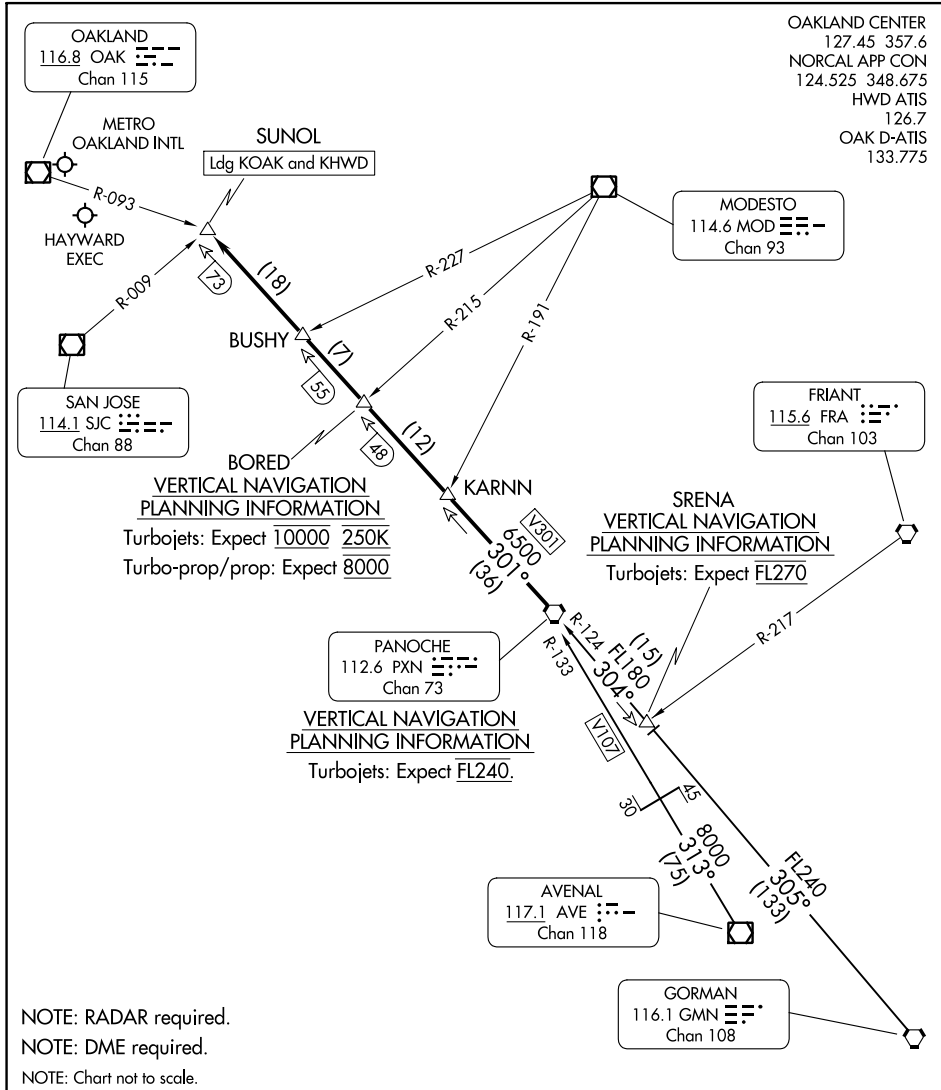


# PANOCHÉ SIX ARRIVAL



SW-2, 11 JUL 2024 to 08 AUG 2024

SW-2, 11 JUL 2024 to 08 AUG 2024

### ARRIVAL ROUTE DESCRIPTION

**AVENAL TRANSITION (AVE.PXN6):** From over AVE VOR/DME on AVE R-313 and PXN R-133 to PXN VORTAC. Thence. . .

**GORMAN TRANSITION (GMN.PXN6):** From over GMN VORTAC on GMN R-305 and PXN R-124 to SRENA, then on PXN R-124 to PXN VORTAC. Thence. . .

. . . From over PXN VORTAC on PXN R-301 to SUNOL. Expect RADAR vectors to final approach course.

# PANOCHÉ SIX ARRIVAL