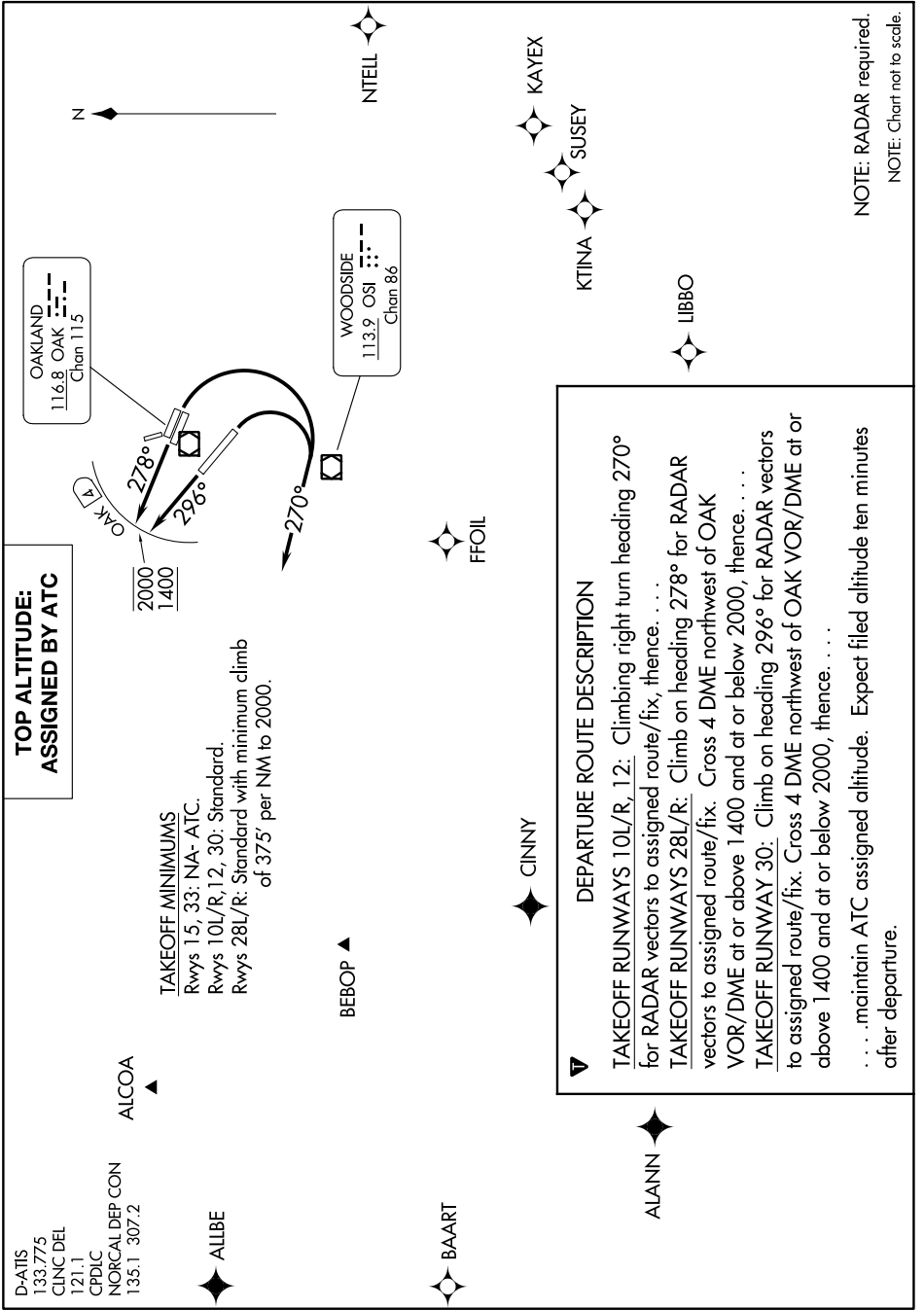


QUAKE TWO DEPARTURE

AL-294 (FAA)

METRO OAKLAND INTL (OAK)
OAKLAND, CALIFORNIA

SW-2, 11 JUL 2024 to 08 AUG 2024



**TOP ALTITUDE:
ASSIGNED BY ATC**

TAKEOFF MINIMUMS
 Rwys 15, 33: NA- ATC.
 Rwys 10L/R, 12, 30: Standard.
 Rwys 28L/R: Standard with minimum climb
 of 375' per NM to 2000.

DEPARTURE ROUTE DESCRIPTION

TAKEOFF RUNWAYS 10L/R, 12: Climbing right turn heading 270° for RADAR vectors to assigned route/fix, thence. . . .

TAKEOFF RUNWAYS 28L/R: Climb on heading 278° for RADAR vectors to assigned route/fix. Cross 4 DME northwest of OAK VOR/DME at or above 1400 and at or below 2000, thence. . . .

TAKEOFF RUNWAY 30: Climb on heading 296° for RADAR vectors to assigned route/fix. Cross 4 DME northwest of OAK VOR/DME at or above 1400 and at or below 2000, thence. . . .

. . . maintain ATC assigned altitude. Expect filed altitude ten minutes after departure.

NOTE: RADAR required.
NOTE: Chart not to scale.

QUAKE TWO DEPARTURE

SW-2, 11 JUL 2024 to 08 AUG 2024