

APP CRS	Rwy Idg	<b>10000</b>
<b>116°</b>	TDZE	<b>9</b>
	Apt Elev	<b>9</b>

# RNAV (RNP) Z RWY 12

METRO OAKLAND INTL (OAK)

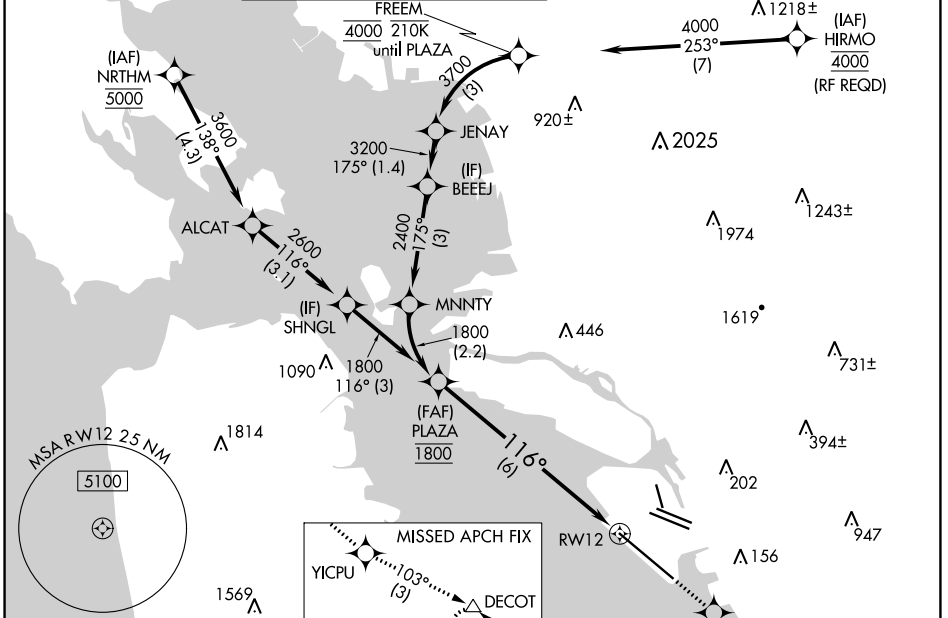
**RNP AR APCH.**

▼ For uncompensated Baro-VNAV systems, procedure NA below 0°C or above 54°C. For inop ALS increase RNP 0.15 visibility all Cats to RVR 4500, RNP 0.30 visibility all Cats to RVR 5500.

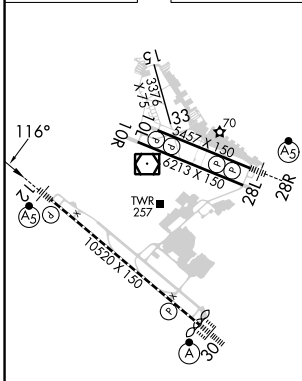
**MALSRR**

MISSED APPROACH: Climb direct HISIS to cross HISIS at or below 1600 then climb to 5400 on track 116° to YICPU and on track 103° to DECOT and hold, continue climb-in-hold to 5400.

D-ATIS	NORCAL APP CON	OAKLAND TOWER		GND CON	CLNC DEL	CPDLC
<b>133.775</b>	<b>125.35 263.15</b>	<b>118.3 291.65</b>	(Rwys 10L/R-28L/R, 15-33)	<b>121.9</b>	<b>121.1</b>	
		<b>127.2 256.9</b>	(Rwy 12-30)	<b>121.75</b>		
			(Rwy 12-30)			



ELEV	<b>9</b>	TDZE	<b>9</b>
------	----------	------	----------



REIL Rwy 10R  
 TDZ/CL Rwy 30  
 MIRL Rwy 15-33  
 HIRL Rwys 12-30, 10L-28R, 10R-28L

See planview for multiple IF locations.

↑	HISIS 1600	5400 tr 116°	YICPU tr 103°	DECOT △
---	---------------	-----------------	------------------	------------

VGSI and RNAV glidepath not coincident (VGSI Angle 2.75/TCH 70).

PLAZA 1800

GP 2.75° TCH 55

6 NM

CATEGORY	A	B	C	D
RNP 0.15 DA		289/24	280 (300-½)	
RNP 0.30 DA		386/35	377 (400-⅙)	

**AUTHORIZATION REQUIRED**

SW-2, 11 JUL 2024 to 08 AUG 2024

SW-2, 11 JUL 2024 to 08 AUG 2024