

APP CRS	Rwy Idg	10000
296°	TDZE	9
	Apt Elev	9

RNAV (RNP) Z RWY 30

METRO OAKLAND INTL (OAK)

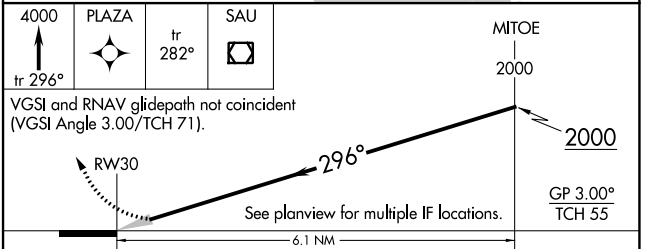
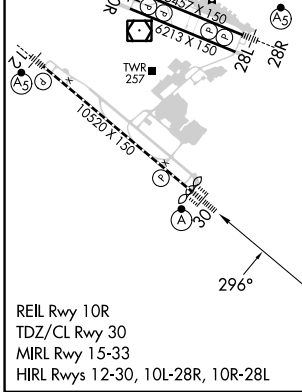
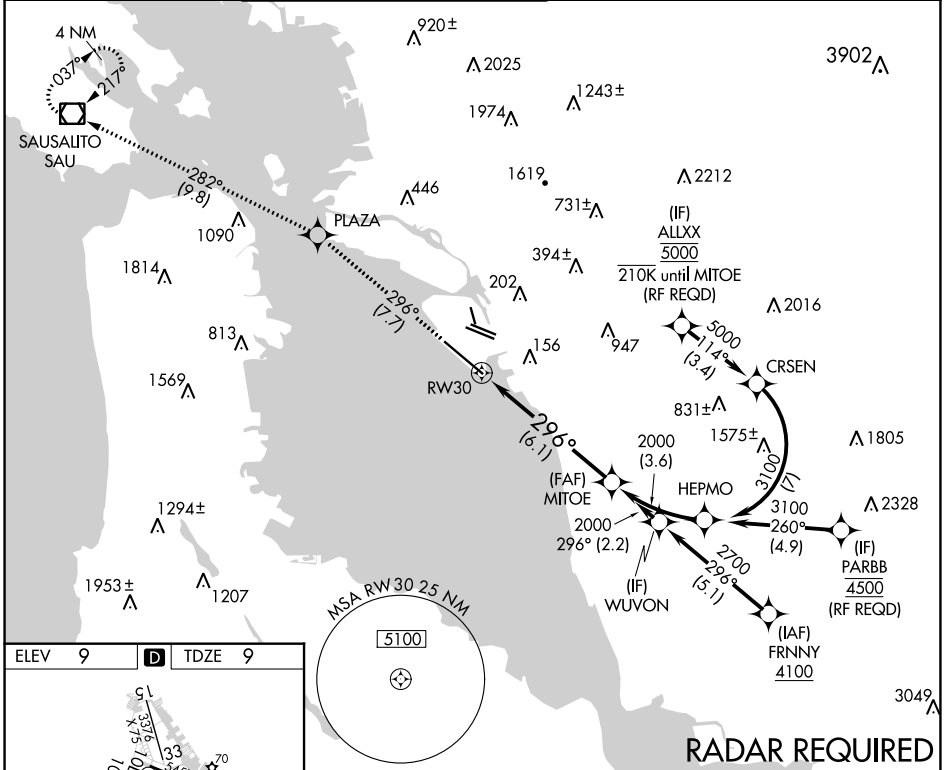
GPS required. For uncompensated Baro-VNAV systems, procedure NA below 1°C (34°F) or above 54°C (130°F). For inop ALS increase RNP 0.11 visibility all Cats to RVR 4000.

OAKLAND TOWER
118.3 291.65 (Rwys 10L/R-28L/R, 15-33)
127.2 256.9 (Rwy 12-30)

ALSF-2

MISSED APPROACH: Climb to 4000 on track 296° to PLAZA and on track 282° to SAU VOR/DME and hold, continue climb-in-hold to 4000.

GND CON 121.9 (Rwys 10L/R-28L/R, 15-33) 121.75 (Rwy 12-30)	CLNC DEL 121.1	CPDLC
---	---------------------------------	-------



CATEGORY	A	B	C	D
RNP 0.11 DA		267/24	258 (300-½)	
RNP 0.30 DA		317/24	308 (400-½)	

AUTHORIZATION REQUIRED

SW-2, 11 JUL 2024 to 08 AUG 2024

SW-2, 11 JUL 2024 to 08 AUG 2024