

OKLAHOMA CITY, OKLAHOMA

# HI-ILS or LOC/DME Y RWY 18

LOC I-FRJ <b>111.3</b>	APCH CRS <b>177°</b>	Rwy ldg <b>11,100</b> TDZE <b>1267</b> Arprt Elev <b>1291</b>
---------------------------	-------------------------	---

[USAF]

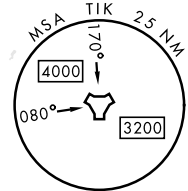
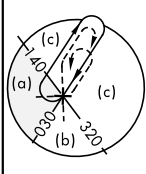
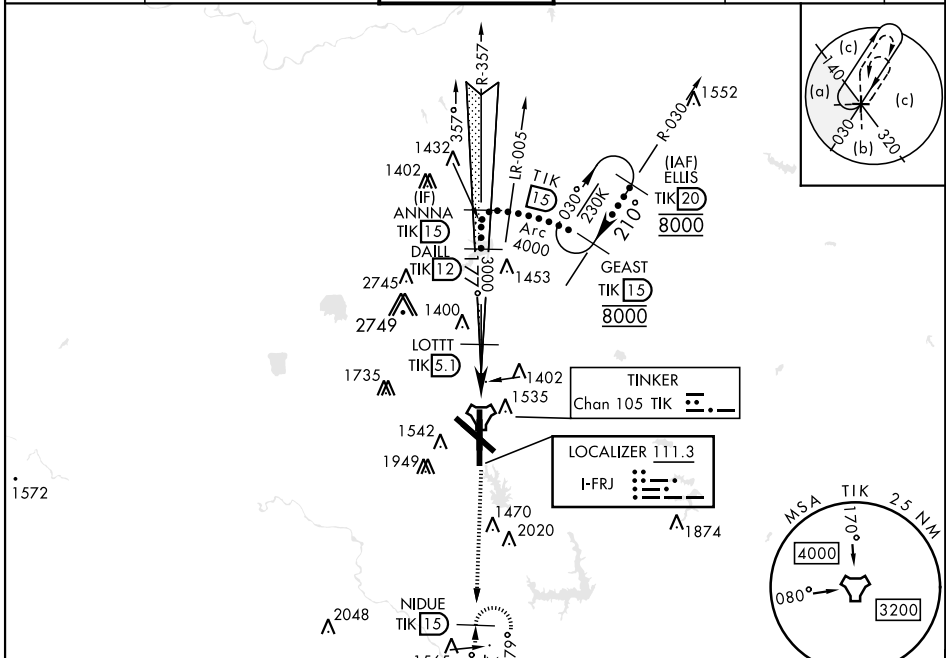
TINKER AFB (KTIK)

▼ \* When ALS inop, increase CAT CDE RVR to 55 and vis to 1 mile.  
 \*\* CAT E circling NA in sector S of Rwy 13-31 and W of RWY 18. Circling NA to Rwy 18.

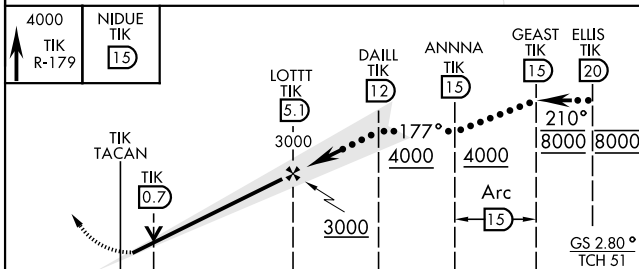


MISSED APPROACH: Climb to 4000 on TIK TACAN R-179 to NIDUE and hold.

ATIS ★ <b>270.1</b>	OKE CITY APP CON <b>124.2 336.4</b>	TOWER <b>124.45 251.05</b>	GND CON <b>121.8 275.8</b>	CLNC DEL <b>119.7 335.8</b>	ASR
------------------------	--	-------------------------------	-------------------------------	--------------------------------	-----



Localizer unusable within 0.4 NM from threshold.  
 Localizer NA beyond 15° right of course.  
 EMERG SAFE ALT 100 NM 4700



ELEV 1291	TDZE 1267
HIRL all rwys	
FAF to MAP 4.8 NM	
Knots	120 140 160 180 200
Min:Sec	2:24 2:03 1:48 1:36 1:26

OKLAHOMA CITY, OKLAHOMA

35°25'N-97°23'W

TINKER AFB (KTIK)

Amtd 6 13JUN24

# HI-ILS or LOC/DME Y RWY 18

SC-1, 11 JUL 2024 to 08 AUG 2024

SC-1, 11 JUL 2024 to 08 AUG 2024