

OKLAHOMA CITY, OKLAHOMA

RNAV (GPS) RWY 36

APCH CRS	Rwy Idg	11,100
356°	TDZE	1291
	Arprt Elev	1291

(USAF)

TINKER AFB (KTIK)

⚠ * Cat E Circling not authorized in sector S of Rwy 13-31 and W of Rwy 18-36.

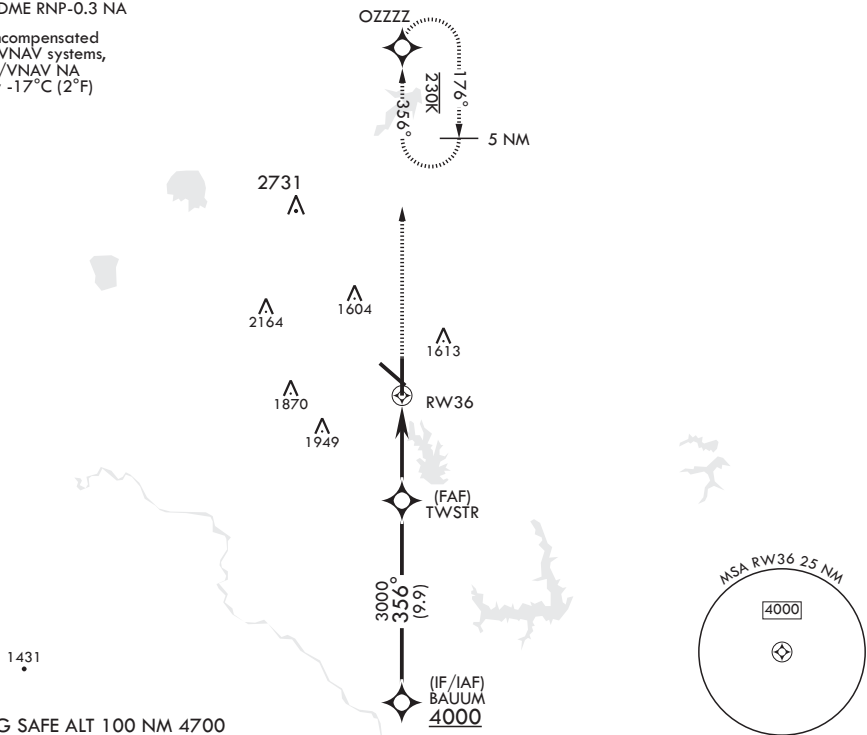


MISSED APPROACH: Climb to 4000 direct OZZZZ waypoint and hold.

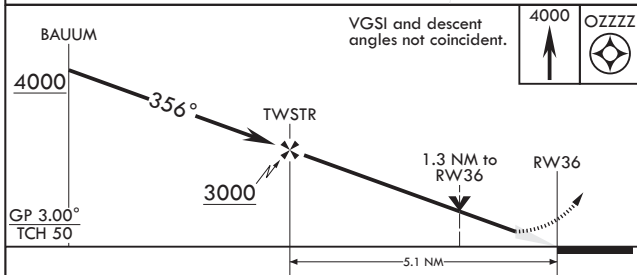
ATIS ★	OKE CITY APP CON/DEP CON	TOWER	GND CON	CLNC DEL	ASR
270.1	124.2 336.4	124.45 251.05	121.8 275.8	119.7 335.8	

DME/DME RNP-0.3 NA

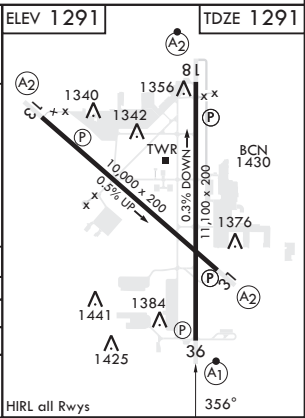
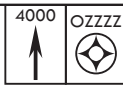
For uncompensated Baro-VNAV systems, LNAV/VNAV NA below -17°C (2°F)



EMERG SAFE ALT 100 NM 4700



VGSI and descent angles not coincident.



CATEGORY	A	B	C	D	E
LNAV/VNAV DA	1739/53		448		(500-1)
LNAV MDA	1740/24	449 (500-½)	1740/45	449	(500-¾)
C CIRCLING*	1820-1 529 (600-1)		2000-2 709 (800-2)	2040-2½ 749 (800-2½)	2040-2¾ 749 (800-2¾)

HIRL all Rwys

OKLAHOMA CITY, OKLAHOMA

35°25'N - 97°23'W

TINKER AFB (KTIK)

Amdt 1 13JUN24

RNAV (GPS) RWY 36

SC-1, 11 JUL 2024 to 08 AUG 2024

SC-1, 11 JUL 2024 to 08 AUG 2024