

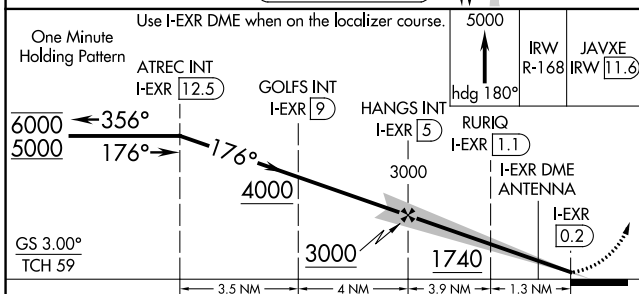
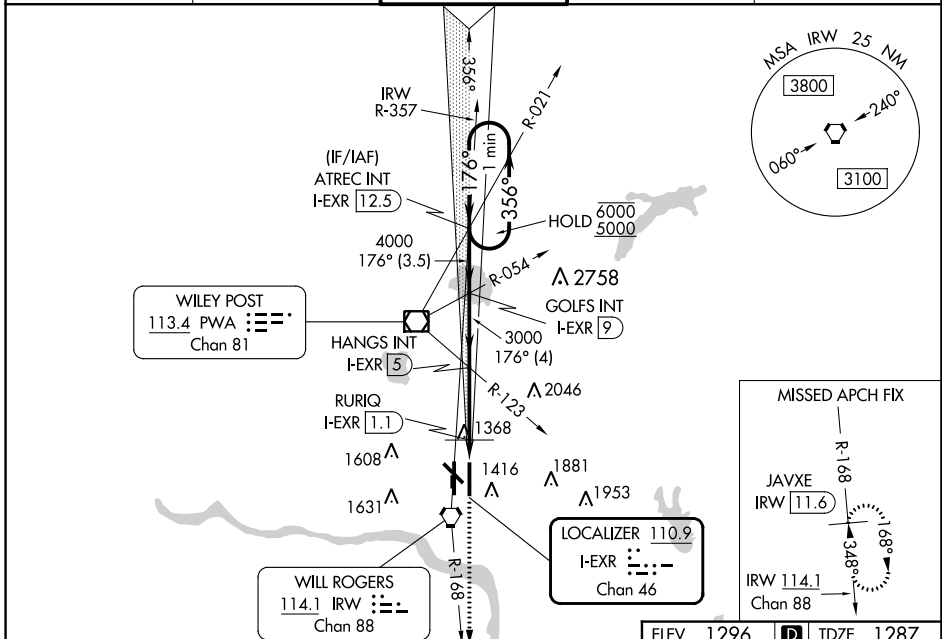
LOC/DME I-EXR 110.9 Chan 46	APP CRS 176°	Rwy Idg TDZE Apt Elev	9802 1287 1296
--	------------------------	-----------------------------	---

ILS or LOC RWY 17L

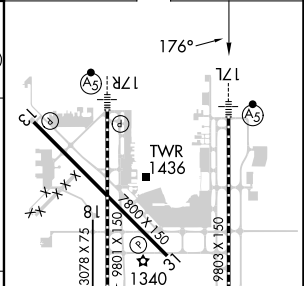
WILL ROGERS WORLD (OKC)

DME required. RADAR required for procedure entry.		MALSR 	MISSED APPROACH: Climb to 5000 on heading 180° and on IRW VORTAC R-168 to JAVXE/IRW 11.6 DME and hold, continue climb-in-hold to 5000.
<p>Simultaneous approach authorized. Inop table does not apply to S-ILS 17L. For inop ALS, increase S-LOC 17L visibilities Cats A and B to RVR 5500, and Cat E to 1 3/8 SM. RURIQ Fix Minimums: For inop ALS, increase S-LOC 17L visibilities Cats A and B to RVR 5500, and Cats C, D, and E to RVR 6000. Autopilot coupled approach NA below 1480.</p>			

D-ATIS 125.85	OKE CITY APP CON 124.6 266.8	ROGERS TOWER 119.35 269.45	GND CON 121.9 348.6	CLNC DEL 124.35
-------------------------	--	--------------------------------------	-------------------------------	---------------------------



ELEV 1296	D	TDZE 1287
-----------	----------	-----------



CATEGORY	A	B	C	D	E
S-ILS 17L	1487/40 200 (200-3/4)				
S-LOC 17L	1740/40	453 (500-3/4)	1740/45	453 (500-3/4)	
CIRCLING	1740-1	1760-1	1960-1 3/4	2000-2 1/4	2240-3
	444 (500-1)	464 (500-1)	664 (700-1 3/4)	704 (800-2 1/4)	944 (1000-3)
RURIQ FIX MINIMUMS					
S-LOC 17L	1680/40 393 (400-3/4)				
CIRCLING	1740-1	1760-1	1960-1 3/4	2000-2 1/4	2240-3
	444 (500-1)	464 (500-1)	664 (700-1 3/4)	704 (800-2 1/4)	944 (1000-3)

MRL Rwy 13-31
TDZ/CL Rwy 35R
HIRL Rwys 17L-35R and 17R-35L
REIL Rwys 13 and 31

SC-1, 11 JUL 2024 to 08 AUG 2024

SC-1, 11 JUL 2024 to 08 AUG 2024