

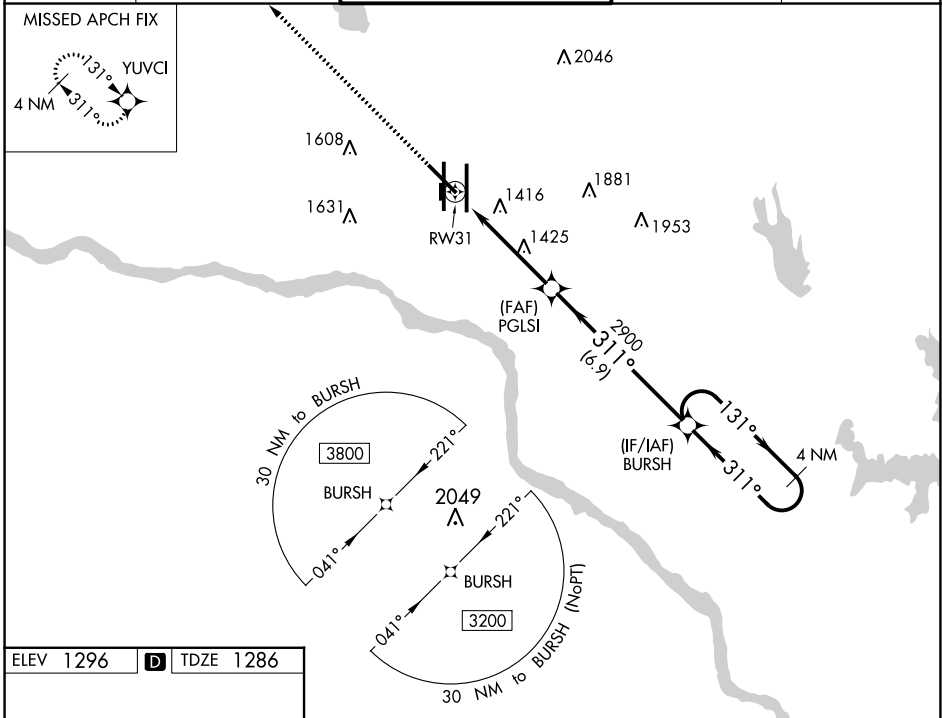
WAAS CH <b>50225</b> <b>W31A</b>	APP CRS <b>311°</b>	Rwy Idg TDZE Apt Elev	<b>7800</b> <b>1286</b> <b>1296</b>
--	------------------------	-----------------------------	---

# RNAV (GPS) RWY 31

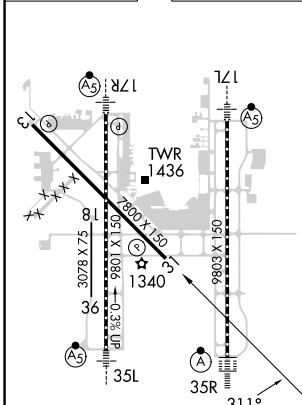
WILL ROGERS WORLD (OKC)

	DME/DME RNP-0.3 NA.	MISSED APPROACH: Climb to 3600 direct YUVCI and hold.		
--	---------------------	---	--	--

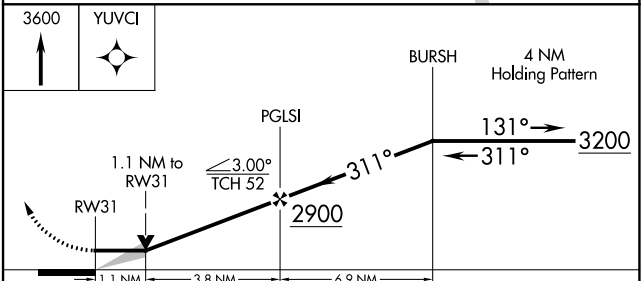
D-ATIS <b>125.85</b>	OKC CITY APP CON <b>124.6 266.8</b>	ROGERS TOWER <b>119.35 269.45</b>	GND CON <b>121.9 348.6</b>	CLNC DEL <b>124.35</b>
-------------------------	--	--------------------------------------	-------------------------------	---------------------------



ELEV 1296	<b>D</b>	TDZE 1286
-----------	----------	-----------



REIL Rwy 13 and 31  
TDZ/CL Rwy 35R  
MIRL Rwy 13-31  
HIRL Rwy 17L-35R and 17R-35L



CATEGORY	A	B	C	D
LP MDA	1680-1	394 (400-1)	1680-1½	394 (400-1½)
LNAV MDA	1700-1	414 (500-1)	1700-1½	414 (500-1½)
<b>C</b> CIRCLING	1740-1 444 (500-1)	1760-1 464 (500-1)	1960-1¾ 664 (700-1¾)	2000-2¼ 704 (800-2¼)

SC-1, 11 JUL 2024 to 08 AUG 2024

SC-1, 11 JUL 2024 to 08 AUG 2024