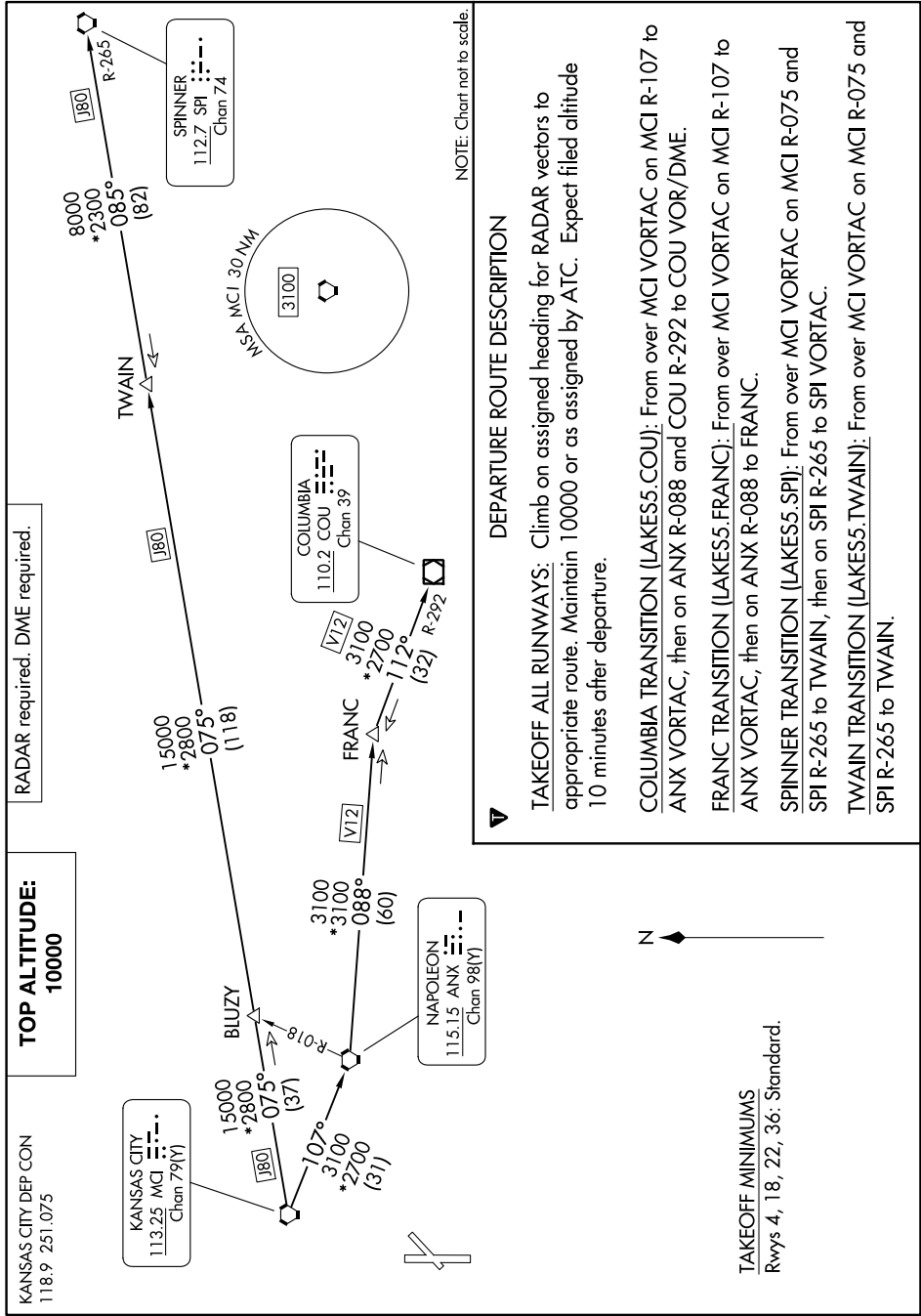


# LAKES FIVE DEPARTURE

NC-2, 11 JUL 2024 to 08 AUG 2024



NOTE: Chart not to scale.

## DEPARTURE ROUTE DESCRIPTION

**TAKEOFF ALL RUNWAYS:** Climb on assigned heading for RADAR vectors to appropriate route. Maintain 10000 or as assigned by ATC. Expect filed altitude 10 minutes after departure.

**COLUMBIA TRANSITION (LAKES5.COUI):** From over MCI VORTAC on MCI R-107 to ANX VORTAC, then on ANX R-088 and COU R-292 to COU VOR/DME.

**FRANC TRANSITION (LAKES5.FRANC):** From over MCI VORTAC on MCI R-107 to ANX VORTAC, then on ANX R-088 to FRANC.

**SPINNER TRANSITION (LAKES5.SPI):** From over MCI VORTAC on MCI R-075 and SPI R-265 to TWAIN, then on SPI R-265 to SPI VORTAC.

**TWAIN TRANSITION (LAKES5.TWAIN):** From over MCI VORTAC on MCI R-075 and SPI R-265 to TWAIN.

**TOP ALTITUDE:**  
10000

KANSAS CITY DEP CON  
118.9 251.075

KANSAS CITY  
113.25 MCI  
Chan 79(Y)

BLUZY  
15000  
\*2800  
075°  
(37)

FRANC  
3100  
\*3100  
088°  
(60)

NAPOLEON  
115.15 ANX  
Chan 98(Y)

COLUMBIA  
110.2 COU  
Chan 39

SPINNER  
112.7 SPI  
Chan 74

TAKEOFF MINIMUMS  
Rwys 4, 18, 22, 36: Standard.

NC-2, 11 JUL 2024 to 08 AUG 2024