

ROYAL ONE DEPARTURE

AL-302 (FAA)

NEW CENTURY AIRCENTER (IXD)

OLATHE, KANSAS

NC-2, 11 JUL 2024 to 08 AUG 2024

KANSAS CITY DEP CON
118.9 251.075

RADAR and DME required.

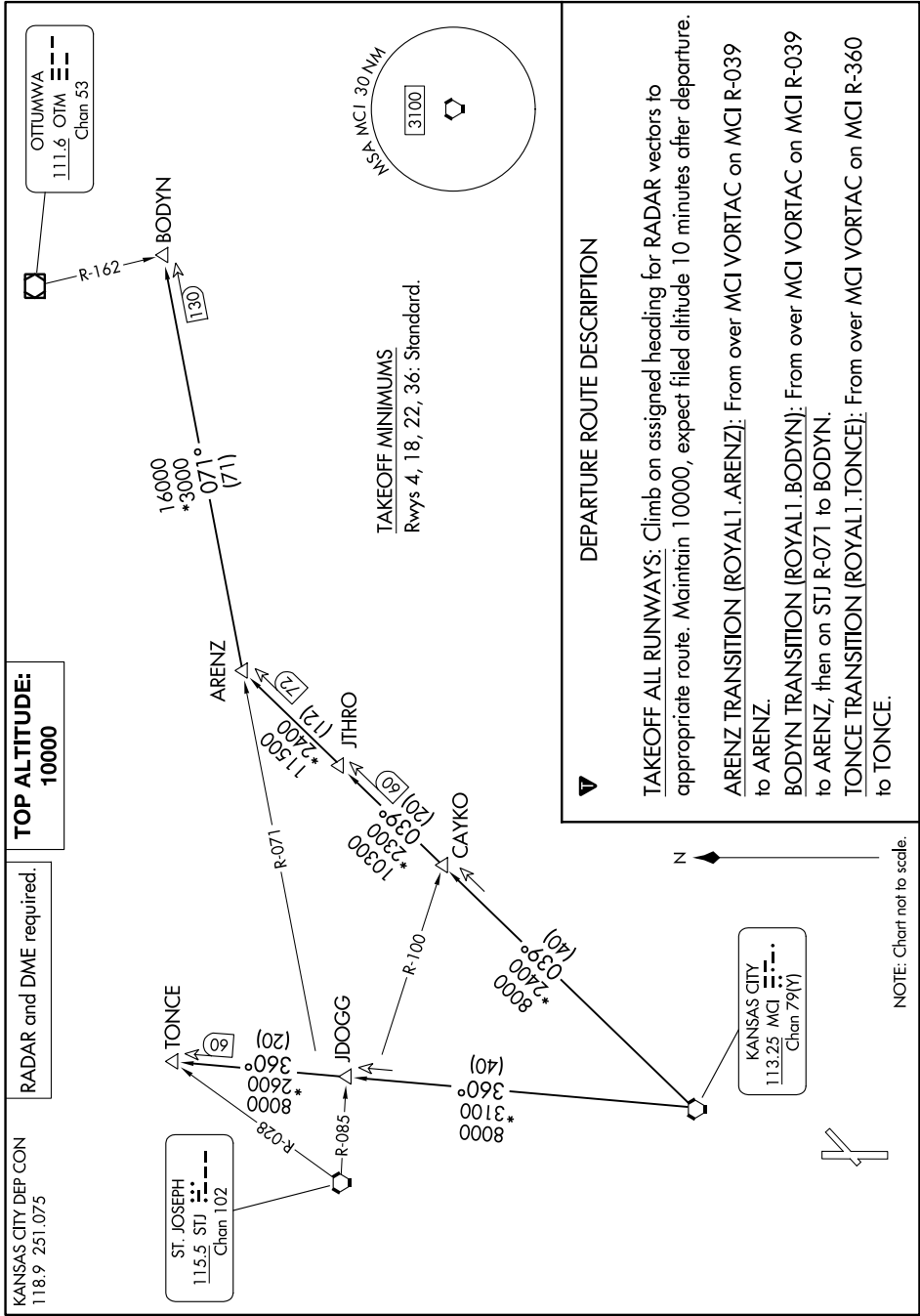
**TOP ALTITUDE:
10000**

OTTUMWA
111.6 OTM ---
Chan 53

ST. JOSEPH
115.5 STJ ---
Chan 102

KANSAS CITY
113.25 MCI ---
Chan 79(Y)

MSA MCI 30 NM
3100



DEPARTURE ROUTE DESCRIPTION

TAKEOFF ALL RUNWAYS: Climb on assigned heading for RADAR vectors to appropriate route. Maintain 10000, expect filed altitude 10 minutes after departure.

ARENZ TRANSITION (ROYAL1.ARENZ): From over MCI VORTAC on MCI R-039 to ARENZ.

BODYN TRANSITION (ROYAL1.BODYN): From over MCI VORTAC on MCI R-039 to ARENZ, then on STJ R-071 to BODYN.

TONCE TRANSITION (ROYAL1.TONCE): From over MCI VORTAC on MCI R-360 to TONCE.

NOTE: Chart not to scale.

NC-2, 11 JUL 2024 to 08 AUG 2024

ROYAL ONE DEPARTURE

OLATHE, KANSAS

NEW CENTURY AIRCENTER (IXD)