

LOC/DME I-EXO 109.35 Chan 30(Y)	APP CRS 253°	Rwy Idg TDZE Apt Elev	6004 113 113
--	------------------------	-----------------------------	---

ILS or LOC RWY 25

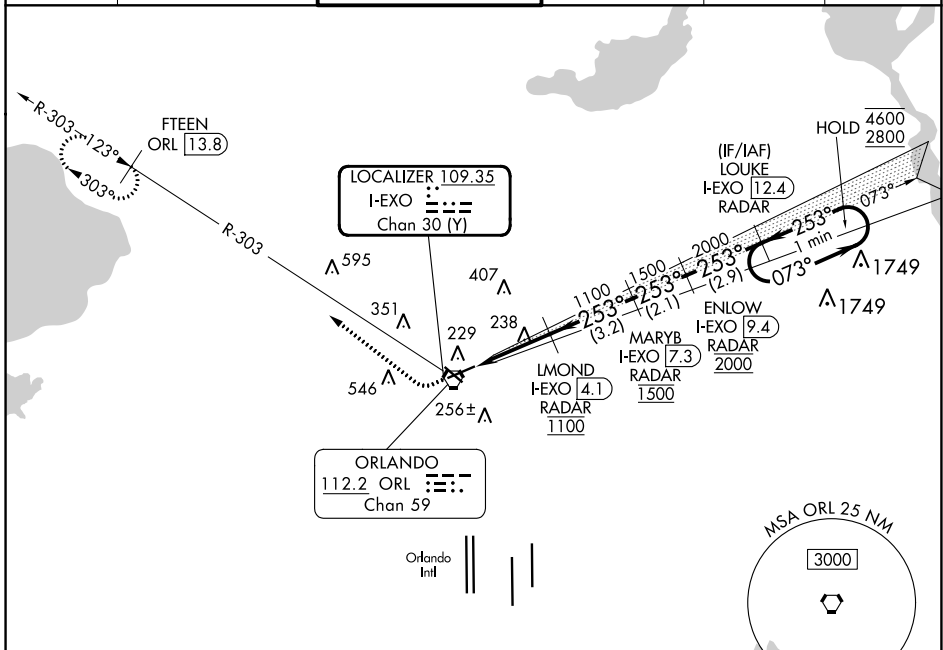
EXEC (ORL)

DME or RADAR required.

⚠ Circling Rwy 31 NA at night. In minimum visibility conditions, bright lights on highway 1/2 mile south of airport may be mistaken for runway lights.

MISSED APPROACH: Climb to 600 then climbing right turn to 1700 on heading 315° and on ORL VORTAC R-303 to FTEEN/ORL 13.8 DME and hold.

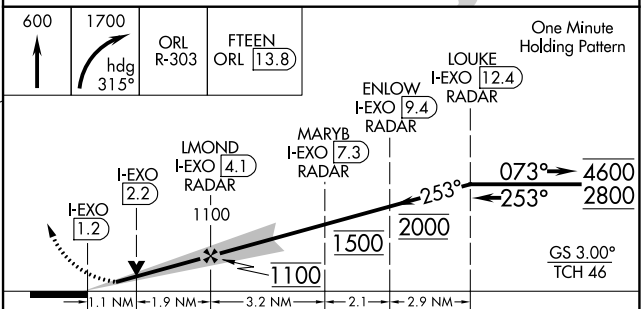
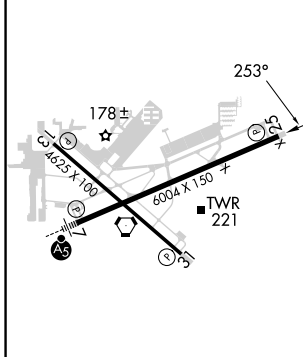
ATIS 127.25	ORLANDO APP CON 124.8 351.9	EXECUTIVE TOWER ★ 118.7(CTAF) 0 239.0	GND CON 121.4 239.0	CLNC DEL 128.45	UNICOM 122.95
-----------------------	---------------------------------------	---	-------------------------------	---------------------------	-------------------------



SE-3, 11 JUL 2024 to 08 AUG 2024

SE-3, 11 JUL 2024 to 08 AUG 2024

ELEV 113	D	TDZE 113
----------	----------	----------



REIL Rwys 13 and 31 HIRL Rwys 7-25 and 13-31	FAF to MAP 3 NM
Knots	60 90 120 150 180
Min:Sec	3:00 2:00 1:30 1:12 1:00
C CIRCLING	580-1 467 (500-1) 680-1 567 (600-1) 860-2 1/4 747 (800-2 1/4) 860-2 1/2 747 (800-2 1/2)