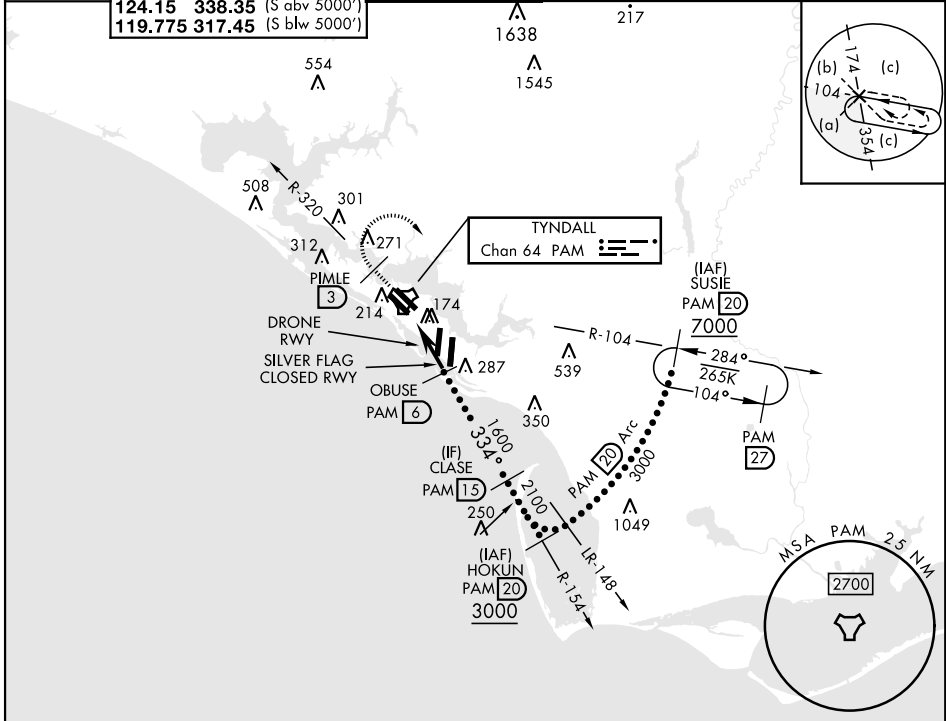


HI-TACAN Y RWY 32L

TACAN PAM Chan 64	APCH CRS 334°	Rwy Ldg TDZE 17 Arpt Elev 17	[USAF]	TYNDALL AFB (KPAM)
-----------------------------	-------------------------	--	--------	--------------------

MISSED APPROACH: Track outbound PAM TACAN R-320 to 3 DME (PIMLE), then turn right to join PAM R-104 to 20 DME (SUSIE) and hold. Maintain 3000.

ATIS ★ 254.4	APP CON 125.2 392.1 (N abv 5000') 120.825 379.3 (N blw 5000') 124.15 338.35 (S abv 5000') 119.775 317.45 (S blw 5000')	TOWER ★ 133.95 263.15	GND CON 121.9 259.3	CLNC DEL 118.05 348.7	ASR/PAR
------------------------	--	---------------------------------	-------------------------------	---------------------------------	---------



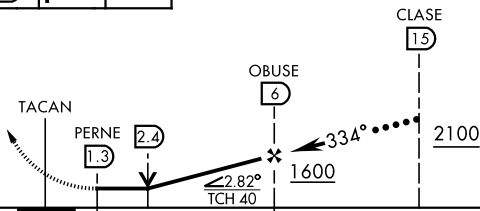
SE-3, 11 JUL 2024 to 08 AUG 2024

SE-3, 11 JUL 2024 to 08 AUG 2024

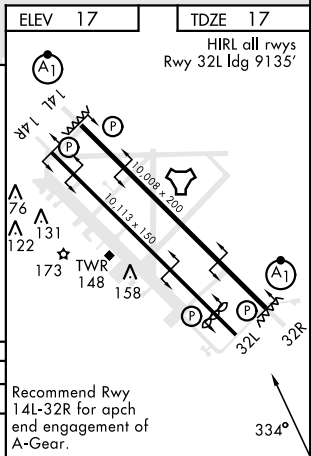
EMERG SAFE ALT 100 NM 3300

3000 PAM R-320	PIMLE PAM 3	SUSIE PAM 20
-------------------	----------------	-----------------

VGSI and descent angles not coincident (VGSI Angle 2.50/TCH 40).



CATEGORY	C	D	E
S-32L	540-1 1/2	480-1 3/8	463 (500-1 1/8)
CIRCLING	523 (600-1 1/2)	580-2 563 (600-2)	620-2 1/4 603 (700-2 1/4)



HI-TACAN Y RWY 32L