

PANAMA CITY, FLORIDA

RNAV (GPS) RWY 14L

WAAS CH 71271 W14A	APCH CRS 138°	Rwy ldg 10,008	TDZE 14
		Arpt Elev 17	

- (USAF)

TYNDALL AFB (KPAM)

RNP APCH	ALSF-1	MISSED APPROACH: Climb to 600 then climbing left turn to 3000 direct NENCY and hold.
----------	--------	--

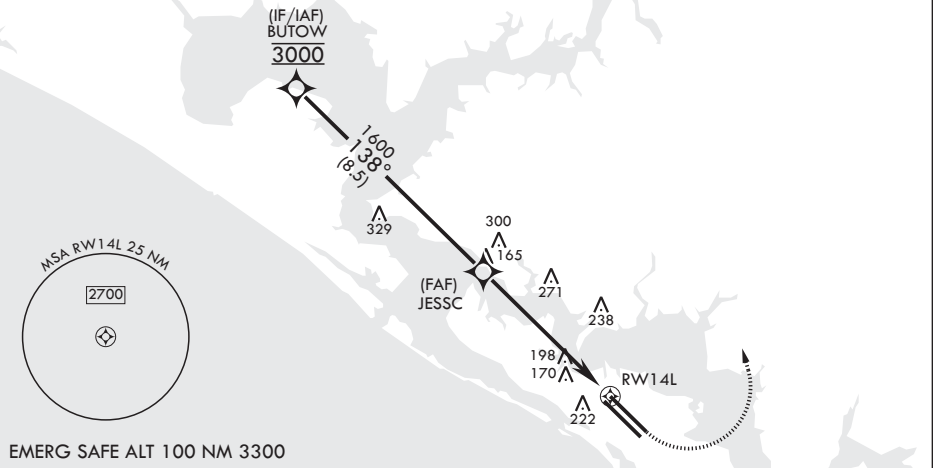
* When ALS inop increase RVR to 40, vis to 3/4 mile.
 ** When ALS inop increase RVR to 45, vis to 7/8 mile.

ATIS* 254.4	APP CON/DEP CON 119.775 317.45 BLW 5000' 124.15 338.35 ABV 5000'	TOWER* 133.95 263.15	GND CON 121.9 259.3	CLNC DEL 118.05 348.7	ASR/PAR
----------------	--	-------------------------	------------------------	--------------------------	---------

*** When ALS inop increase CAT AB RVR to 55, vis to 1 mile; CAT CDE vis to 1 3/8 miles.

For uncompensated Baro-VNAV systems, Procedure NA below 15°C (59°F) or above 54°C (130°F).

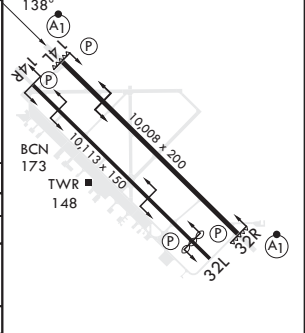
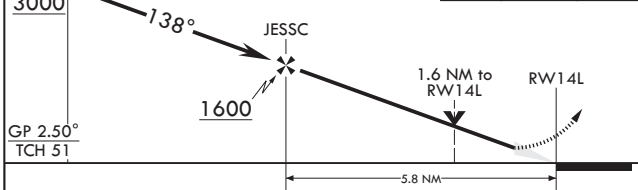
Average Cold Temperature based on standard -30.00°C ISA deviation.



SE-3, 11 JUL 2024 to 08 AUG 2024

SE-3, 11 JUL 2024 to 08 AUG 2024

BUTOW	600	3000	NENCY	ELEV 17	TDZE 14
3000					Rwy 32L ldg 9135'



CATEGORY	A	B	C	D	E
LPV DA*	214/24		200	(200-½)	
LNAV/VNAV DA**	276/24 262 (300-½)	287/24 273 (300-½)	295/24 281 (300-½)	306/24 292 (300-½)	
LNAV MDA***	500/24 486 (500-½)		500/50	486	(500-1)
C CIRCLING	540-1 523 (600-1)		540-1½ 523 (600-½)	580-2 563 (600-2)	620-2¼ 603 (700-2¼)

HIRL all Rwy's
Recommend Rwy 14L-32R for
apch end engagement of A-Gear.

PANAMA CITY, FLORIDA

30°04'N - 85°34'W

TYNDALL AFB (KPAM)

Amdt 4 20MAY21

RNAV (GPS) RWY 14L