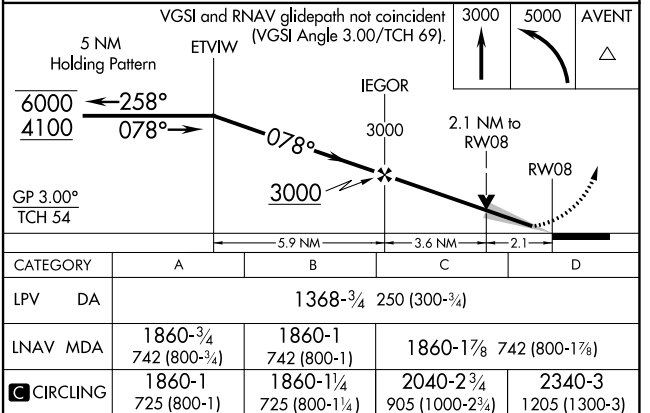
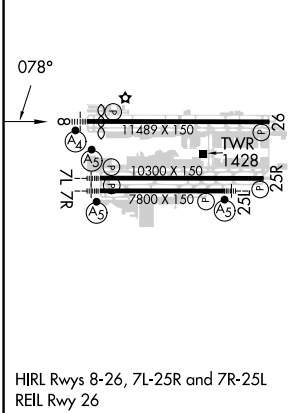
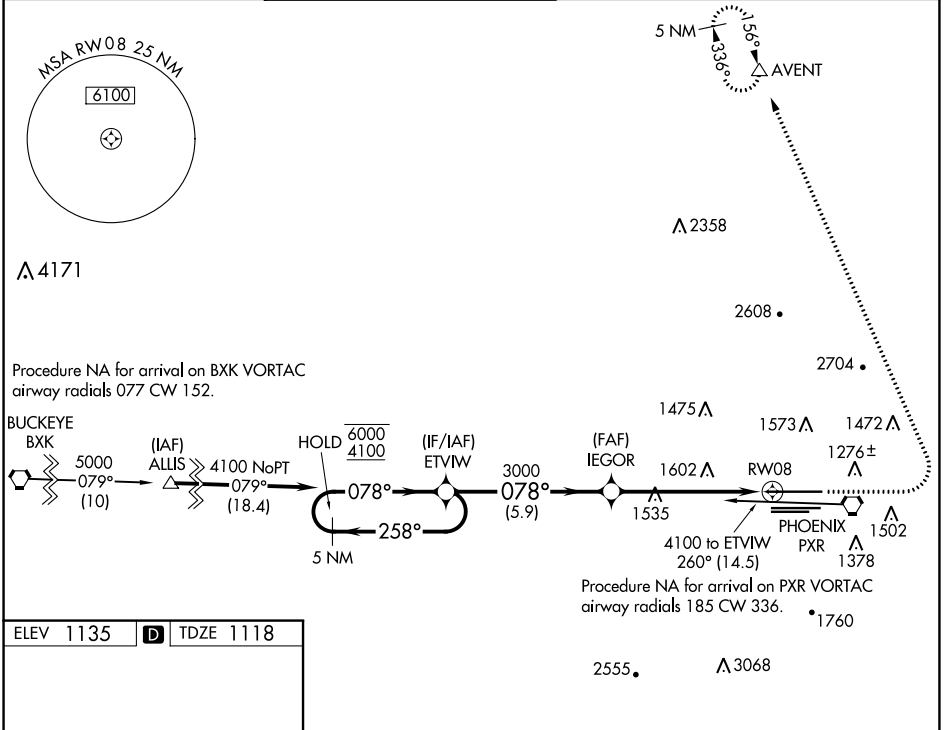


WAAS CH 86611 W08A	APP CRS 078°	Rwy Idg 10591 TDZE 1118 Apt Elev 1135
--	------------------------	--

RNAV (GPS) Y RWY 8

PHOENIX SKY HARBOR INTL (PHX)

RNP APCH - GPS.		MALSF	MISSED APPROACH: Climb to 3000 then climbing left turn to 5000 direct AVENT and hold.		
<p>⚠ Simultaneous approach authorized. LNAV procedure NA during simultaneous operations. Inop cats does not apply to LPV all Cats. For inop ALS, increase LNAV Cats C and D visibility to 2 SM.</p>					
D-ATIS 127.575	PHOENIX APP CON 128.65 353.9	PHOENIX TOWER 118.7 278.8 (Rwy 8-26) 120.9 254.3 (Rwy 7L-25R, 7R-25L)	GND CON 119.75 269.2 (N) 132.55 269.2 (S)	CLNC DEL 118.1 269.2	CPDLC



SW-4, 11 JUL 2024 to 08 AUG 2024

SW-4, 11 JUL 2024 to 08 AUG 2024