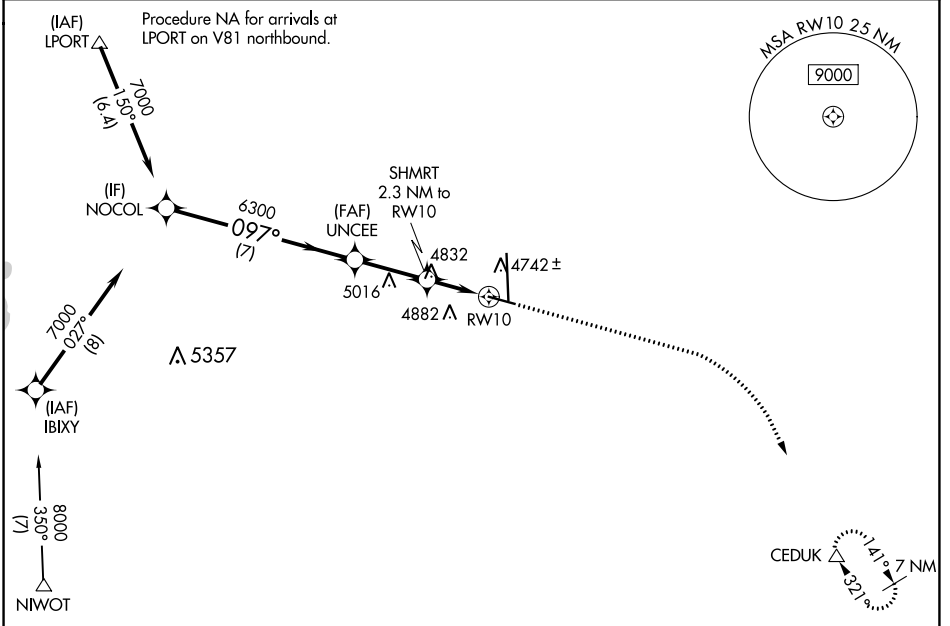


WAAS CH 62900 W10A	APP CRS 097°	Rwy Idg TDZE Apt Elev	5801 4661 4697
---------------------------------	------------------------	-----------------------------	---

RNAV (GPS) RWY 10

GREELEY-WELD COUNTY (GXY)

RNP APCH.		MISSED APPROACH: Climb to 5400 then climbing right turn to 7000 direct CEDUK and hold.	
AWOS-3PT 135.175	DENVER APP CON 134.85 251.125	CLNC DEL 126.65	UNICOM 122.8 (CTAF) 0

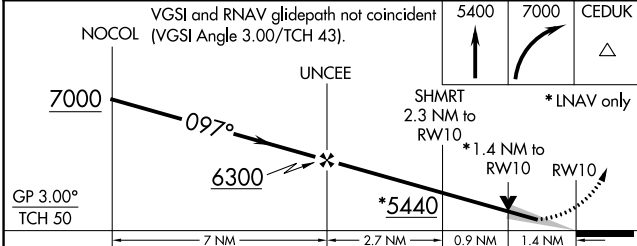


SW-1, 11 JUL 2024 to 08 AUG 2024

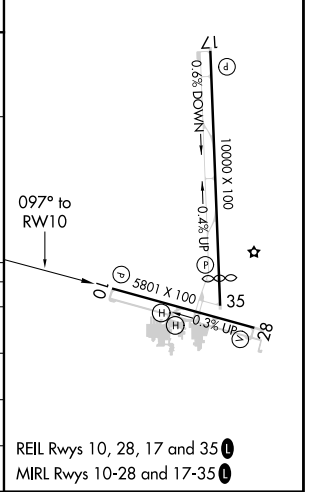
SW-1, 11 JUL 2024 to 08 AUG 2024

Procedure NA for arrivals at NIWOT on V575 southeast bound and V220 southwest bound.

ELEV 4697	TDZE 4661
-----------	-----------



CATEGORY	A	B	C	D
LPV DA		4911-3/4	250 (300-3/4)	
LNAV/VNAV DA		4920-3/4	259 (300-3/4)	
LNAV MDA	5140-1	479 (500-1)	5140-13/8	479 (500-13/8)
CIRCLING	5140-1 443 (500-1)	5200-1 503 (600-1)	5200-1 1/2 503 (600-1 1/2)	5380-2 1/4 683 (700-2 1/4)



REIL Rwy 10, 28, 17 and 35
MIRL Rwy 10-28 and 17-35