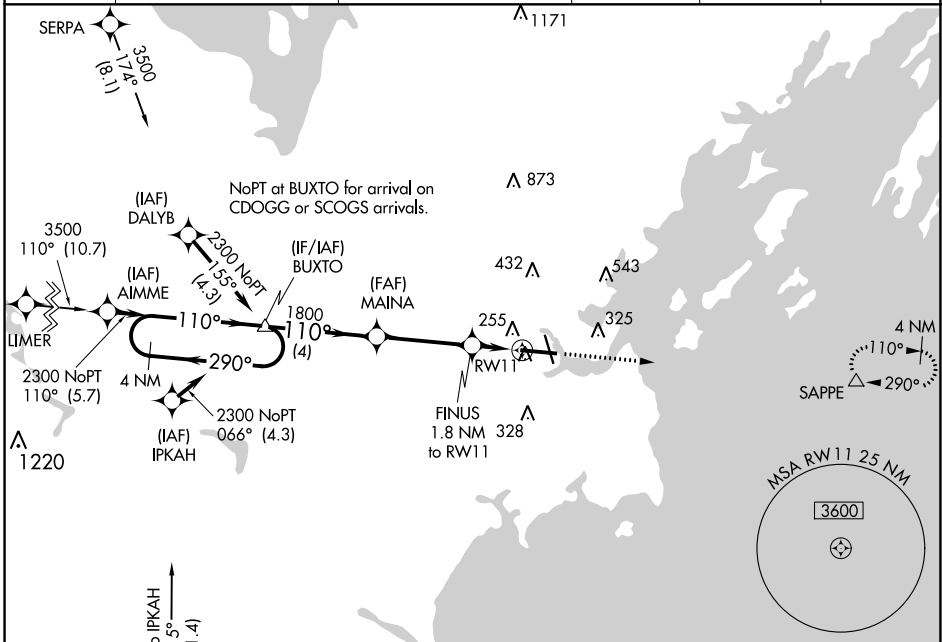


WAAS CH 70306 W11A	APP CRS 110°	Rwy ldg TDZE Apt Elev	7200 76 76
--	------------------------	-----------------------------	---------------------------------------

RNAV (GPS) RWY 11

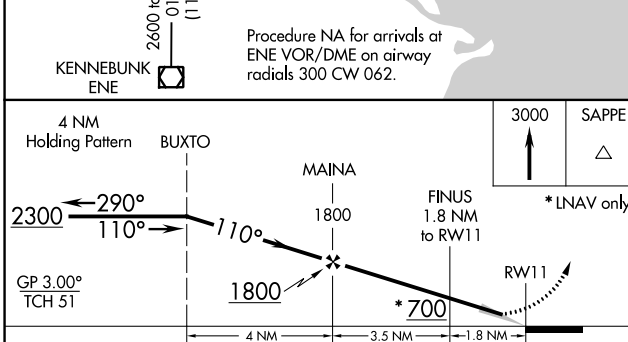
PORTLAND INTL JETPORT (P'WM)

RNP APCH - GPS.		ALSF-2	MISSED APPROACH: Climb to 3000 direct SAPPE and hold, continue climb-in-hold to 3000.		
<p>▼ For uncompensated Baro-VNAV systems, LNAV/VNAV NA below -18°C or above 54°C.</p>					
ATIS 119.05	PORTLAND APP CON ★ 119.75 269.35	PORTLAND TOWER ★ 120.9 0 (CTAF) 257.8	GND CON 121.9	CLNC DEL 121.9	UNICOM 122.95

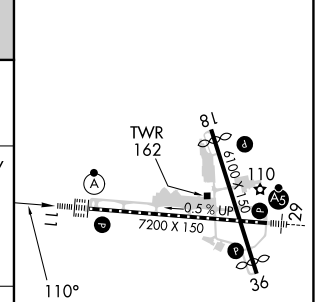


NE-1, 11 JUL 2024 to 08 AUG 2024

NE-1, 11 JUL 2024 to 08 AUG 2024



ELEV 76	D	TDZE 76
---------	----------	---------



CATEGORY	A	B	C	D
LPV DA		276/18	200 (200-½)	
LNAV/VNAV DA		456/40	380 (400-¾)	
LNAV MDA	520/24	444 (500-½)	520/45	444 (500-¾)
C CIRCLING	620-1 544 (600-1)	640-1 564 (600-1)	740-1¾ 664 (700-1¾)	860-2½ 784 (800-2½)

- TDZ/CL Rwy 11 **0**
- MIRL Rwy 18-36 **0**
- HIRL Rwy 11-29 **0**
- REIL Rwy 18 and 36 **0**