


(HELNS.HELNS6) 24025

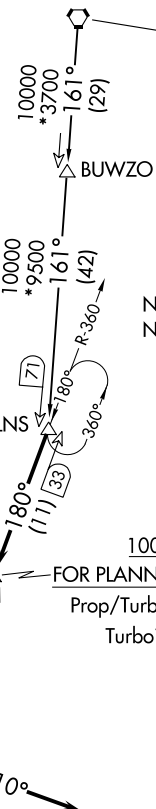
HELNS SIX ARRIVAL

AL-330 (FAA)

PORTLAND, OREGON

PORTLAND APP CON
124.35 299.2
HIO ATIS
127.65
PDX D-ATIS
128.35 269.9

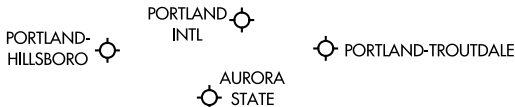
SEATTLE
116.8 SEA 
Chan 115



NOTE: DME and RADAR required.
NOTE: BUWZO Transition ATC assigned
only-do not file.

KRATR
10000 300K
FOR PLANNING PURPOSES ONLY:
Prop/Turboprop: Expect 10000
Turbojet: Expect 12000

BATTLE GROUND
116.6 BTG 
Chan 113
7000
Ldg all airports



NOTE: Chart not to scale.

ARRIVAL ROUTE DESCRIPTION

BUWZO TRANSITION (BUWZO.HELNS6): From over BUWZO via SEA R-161 to HELNS. Thence. . .

SEATTLE TRANSITION (SEA.HELNS6): From over SEA VORTAC via SEA R-161 to HELNS. Thence. . .

. . . from over HELNS on BTG VORTAC R-360 to cross KRATR at or above 10000, then as depicted to cross BTG VORTAC at or above 7000.

LANDING EAST: From BTG VORTAC heading 280°, expect RADAR vectors to final approach course.

LANDING WEST: From BTG VORTAC heading 110°, expect RADAR vectors to final approach course.

HELNS SIX ARRIVAL

(HELNS.HELNS6) 29MAR18

PORTLAND, OREGON

NW-1, 11 JUL 2024 to 08 AUG 2024

NW-1, 11 JUL 2024 to 08 AUG 2024