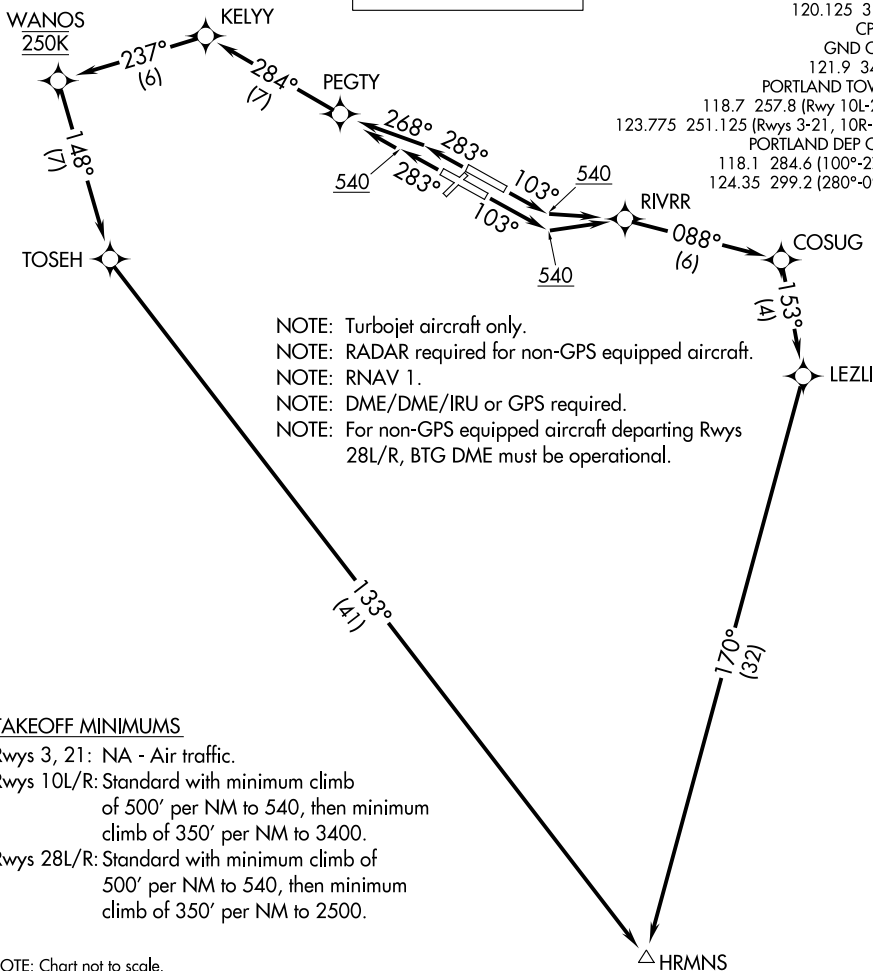


**TOP ALTITUDE:  
ASSIGNED BY ATC**

D-ATIS  
128.35 269.9  
CLNC DEL  
120.125 318.1  
CPDLC  
GND CON  
121.9 348.6  
PORTLAND TOWER  
118.7 257.8 (Rwy 10L-28R)  
123.775 251.125 (Rwys 3-21, 10R-28L)  
PORTLAND DEP CON  
118.1 284.6 (100°-279°)  
124.35 299.2 (280°-099°)



- NOTE: Turbojet aircraft only.
- NOTE: RADAR required for non-GPS equipped aircraft.
- NOTE: RNAV 1.
- NOTE: DME/DME/IRU or GPS required.
- NOTE: For non-GPS equipped aircraft departing Rwys 28L/R, BTG DME must be operational.

TAKEOFF MINIMUMS

Rwys 3, 21: NA - Air traffic.

Rwys 10L/R: Standard with minimum climb of 500' per NM to 540, then minimum climb of 350' per NM to 3400.

Rwys 28L/R: Standard with minimum climb of 500' per NM to 540, then minimum climb of 350' per NM to 2500.

NOTE: Chart not to scale.

**DEPARTURE ROUTE DESCRIPTION**

TAKEOFF RUNWAYS 10L/R: Climb heading 103° to 540, then direct to RIVRR, then on depicted route to HRMNS, thence. . . .

TAKEOFF RUNWAY 28L: Climb heading 283° to 540, then direct PEGTY, then on depicted route to HRMNS, thence. . . .

TAKEOFF RUNWAY 28R: Climb heading 283°, intercept course 268° to PEGTY, then on depicted route to HRMNS, thence. . . .

. . . .maintain assigned altitude, expect filed altitude 10 minutes after departure.

NW-1, 11 JUL 2024 to 08 AUG 2024

NW-1, 11 JUL 2024 to 08 AUG 2024