

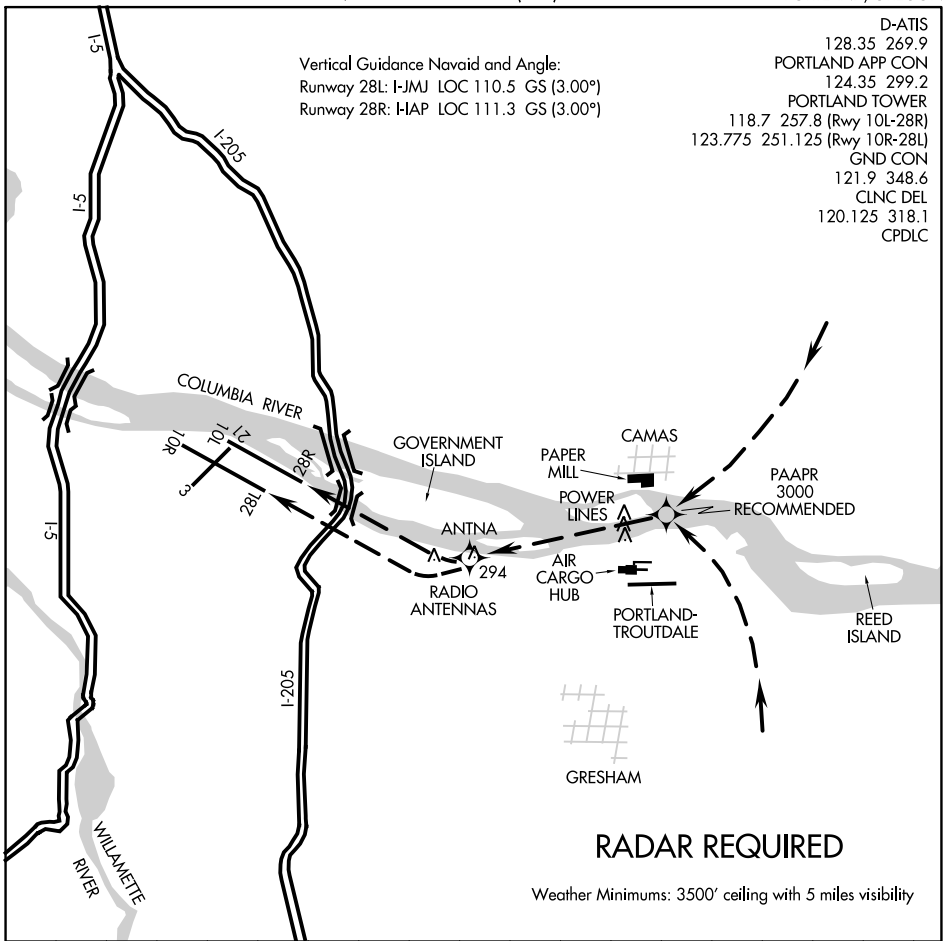
MILL VISUAL RWY 28L/R

AL-330 (FAA)

PORTLAND INTL (PDX)
PORTLAND, OREGON

Vertical Guidance Navaid and Angle:
Runway 28L: I-JMJ LOC 110.5 GS (3.00°)
Runway 28R: I-IAP LOC 111.3 GS (3.00°)

D-ATIS
128.35 269.9
PORTLAND APP CON
124.35 299.2
PORTLAND TOWER
118.7 257.8 (Rwy 10L-28R)
123.775 251.125 (Rwy 10R-28L)
GND CON
121.9 348.6
CLNC DEL
120.125 318.1
CPDLC



NW-1, 11 JUL 2024 to 08 AUG 2024

NW-1, 11 JUL 2024 to 08 AUG 2024

RADAR REQUIRED

Weather Minimums: 3500' ceiling with 5 miles visibility

1 2 3 4 5 6 7 8 9 10 11 12 13 14 15 16 17 18

MILL VISUAL RWY 28L/R PROCEDURE NOT AUTHORIZED AT NIGHT

Aircraft cleared for the Mill Visual Approach should proceed over the Columbia River between the Paper Mill and the Air Cargo Hub, then via the depicted route to intercept the final approach course for the assigned runway.

MILL VISUAL RWY 28L/R

Amdt 2 02MAY13

45°35'N-122°36'W

PORTLAND, OREGON
PORTLAND INTL (PDX)