

(MINNE5.MINNE) 17341

MINNE FIVE DEPARTURE (RNAV)

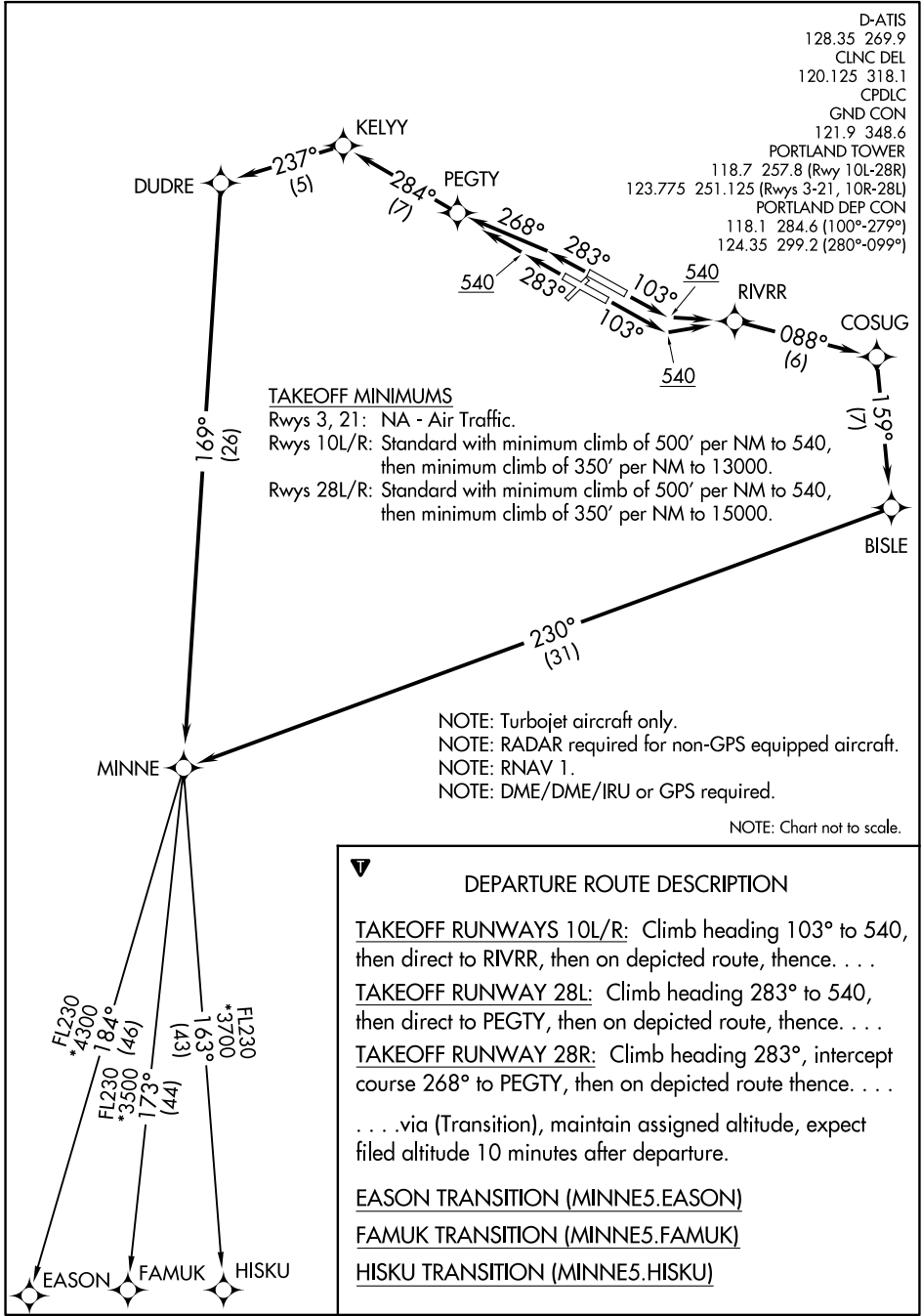
AL-330 (FAA)

PORTLAND INTL (PDX)

PORTLAND, OREGON

NW-1, 11 JUL 2024 to 08 AUG 2024

NW-1, 11 JUL 2024 to 08 AUG 2024



D-ATIS
128.35 269.9
CLNC DEL
120.125 318.1
CPDLC
GND CON
121.9 348.6
PORTLAND TOWER
118.7 257.8 (Rwy 10L-28R)
123.775 251.125 (Rwys 3-21, 10R-28L)
PORTLAND DEP CON
118.1 284.6 (100°-279°)
124.35 299.2 (280°-099°)

TAKEOFF MINIMUMS

Rwys 3, 21: NA - Air Traffic.
Rwys 10L/R: Standard with minimum climb of 500' per NM to 540, then minimum climb of 350' per NM to 13000.
Rwys 28L/R: Standard with minimum climb of 500' per NM to 540, then minimum climb of 350' per NM to 15000.

NOTE: Turbojet aircraft only.
NOTE: RADAR required for non-GPS equipped aircraft.
NOTE: RNAV 1.
NOTE: DME/DME/IRU or GPS required.

NOTE: Chart not to scale.

DEPARTURE ROUTE DESCRIPTION

TAKEOFF RUNWAYS 10L/R: Climb heading 103° to 540, then direct to RIVRR, then on depicted route, thence. . .

TAKEOFF RUNWAY 28L: Climb heading 283° to 540, then direct to PEGTY, then on depicted route, thence. . .

TAKEOFF RUNWAY 28R: Climb heading 283°, intercept course 268° to PEGTY, then on depicted route thence. . .

. . . via (Transition), maintain assigned altitude, expect filed altitude 10 minutes after departure.

EASON TRANSITION (MINNE5.EASON)

FAMUK TRANSITION (MINNE5.FAMUK)

HISKU TRANSITION (MINNE5.HISKU)

MINNE FIVE DEPARTURE (RNAV)

(MINNE5.MINNE) 08JAN15

PORTLAND, OREGON
PORTLAND INTL (PDX)