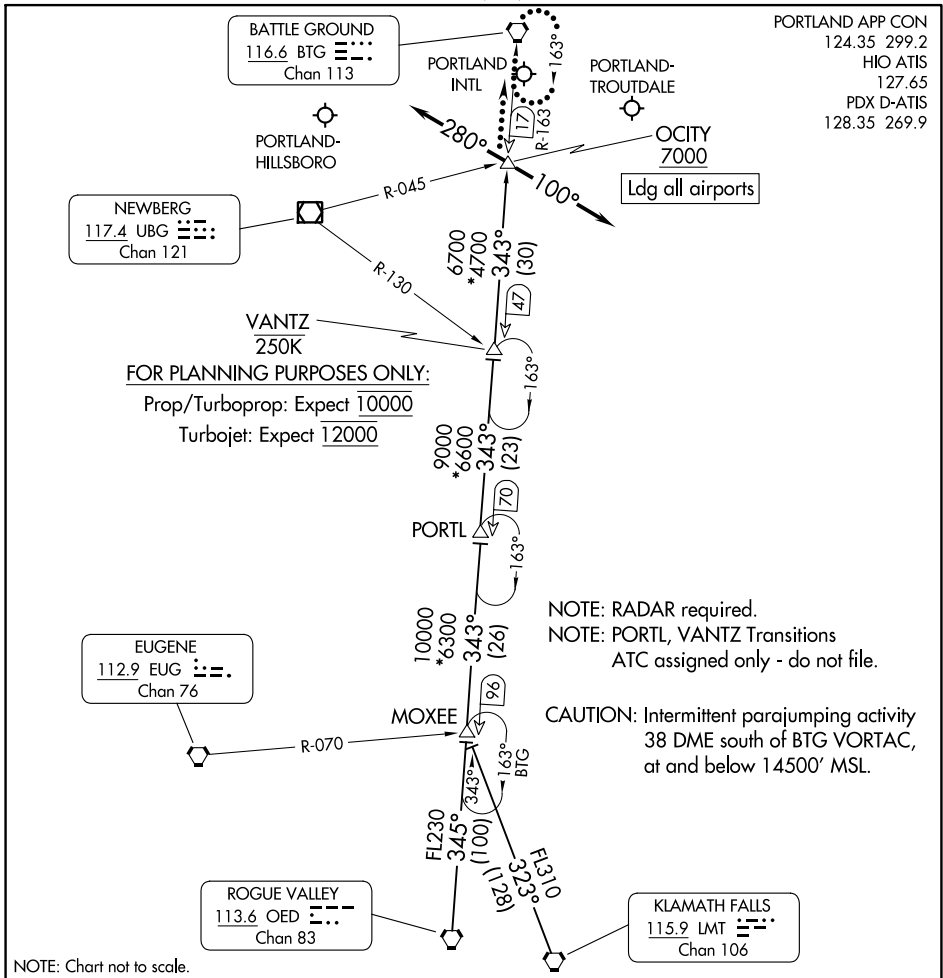


# OCITY THREE ARRIVAL



NW-1, 11 JUL 2024 to 08 AUG 2024

NW-1, 11 JUL 2024 to 08 AUG 2024

## ARRIVAL ROUTE DESCRIPTION

**KLAMATH FALLS TRANSITION (LMT.OCITY3):** From over LMT VORTAC on LMT R-323 to MOXEE, then on BTG R-163 to OCITY. Thence. . .

**MOXEE TRANSITION (MOXEE.OCITY3):** From over MOXEE on BTG R-163 to OCITY. Thence. . .

**ROGUE VALLEY TRANSITION (OED.OCITY3):** From over OED VORTAC on OED R-345 to MOXEE, then on BTG R-163 to OCITY. Thence. . .

**PORTL TRANSITION (PORTL.OCITY3):** From over PORTL on BTG R -163 to OCITY. Thence. . .

**VANTZ TRANSITION (VANTZ.OCITY3):** From over VANTZ on BTG R-163 to OCITY. Thence. . .

**LANDING EAST:** From OCITY heading 280°, expect RADAR vectors to final approach course.

**LANDING WEST:** From OCITY heading 100°, expect RADAR vectors to final approach course.

**LOST COMMUNICATIONS:** After OCITY, proceed direct BTG VORTAC and hold.

# OCITY THREE ARRIVAL