


APP CRS	Rwy Idg	8535
103°	TDZE	30
	Apt Elev	31

RNAV (RNP) Z RWY 10L

PORTLAND INTL (PDX)

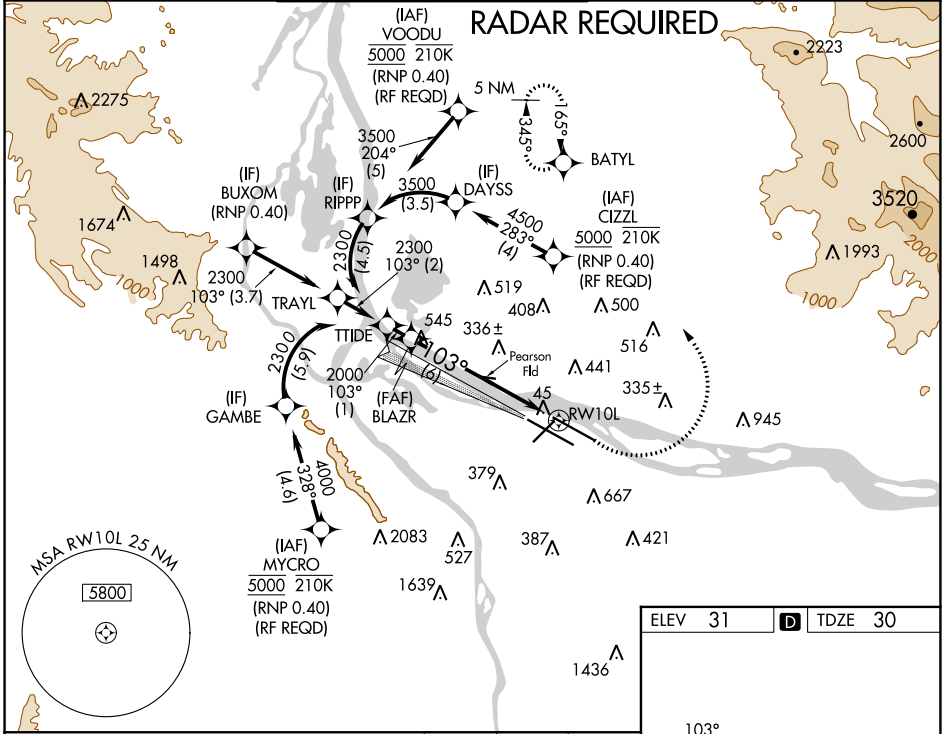
GPS required. For inop MALSR, increase RNP 0.30 all Cats visibility to RVR 5500. For uncompensated Baro-VNAV systems, procedure NA below -6°C (22°F) or above 54°C (130°F). Simultaneous approach authorized with Rwy 10R, except for arrivals at CIZLZ, VOODOU, and MYCRO. Use of FD or AP providing RNAV track guidance required for simultaneous operations.

MALSR



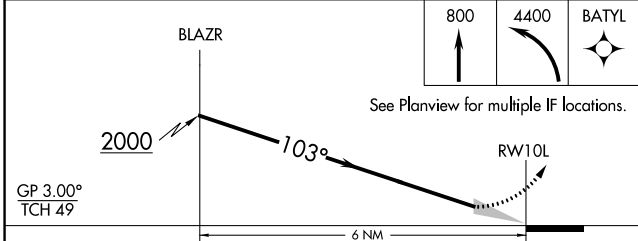
MISSED APPROACH: Climb to 800 then climbing left turn to 4400 direct BATYL and hold, continue climb-in-hold to 4400.

D-ATIS	PORTLAND APP CON	PORTLAND TOWER	GND CON	CLNC DEL	CPDLC
128.35	124.35 299.2	Rwy 10L-28R 118.7 257.8	Rwys 3-21, 10R-28L 123.775 251.125	120.125 318.1	
269.9			121.9 348.6		



NW-1, 11 JUL 2024 to 08 AUG 2024

NW-1, 11 JUL 2024 to 08 AUG 2024



CATEGORY	A	B	C	D
RNP 0.30 DA		365/32	335 (400- $\frac{2}{3}$)	
AUTHORIZATION REQUIRED				

ELEV 31	TDZE 30
---------	---------

REIL Rwys 3 and 21
TDZ/CL Rwy 10R
MIRL Rwy 3-21
HIRL Rwys 10L-28R and 10R-28L