

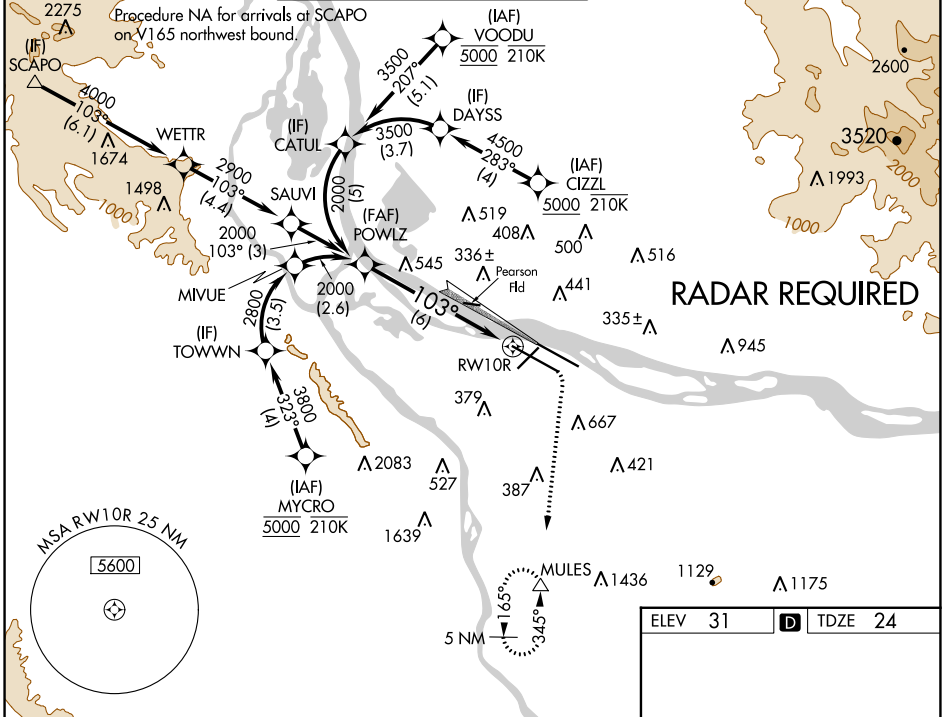
APP CRS	Rwy Idg	11000
103°	TDZE	24
	Apt Elev	31

RNAV (RNP) Z RWY 10R

PORTLAND INTL (PDX)

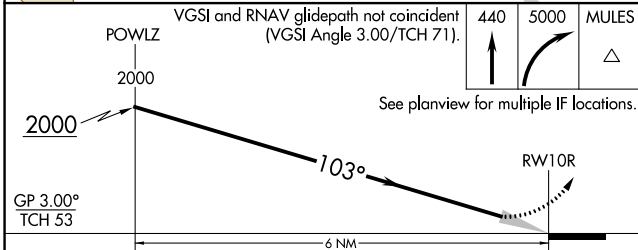
RNP AR APCH - GPS.		ALSF-2	MISSED APPROACH: Climb to 440 then climbing right turn to 5000 direct MULES and hold, continue climb-in-hold to 5000.
<p>Simultaneous approach authorized. For uncompensated Baro-VNAV systems, procedure NA below -15°C or above 54°C. For inop ALS, increase RNP 0.10 all Cats visibility to RVR 5500.</p>			

D-ATIS	PORTLAND APP CON	PORTLAND TOWER	GND CON	CLNC DEL	CPDLC
128.35	124.35 299.2	Rwy 10L-28R 118.7 257.8	Rwys 3-21, 10R-28L 123.775 251.125	121.9 348.6	120.125 318.1
269.9					



NW-1, 11 JUL 2024 to 08 AUG 2024

NW-1, 11 JUL 2024 to 08 AUG 2024



ELEV	31	D	TDZE	24
------	----	---	------	----

CATEGORY	A	B	C	D
RNP 0.10 DA		370/30	346 (400-3/4)	
RNP 0.30 DA		449/40	425 (500-3/4)	

AUTHORIZATION REQUIRED

