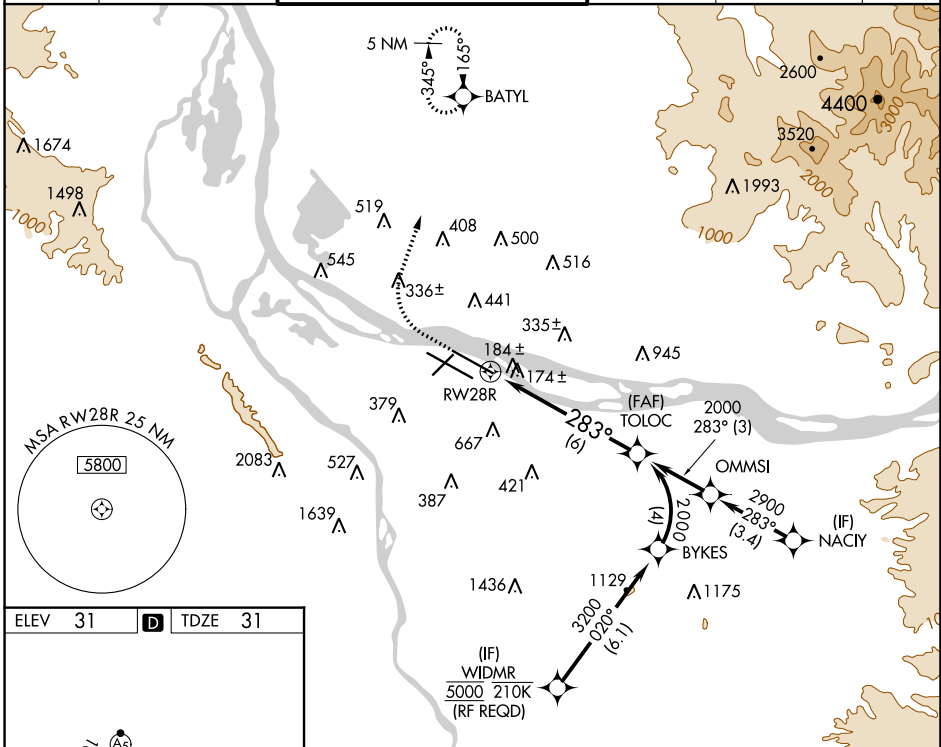


APP CRS	Rwy Idg	9290
283°	TDZE	31
	Apt Elev	31

RNAV (RNP) Z RWY 28R

PORTLAND INTL (PDX)

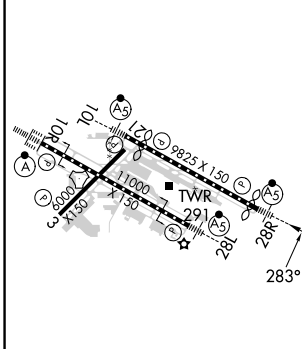
RNP AR APCH.		MALSR		MISSED APPROACH: Climb to 600 then climbing right turn to 4400 direct BATYL and hold, continue climb-in-hold to 4400.		
Use of FD or AP providing RNAV track guidance required during simultaneous operations. Simultaneous approach authorized with Rwy 28L RADAR required. For uncompensated Baro-VNAV systems, procedure NA below -6°C or above 54°C. For inop ALS increase RNP 0.20 all Cats visibility to 1 1/4 SM, and increase RNP 0.30 all Cats visibility to 1 1/2 SM.						
D-ATIS 128.35 269.9	PORTLAND APP CON 124.35 299.2	PORTLAND TOWER Rwy 10L-28R 118.7 257.8	Rwys 3-21, 10R-28L 123.775 251.125	GND CON 121.9 348.6	CLNC DEL 120.125 318.1	CPDLC



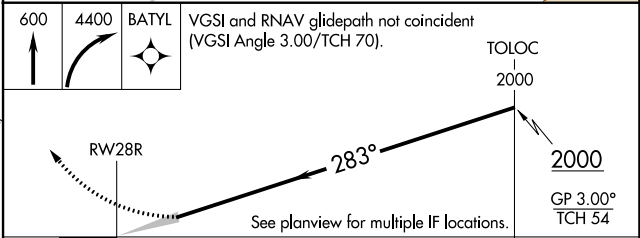
NW-1, 11 JUL 2024 to 08 AUG 2024

NW-1, 11 JUL 2024 to 08 AUG 2024

ELEV	31	D	TDZE	31
------	-----------	----------	------	-----------



REIL Rwys 3 and 21
 TDZ/CL Rwy 10R
 MIRL Rwy 3-21
 HIRL Rwys 10L-28R and 10R-28L



CATEGORY	A	B	C	D
RNP 0.20 DA	417/40	386 (400-3/4)	417/50	386 (400-1)
RNP 0.30 DA	471/50		440 (500-1)	

AUTHORIZATION REQUIRED